



SZABO SCANDIC

Part of Europa Biosite

Produktinformation



Forschungsprodukte & Biochemikalien



Zellkultur & Verbrauchsmaterial



Diagnostik & molekulare Diagnostik



Laborgeräte & Service

Weitere Information auf den folgenden Seiten!
See the following pages for more information!



Lieferung & Zahlungsart

siehe unsere [Liefer- und Versandbedingungen](#)

Zuschläge

- Mindermengenzuschlag
- Trockeneiszuschlag
- Gefahrgutzuschlag
- Expressversand

SZABO-SCANDIC HandelsgmbH

Quellenstraße 110, A-1100 Wien

T. +43(0)1 489 3961-0

F. +43(0)1 489 3961-7

mail@szabo-scandic.com

www.szabo-scandic.com

[linkedin.com/company/szaboscandic](https://www.linkedin.com/company/szaboscandic) 



UK Office

Everest Biotech Ltd

Cherwell Innovation Centre
77 Heyford Park
Upper Heyford
Oxfordshire
OX25 5HD
UK

Enquiries:

info@everestbiotech.com

Sales:

sales@everestbiotech.com

Tech support:

support@everestbiotech.com

Tel: +44 (0)1869 238326

Fax: +44 (0)1869 238327

US Office

Everest Biotech c/o Abcore

405 Maple Street, Suite A106
Ramona,
CA 92065
USA

Inquiries:

info@everestbiotech.com

Sales:

usasales@everestbiotech.com

Tech support:

support@everestbiotech.com

Tel: 888-320-4628 (toll-free)

Fax: 888-841-9041

www.everestbiotech.com

**Research Use Only. Not for
diagnostic or therapeutic use.**

EB09092 - Goat Anti-FTL Antibody

Size: 100µg specific antibody in 200µl



Target Protein

Principal Names: FTL, ferritin, light polypeptide, MGC71996, L apoferritin, ferritin L subunit, ferritin L-chain, ferritin light chain, ferritin light polypeptide-like 3, LFTD, NBIA3

Official Symbol: FTL

Accession Number(s): NP_000137.2

Human GeneID(s): [2512](#)

Non-Human GeneID(s): 14325 (mouse), 29292 (rat)

Immunogen

Peptide with sequence C-GEYLFERLTLKHD, from the C Terminus of the protein sequence according to NP_000137.2.

Please note the [peptide](#) is available for sale.

Purification and Storage

Purified from goat serum by ammonium sulphate precipitation followed by antigen affinity chromatography using the immunizing peptide.

Supplied at 0.5 mg/ml in Tris saline, 0.02% sodium azide, pH7.3 with 0.5% bovine serum albumin.

Aliquot and store at -20°C. Minimize freezing and thawing.

Applications Tested

Peptide ELISA: antibody detection limit dilution 1:32000.

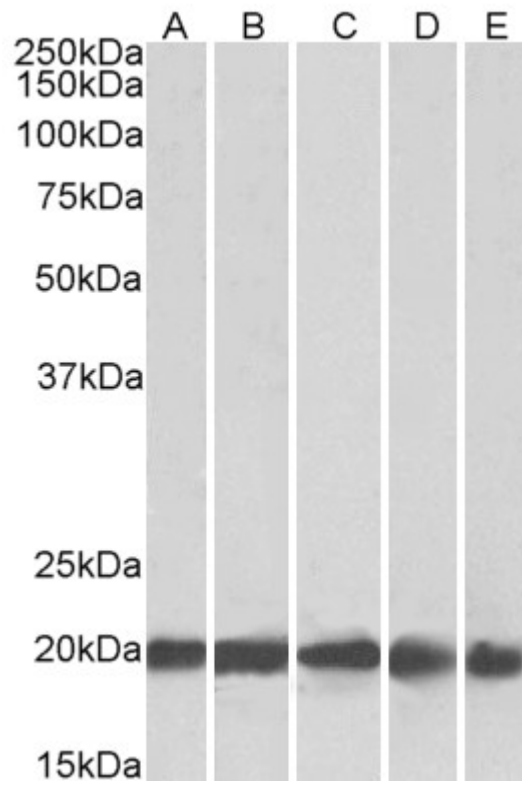
Western blot: Approx. 20kDa band observed in Human Brain (Cerebellum), Liver, Placenta and 22kDa in Mouse and Rat Brain lysates (calculated MW of 20.0kDa according to NP_000137.2). Recommended concentration: 0.3-1.0µg/ml. Primary incubation was 1 hour.

IHC: Paraffin embedded Human Spleen. Recommended concentration: 4-6µg/ml.

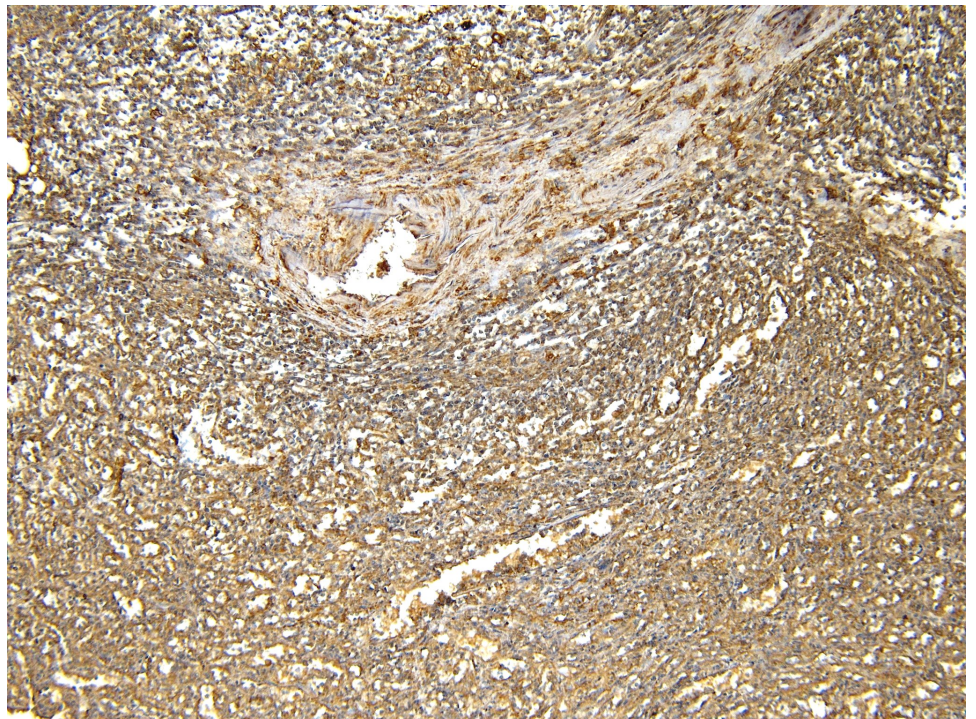
Species Reactivity

Tested: Human, Mouse, Rat

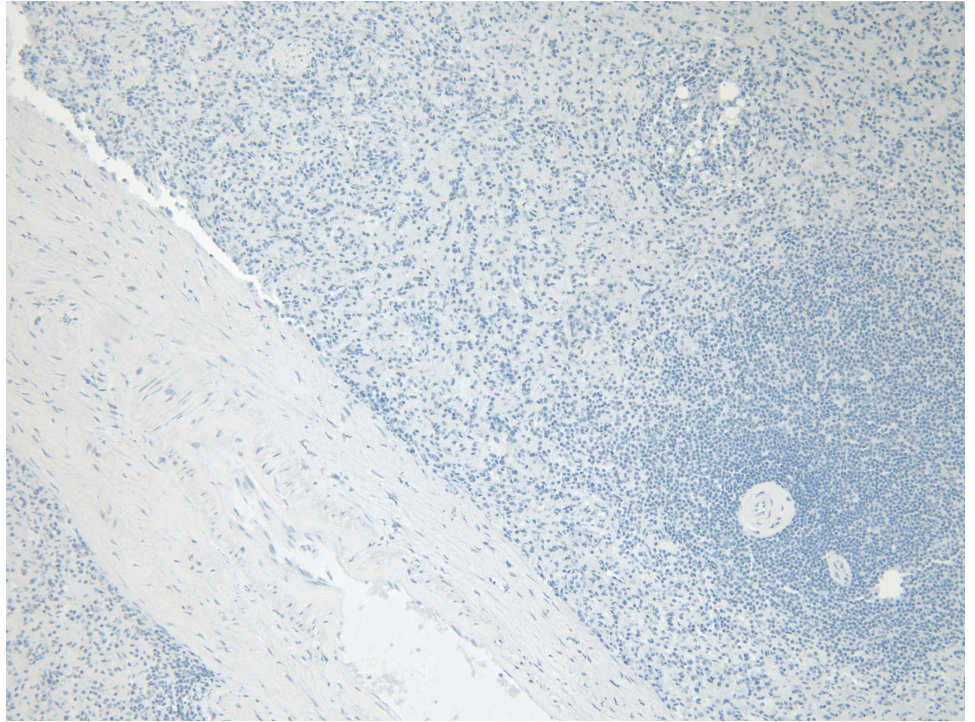
Expected from sequence similarity: Human, Mouse, Rat, Dog, Cow



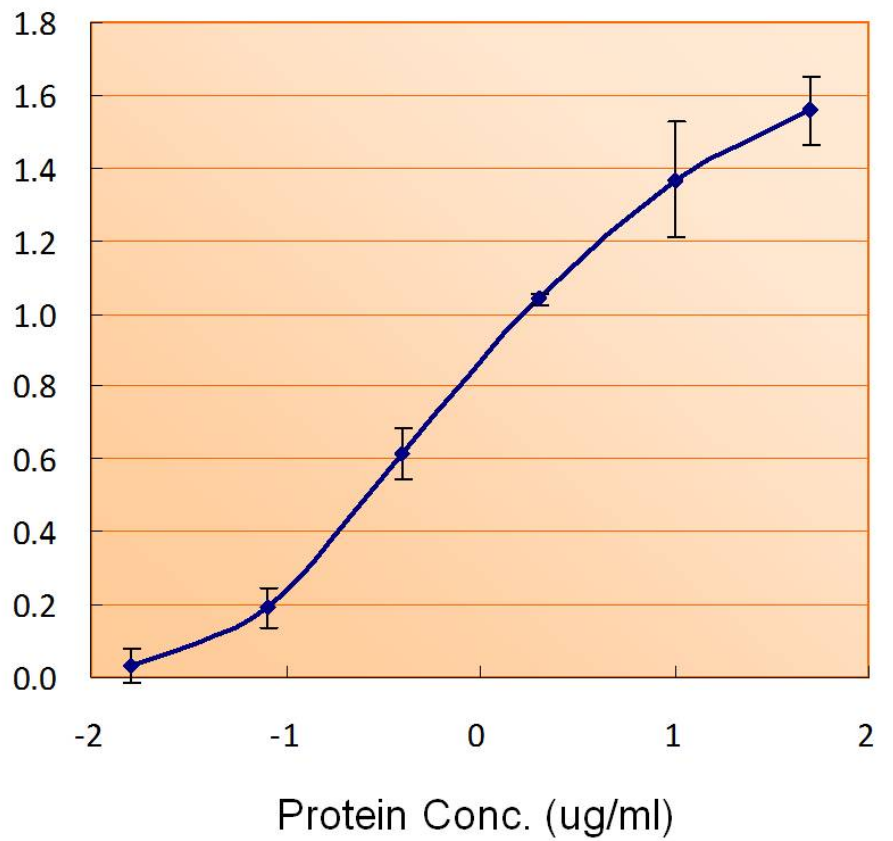
EB09092 (0.3 μ g/ml) staining of Human Brain (Cerebellum) (A), Liver (B), Human Placenta (C) 22kDa in Mouse Brain (D), Rat Brain lysate (35 μ g protein in RIPA buffer). Detected by chemiluminescence.



EB09092 (4 μ g/ml) staining of paraffin embedded Human Spleen. Heat induced antigen retrieval with citrate buffer pH 6, HRP-staining.



EB09092 Negative Control showing staining of paraffin embedded Human Spleen, with no primary antibody.



EB09092 (1.5ug/ml) as the reporter with EB002025 as the capture rabbit antibody (5ug/ml). **This data is from a previous batch, not on sale.**