



# SZABO SCANDIC

Part of Europa Biosite

## Produktinformation



Forschungsprodukte & Biochemikalien



Zellkultur & Verbrauchsmaterial



Diagnostik & molekulare Diagnostik



Laborgeräte & Service

Weitere Information auf den folgenden Seiten!  
See the following pages for more information!



### Lieferung & Zahlungsart

siehe unsere [Liefer- und Versandbedingungen](#)

### Zuschläge

- Mindermengenzuschlag
- Trockeneiszuschlag
- Gefahrgutzuschlag
- Expressversand

### SZABO-SCANDIC HandelsgmbH

Quellenstraße 110, A-1100 Wien

T. +43(0)1 489 3961-0

F. +43(0)1 489 3961-7

[mail@szabo-scandic.com](mailto:mail@szabo-scandic.com)

[www.szabo-scandic.com](http://www.szabo-scandic.com)

[linkedin.com/company/szaboscandic](https://www.linkedin.com/company/szaboscandic) 



## UK Office

### Everest Biotech Ltd

Cherwell Innovation Centre  
77 Heyford Park  
Upper Heyford  
Oxfordshire  
OX25 5HD  
UK

Enquiries:

[info@everestbiotech.com](mailto:info@everestbiotech.com)

Sales:

[sales@everestbiotech.com](mailto:sales@everestbiotech.com)

Tech support:

[support@everestbiotech.com](mailto:support@everestbiotech.com)

Tel: +44 (0)1869 238326

Fax: +44 (0)1869 238327

## US Office

### Everest Biotech c/o Abcore

405 Maple Street, Suite A106  
Ramona,  
CA 92065  
USA

Inquiries:

[info@everestbiotech.com](mailto:info@everestbiotech.com)

Sales:

[usasales@everestbiotech.com](mailto:usasales@everestbiotech.com)

Tech support:

[support@everestbiotech.com](mailto:support@everestbiotech.com)

Tel: 888-320-4628 (toll-free)

Fax: 888-841-9041

[www.everestbiotech.com](http://www.everestbiotech.com)

**Research Use Only. Not for  
diagnostic or therapeutic use.**

## EB09143 - Goat Anti-SLC12A1 / NKCC Antibody

Size: 100µg specific antibody in 200µl



### Target Protein

**Principal Names:** SLC12A1, solute carrier family 12 (sodium/potassium/chloride transporters), member 1, BSC1, MGC48843, NKCC2, NKCC2A variant A, Na-K-2Cl cotransporter, sodium potassium chloride cotransporter 2

**Official Symbol:** SLC12A1

**Accession Number(s):** NP\_000329.2

**Human GeneID(s):** [6557](#)

### Immunogen

Peptide with sequence C-PHYEETSFGDEAQKR, from the internal region of the protein sequence according to NP\_000329.2.

Please note the [peptide](#) is available for sale.

### Purification and Storage

Purified from goat serum by ammonium sulphate precipitation followed by antigen affinity chromatography using the immunizing peptide.

Supplied at 0.5 mg/ml in Tris saline, 0.02% sodium azide, pH7.3 with 0.5% bovine serum albumin.

Aliquot and store at -20°C. Minimize freezing and thawing.

### Applications Tested

**Peptide ELISA:** antibody detection limit dilution 1:32000.

**Western blot:** This antibody has been successfully used in WB on Mouse: Alshahrani S et al. (2015) PMID: 26400961.

**IHC:** In paraffin embedded Human Kidney shows strong membrane staining in some CT cells. Recommended concentration, 3-6µg/ml.

**IF/ICC:** This antibody has been successfully used in IF on Mouse: Alshahrani S et al. (2015) PMID: 26400961. This antibody has been successfully used in ICC on Pig: Andreas Brännström et al. (2022) PMID: 36471055.

### Species Reactivity

**Tested:** Human, Mouse, Pig

**Expected from sequence similarity:** Human

### Specific References

**This antibody has been successfully used in ICC on Pig:**

Andreas Brännström, Michael Hultström, Jenny Gustavsson, Zabih Aurfan & Mattias Günther

Intermittent thoracic resuscitative endovascular balloon occlusion of the aorta improves renal function compared to 60 min continuous application after porcine class III hemorrhage.

Eur J Trauma Emerg Surg (2022). <https://doi.org/10.1007/s00068-022-02189-2>  
PMID: 36471055

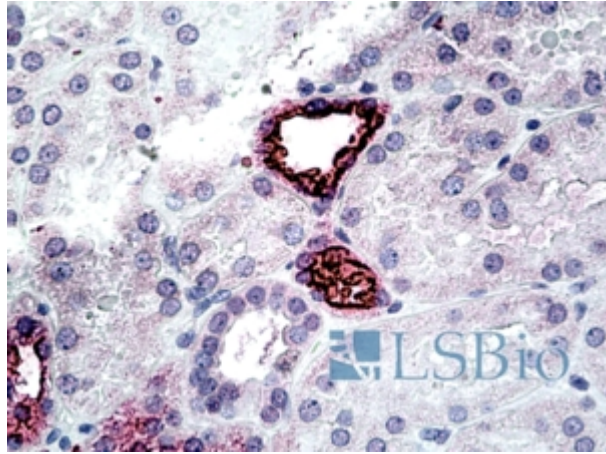
**This antibody has been successfully used in WB and IF in Mouse:**

Alshahrani S, Almutairi MM, Kursan S, Dias-Junior E, Almiahub MM, Aguilar-Bryan L, Di Fulvio M.

Increased Slc12a1 expression in  $\beta$ -cells

and improved glucose disposal in Slc12a2 heterozygous mice.

J Endocrinol. 2015 Dec;227(3):153-65.  
PMID: 26400961



EB09143 (3.8ug/ml) staining of paraffin embedded Human Kidney. Steamed antigen retrieval with citrate buffer pH 6, AP-staining.