



SZABO SCANDIC

Part of Europa Biosite

Produktinformation



Forschungsprodukte & Biochemikalien



Zellkultur & Verbrauchsmaterial



Diagnostik & molekulare Diagnostik



Laborgeräte & Service

Weitere Information auf den folgenden Seiten!
See the following pages for more information!



Lieferung & Zahlungsart

siehe unsere [Liefer- und Versandbedingungen](#)

Zuschläge

- Mindermengenzuschlag
- Trockeneiszuschlag
- Gefahrgutzuschlag
- Expressversand

SZABO-SCANDIC HandelsgmbH

Quellenstraße 110, A-1100 Wien

T. +43(0)1 489 3961-0

F. +43(0)1 489 3961-7

mail@szabo-scandic.com

www.szabo-scandic.com

[linkedin.com/company/szaboscandic](https://www.linkedin.com/company/szaboscandic) 



UK Office

Everest Biotech Ltd

Cherwell Innovation Centre
77 Heyford Park
Upper Heyford
Oxfordshire
OX25 5HD
UK

Enquiries:

info@everestbiotech.com

Sales:

sales@everestbiotech.com

Tech support:

support@everestbiotech.com

Tel: +44 (0)1869 238326

Fax: +44 (0)1869 238327

US Office

Everest Biotech c/o Abcore

405 Maple Street, Suite A106
Ramona,
CA 92065
USA

Inquiries:

info@everestbiotech.com

Sales:

usasales@everestbiotech.com

Tech support:

support@everestbiotech.com

Tel: 888-320-4628 (toll-free)

Fax: 888-841-9041

www.everestbiotech.com

**Research Use Only. Not for
diagnostic or therapeutic use.**

EB09214 - Goat Anti-KCNQ1 Antibody

Size: 100µg specific antibody in 200µl



Target Protein

Principal Names: KCNQ1, potassium voltage-gated channel, KQT-like subfamily, member 1, ATFB1, FLJ26167, JLNS1, KCNA8, KCNA9, KVLQT1, Kv1.9, Kv7.1, LQT, LQT1, RWS, SQT2, WRS, Jervell and Lange-Nielsen syndrome 1, kidney and cardiac voltage dependend K+ channel, long (electrocardiographic) QT syndrome, Ward-Romano syndrome 1, slow delayed rectifier channel subunit

Official Symbol: KCNQ1

Accession Number(s): NP_000209.2; NP_861463.1

Human GeneID(s): [3784](#)

Non-Human GeneID(s): 16535 (mouse), 84020 (rat)

Important Comments: This antibody is expected to recognize both reported isoforms (NP_000209.2; NP_861463.1).

Immunogen

Peptide with sequence C-EQLTVPRRGPEGS, from the C Terminus of the protein sequence according to NP_000209.2; NP_861463.1.

Please note the [peptide](#) is available for sale.

Purification and Storage

Purified from goat serum by ammonium sulphate precipitation followed by antigen affinity chromatography using the immunizing peptide.

Supplied at 0.5 mg/ml in Tris saline, 0.02% sodium azide, pH7.3 with 0.5% bovine serum albumin.

Aliquot and store at -20°C. Minimize freezing and thawing.

Applications Tested

Peptide ELISA: antibody detection limit dilution 1:16000.

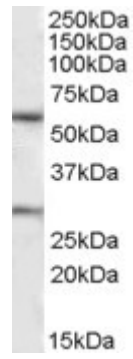
Western blot: Approx. 60kDa band observed in Human Heart lysates (calculated MW of 61.5kDa according to NP_861463.1). Recommended concentration: 1-3µg/ml. An additional band of unknown identity was also consistently observed at 28kDa. This band was successfully blocked by incubation with the immunizing peptide. Primary incubation was 1 hour.

IHC: Paraffin embedded Rat Liver. Recommended concentration: 6-8µg/ml.

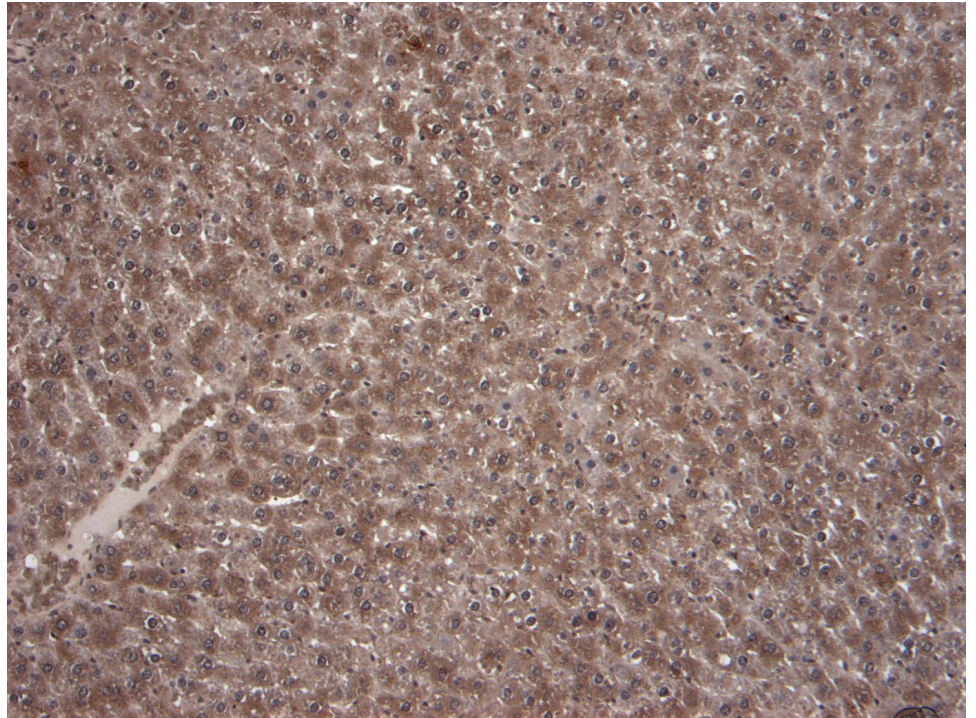
Species Reactivity

Tested: Human, Rat

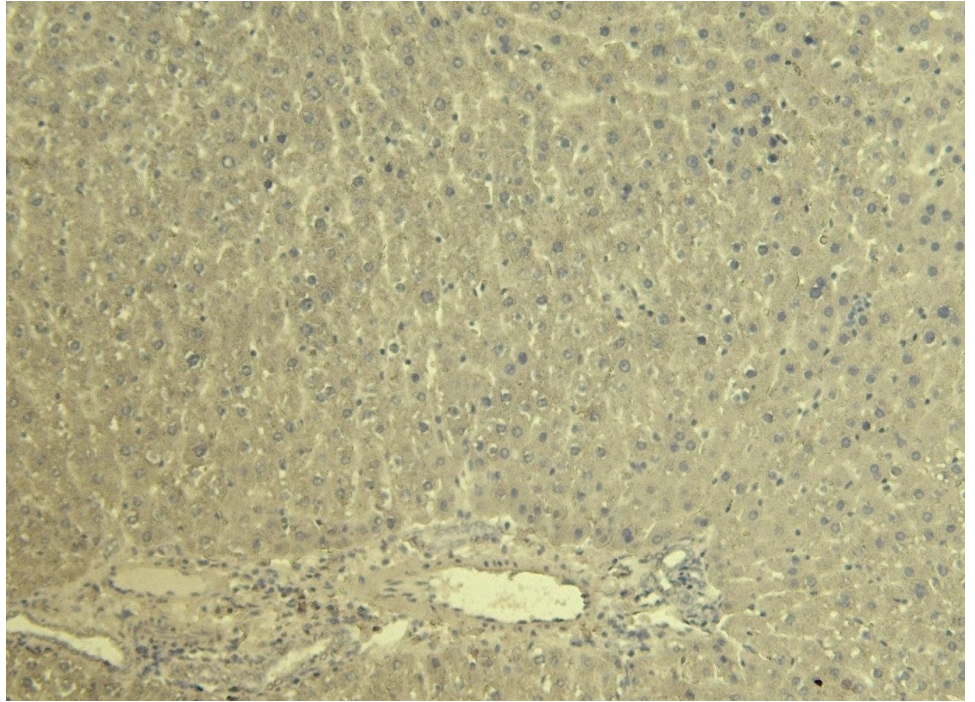
Expected from sequence similarity: Human, Mouse, Rat, Dog, Cow



EB09214 (1 μ g/ml) staining of Human Heart lysate (35 μ g protein in RIPA buffer). Detected by chemiluminescence.



EB09214 (8 μ g/ml) staining of paraffin embedded Rat Liver. Heat induced antigen retrieval with citrate buffer Ph 6, HRP-staining.



EB09214 Negative Control showing staining of paraffin embedded Rat Liver, with no primary antibody.