



SZABO SCANDIC

Part of Europa Biosite

Produktinformation



Forschungsprodukte & Biochemikalien



Zellkultur & Verbrauchsmaterial



Diagnostik & molekulare Diagnostik



Laborgeräte & Service

Weitere Information auf den folgenden Seiten!
See the following pages for more information!



Lieferung & Zahlungsart

siehe unsere [Liefer- und Versandbedingungen](#)

Zuschläge

- Mindermengenzuschlag
- Trockeneiszuschlag
- Gefahrgutzuschlag
- Expressversand

SZABO-SCANDIC HandelsgmbH

Quellenstraße 110, A-1100 Wien

T. +43(0)1 489 3961-0

F. +43(0)1 489 3961-7

mail@szabo-scandic.com

www.szabo-scandic.com

[linkedin.com/company/szaboscandic](https://www.linkedin.com/company/szaboscandic) 



UK Office

Everest Biotech Ltd

Cherwell Innovation Centre
77 Heyford Park
Upper Heyford
Oxfordshire
OX25 5HD
UK

Enquiries:

info@everestbiotech.com

Sales:

sales@everestbiotech.com

Tech support:

support@everestbiotech.com

Tel: +44 (0)1869 238326

Fax: +44 (0)1869 238327

US Office

Everest Biotech c/o Abcore

405 Maple Street, Suite A106
Ramona,
CA 92065
USA

Inquiries:

info@everestbiotech.com

Sales:

usasales@everestbiotech.com

Tech support:

support@everestbiotech.com

Tel: 888-320-4628 (toll-free)

Fax: 888-841-9041

www.everestbiotech.com

**Research Use Only. Not for
diagnostic or therapeutic use.**

EB09218 - Goat Anti-UNC5C Antibody

Size: 100µg specific antibody in 200µl



Target Protein

Principal Names: UNC5C, unc-5 homolog C (C. elegans), UNC5H3, homolog of C. elegans transmembrane receptor Unc5, unc5 (C.elegans homolog) c, unc5C

Official Symbol: UNC5C

Accession Number(s): NP_003719.2

Human GeneID(s): [8633](#)

Non-Human GeneID(s): 22253 (mouse)

Immunogen

Peptide with sequence NCTVSEEPTGID, from the internal region of the protein sequence according to NP_003719.2.

Please note the [peptide](#) is available for sale.

Purification and Storage

Purified from goat serum by ammonium sulphate precipitation followed by antigen affinity chromatography using the immunizing peptide.

Supplied at 0.5 mg/ml in Tris saline, 0.02% sodium azide, pH7.3 with 0.5% bovine serum albumin.

Aliquot and store at -20°C. Minimize freezing and thawing.

Applications Tested

Peptide ELISA: antibody detection limit dilution 1:32000.

Western blot: Preliminary experiments in Human and Mouse Brain lysates gave no specific signal but low background (at antibody concentration up to 1µg/ml).

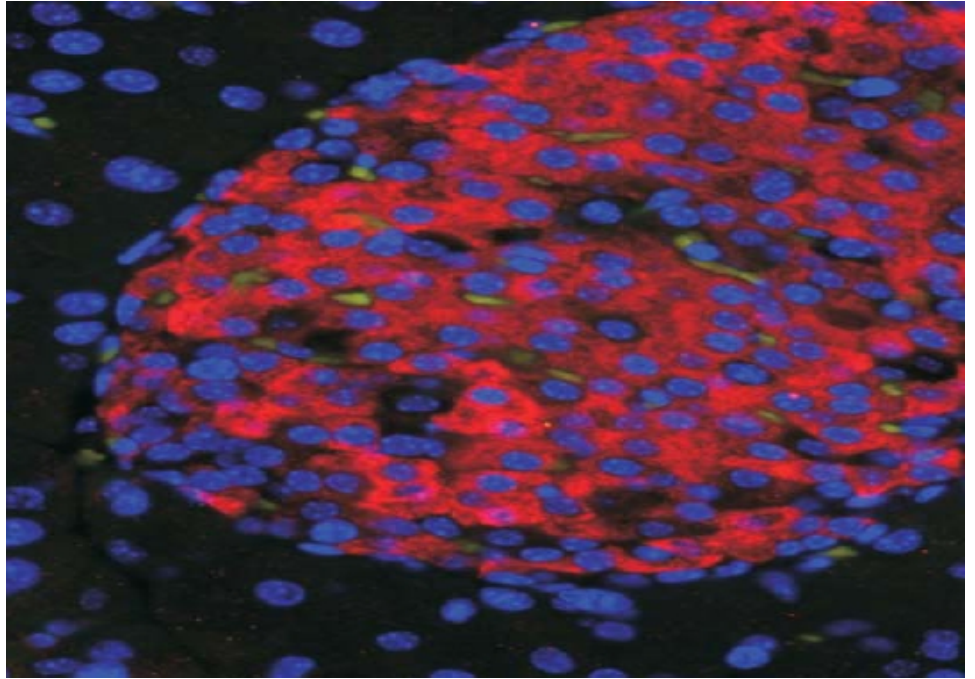
IHC: In paraffin embedded Human Cerebral Cortex shows staining of some neuronal bodies plus intense axonal staining. Recommended concentration: 3-5µg/ml.

Immunofluorescence: Staining of paraffin embedded endocrine islets (red) in adult Mouse Pancreas. Nuclear staining in blue and ductal cell staining in green. Data obtained from a customer.

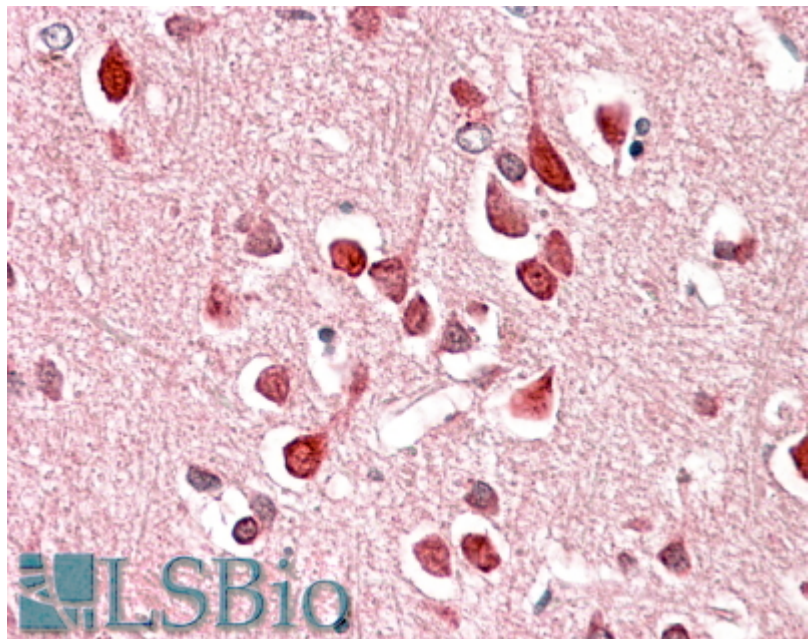
Species Reactivity

Tested: Human, Mouse

Expected from sequence similarity: Human, Mouse, Dog



EB09218 (50ug/ml) staining of islets in Mouse Pancreas. Citrate antigen retrieval. Detected by immunofluorescence.



EB09218 (3.8µg/ml) staining of paraffin embedded Human Cerebral Cortex. Steamed antigen retrieval with citrate buffer pH 6, AP-staining.