



SZABO SCANDIC

Part of Europa Biosite

Produktinformation



Forschungsprodukte & Biochemikalien



Zellkultur & Verbrauchsmaterial



Diagnostik & molekulare Diagnostik



Laborgeräte & Service

Weitere Information auf den folgenden Seiten!
See the following pages for more information!



Lieferung & Zahlungsart

siehe unsere [Liefer- und Versandbedingungen](#)

Zuschläge

- Mindermengenzuschlag
- Trockeneiszuschlag
- Gefahrgutzuschlag
- Expressversand

SZABO-SCANDIC HandelsgmbH

Quellenstraße 110, A-1100 Wien

T. +43(0)1 489 3961-0

F. +43(0)1 489 3961-7

mail@szabo-scandic.com

www.szabo-scandic.com

[linkedin.com/company/szaboscandic](https://www.linkedin.com/company/szaboscandic) 

UK Office

Everest Biotech Ltd

Cherwell Innovation Centre
77 Heyford Park
Upper Heyford
Oxfordshire
OX25 5HD
UK

Enquiries:

info@everestbiotech.com

Sales:

sales@everestbiotech.com

Tech support:

support@everestbiotech.com

Tel: +44 (0)1869 238326

Fax: +44 (0)1869 238327

US Office

Everest Biotech c/o Abcore

405 Maple Street, Suite A106
Ramona,
CA 92065
USA

Inquiries:

info@everestbiotech.com

Sales:

usasales@everestbiotech.com

Tech support:

support@everestbiotech.com

Tel: 888-320-4628 (toll-free)

Fax: 888-841-9041

www.everestbiotech.com

**Research Use Only. Not for
diagnostic or therapeutic use.**

EB09295 - Goat Anti-LIMP2 / SCARB2 Antibody

Size: 100µg specific antibody in 200µl



Target Protein

Principal Names: SCARB2, scavenger receptor class B, member 2, AMRF, CD36L2, HLGP85, LIMP2, SR-BII, 85 kDa lysosomal sialoglycoprotein scavenger receptor class B, member 2, CD36 antigen (collagen type I receptor, thrombospondin receptor)-like 2 (lysosomal integral membrane protein II), lysosomal integral membrane protein II, EPM4, LGP85, LIMP-2, 85 kDa lysosomal membrane sialoglycoprotein, CD36 antigen-like 2, LIMP II, scavenger receptor class B member 2

Official Symbol: SCARB2

Accession Number(s): NP_005497.1

Human GeneID(s): [950](#)

Non-Human GeneID(s): 12492 (mouse)

Important Comments: This antibody is expected to recognize reported isoform 1 (NP_005497.1) only.

Immunogen

Peptide with sequence C-NKANIQFGDNGTTIS, from the internal region of the protein sequence according to NP_005497.1.

Please note the [peptide](#) is available for sale.

Purification and Storage

Purified from goat serum by ammonium sulphate precipitation followed by antigen affinity chromatography using the immunizing peptide.

Supplied at 0.5 mg/ml in Tris saline, 0.02% sodium azide, pH7.3 with 0.5% bovine serum albumin.

Aliquot and store at -20°C. Minimize freezing and thawing.

Applications Tested

Peptide ELISA: antibody detection limit dilution 1:4000.

Western blot: Approx. 80kDa band observed in Human Brain (Cortex and Cerebellum) lysates (calculated MW of 54.3kDa according to NP_005497.1). The observed molecular weight corresponds to earlier findings in literature with different antibodies (Fujita et al, Biochem Biophys Res Commun. 1992 Apr 30;184(2):604-11.; PMID: 1374238).

Recommended concentration: 0.1-0.3µg/ml. Primary incubation was 1 hour. This antibody has been successfully used in WB on Human: Murphy KE et al. (2014) PMID: 24477431.

IHC: In paraffin embedded Human Cerebral Cortex shows lysosomal staining.

Recommended concentration, 3-5µg/ml.

Species Reactivity

Tested: Human

Expected from sequence similarity: Human, Mouse

Specific Reference

This antibody has been successfully used in Western blot on Human:

Murphy KE, Gysbers AM, Abbott SK, Tayebi N, Kim WS, Sidransky E, Cooper A, Garner B, Halliday GM.

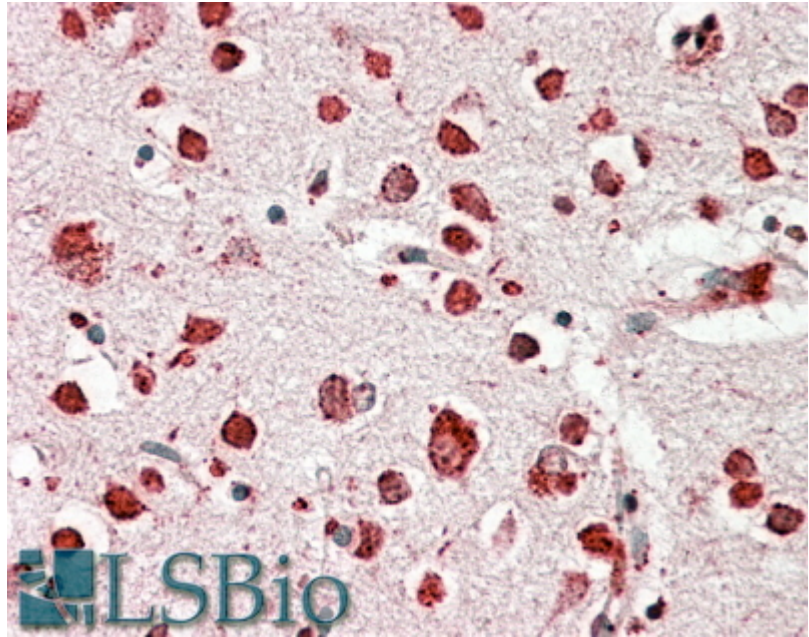
Reduced glucocerebrosidase is associated with increased α -synuclein in sporadic Parkinson's disease.

Brain. 2014 Mar;137(Pt 3):834-48.

PMID: 24477431



EB09295 (0.1 μ g/ml) staining of Human Cerebral Cortex lysate (35 μ g protein in RIPA buffer). Detected by chemiluminescence.



EB09295 (3.8 μ g/ml) staining of paraffin embedded Human Cerebral Cortex. Steamed antigen retrieval with citrate buffer pH 6, AP-staining.