



# SZABO SCANDIC

Part of Europa Biosite

## Produktinformation



Forschungsprodukte & Biochemikalien



Zellkultur & Verbrauchsmaterial



Diagnostik & molekulare Diagnostik



Laborgeräte & Service

Weitere Information auf den folgenden Seiten!  
See the following pages for more information!



### Lieferung & Zahlungsart

siehe unsere [Liefer- und Versandbedingungen](#)

### Zuschläge

- Mindermengenzuschlag
- Trockeneiszuschlag
- Gefahrgutzuschlag
- Expressversand

### SZABO-SCANDIC HandelsgmbH

Quellenstraße 110, A-1100 Wien

T. +43(0)1 489 3961-0

F. +43(0)1 489 3961-7

[mail@szabo-scandic.com](mailto:mail@szabo-scandic.com)

[www.szabo-scandic.com](http://www.szabo-scandic.com)

[linkedin.com/company/szaboscandic](https://www.linkedin.com/company/szaboscandic) 



## UK Office

### Everest Biotech Ltd

Cherwell Innovation Centre  
77 Heyford Park  
Upper Heyford  
Oxfordshire  
OX25 5HD  
UK

Enquiries:

[info@everestbiotech.com](mailto:info@everestbiotech.com)

Sales:

[sales@everestbiotech.com](mailto:sales@everestbiotech.com)

Tech support:

[support@everestbiotech.com](mailto:support@everestbiotech.com)

Tel: +44 (0)1869 238326

Fax: +44 (0)1869 238327

## US Office

### Everest Biotech c/o Abcore

405 Maple Street, Suite A106  
Ramona,  
CA 92065  
USA

Inquiries:

[info@everestbiotech.com](mailto:info@everestbiotech.com)

Sales:

[usasales@everestbiotech.com](mailto:usasales@everestbiotech.com)

Tech support:

[support@everestbiotech.com](mailto:support@everestbiotech.com)

Tel: 888-320-4628 (toll-free)

Fax: 888-841-9041

[www.everestbiotech.com](http://www.everestbiotech.com)

**Research Use Only. Not for  
diagnostic or therapeutic use.**

## EB09304 - Goat Anti-CAV3 Antibody

Size: 100µg specific antibody in 200µl



### Target Protein

**Principal Names:** CAV3, caveolin 3, LGMD1C, LQT9, MGC126100, MGC126101, MGC126129, VIP-21, VIP21, M-caveolin

**Official Symbol:** CAV3

**Accession Number(s):** NP\_203123.1

**Human GeneID(s):** [859](#)

**Non-Human GeneID(s):** 12391 (mouse), 29161 (rat)

**Important Comments:** Reported variants represent identical protein (NP\_001225.1; NP\_203123.1).

### Immunogen

Peptide with sequence EHTDLEAQIVKDIH-C, from the N Terminus of the protein sequence according to NP\_203123.1.

Please note the [peptide](#) is available for sale.

### Purification and Storage

Purified from goat serum by ammonium sulphate precipitation followed by antigen affinity chromatography using the immunizing peptide.

Supplied at 0.5 mg/ml in Tris saline, 0.02% sodium azide, pH7.3 with 0.5% bovine serum albumin.

Aliquot and store at -20°C. Minimize freezing and thawing.

### Applications Tested

**Peptide ELISA:** antibody detection limit dilution 1:4000.

**Western blot:** Approx 23kDa band observed in Human, Mouse and Rat Heart lysates and approx. 20kDa in Pig Heart and Skeletal Muscle lysates (calculated MW of 17.3kDa according to Human NP\_203123.1, 17.4kDa according to Mouse NP\_031643.1, Rat NP\_062028.1 and Pig NP\_001032226.1 ). This molecular weight is routinely observed by other sources. Recommended concentration: 0.1-0.3µg/ml. Primary incubation 1 hour at room temperature.

**IHC:** In paraffin embedded Human Skeletal Muscle shows peripheral staining of fibres. Recommended concentration, 3-5µg/ml.

### Species Reactivity

**Tested:** Human, Mouse, Rat, Pig

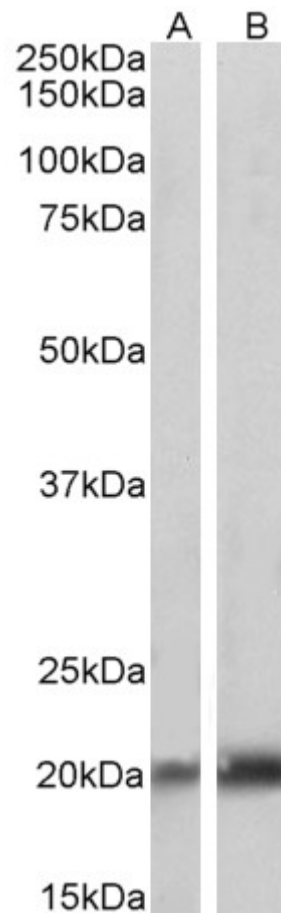
**Expected from sequence similarity:** Human, Mouse, Rat, Dog, Cow, Pig



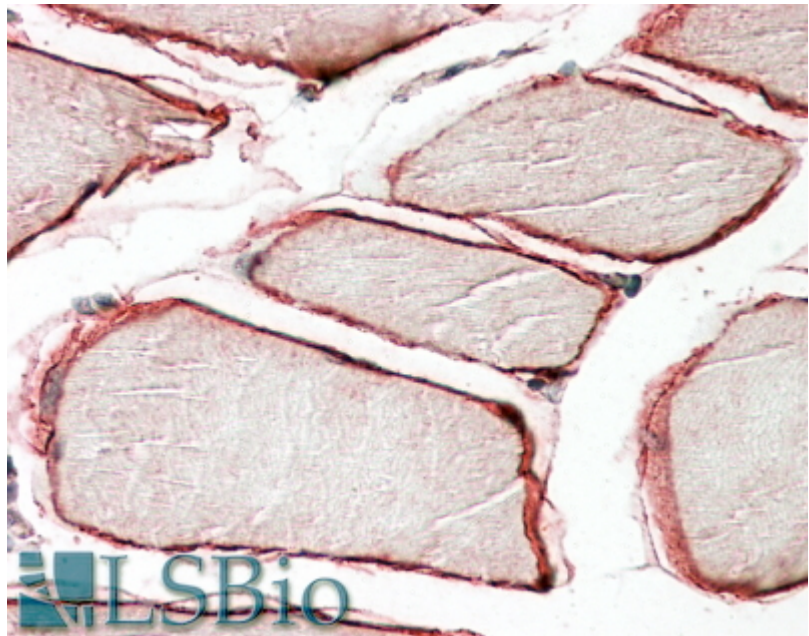
EB09304 (0.3 $\mu$ g/ml) staining of Human Heart lysate (35 $\mu$ g protein in RIPA buffer). Detected by chemiluminescence.



EB09304 (0.3 $\mu$ g/ml) staining of Mouse (A) and Rat (B) Heart lysates (35 $\mu$ g protein in RIPA buffer). Detected by chemiluminescence.



EB09304 (0.1µg/ml) staining of Pig Skeletal Muscle (A) and Heart (B) lysates (35µg protein in RIPA buffer). Detected by chemiluminescence.



EB09304 (3.8µg/ml) staining of paraffin embedded Human Skeletal Muscle. Steamed antigen retrieval with citrate buffer pH 6, AP-staining.