



SZABO SCANDIC

Part of Europa Biosite

Produktinformation



Forschungsprodukte & Biochemikalien



Zellkultur & Verbrauchsmaterial



Diagnostik & molekulare Diagnostik



Laborgeräte & Service

Weitere Information auf den folgenden Seiten!
See the following pages for more information!



Lieferung & Zahlungsart

siehe unsere [Liefer- und Versandbedingungen](#)

Zuschläge

- Mindermengenzuschlag
- Trockeneiszuschlag
- Gefahrgutzuschlag
- Expressversand

SZABO-SCANDIC HandelsgmbH

Quellenstraße 110, A-1100 Wien

T. +43(0)1 489 3961-0

F. +43(0)1 489 3961-7

mail@szabo-scandic.com

www.szabo-scandic.com

[linkedin.com/company/szaboscandic](https://www.linkedin.com/company/szaboscandic) 



UK Office

Everest Biotech Ltd

Cherwell Innovation Centre
77 Heyford Park
Upper Heyford
Oxfordshire
OX25 5HD
UK

Enquiries:

info@everestbiotech.com

Sales:

sales@everestbiotech.com

Tech support:

support@everestbiotech.com

Tel: +44 (0)1869 238326

Fax: +44 (0)1869 238327

US Office

Everest Biotech c/o Abcore

405 Maple Street, Suite A106
Ramona,
CA 92065
USA

Inquiries:

info@everestbiotech.com

Sales:

usasales@everestbiotech.com

Tech support:

support@everestbiotech.com

Tel: 888-320-4628 (toll-free)

Fax: 888-841-9041

www.everestbiotech.com

**Research Use Only. Not for
diagnostic or therapeutic use.**

EB09310 - Goat Anti-SGLT1 Antibody

Size: 100µg specific antibody in 200µl



Target Protein

Principal Names: SLC5A1, solute carrier family 5 (sodium/glucose cotransporter), member 1, D22S675, NAGT, SGLT1, Human Na⁺/glucose cotransporter 1 mRNA, complete cds, sodium/glucose cotransporter 1, solute carrier family 5 (sodium/glucose transporter), member 1

Official Symbol: SLC5A1

Accession Number(s): NP_000334.1

Human GeneID(s): [6523](#)

Immunogen

Peptide with sequence C-KETIEIETQVPEKKK, from the internal region of the protein sequence according to NP_000334.1.

Please note the [peptide](#) is available for sale.

Purification and Storage

Purified from goat serum by ammonium sulphate precipitation followed by antigen affinity chromatography using the immunizing peptide.

Supplied at 0.5 mg/ml in Tris saline, 0.02% sodium azide, pH7.3 with 0.5% bovine serum albumin.

Aliquot and store at -20°C. Minimize freezing and thawing.

Applications Tested

Peptide ELISA: antibody detection limit dilution 1:4000.

Western blot: Approx 75kDa band observed in isolated Brush Border membranes from Human Kidney (calculated MW of 73.5kDa according to NP_000334.1). Recommended concentration: 0.3-1µg/ml. Primary incubation was 1 hour. This antibody has been successfully used in WB on Mouse in the following papers, PMID: 34198013, 30503674 and 28174043.

IHC: In paraffin embedded Human Small Intestine shows staining of the glycocalix.

Recommended concentration: 3-6µg/ml. This antibody has been successfully used in IHC on Mouse in the following paper, PMID: 34198013.

Immunocytochemistry: Fig A.Frozen sections of Human Kidney show staining of the brush borders in DCT, while only weak background was observed in Rat and Pig Kidney. Recommended concentration: 2-4ug/ml. Fig B.PFA-fixed 4µm cryosections of Human Kidney shows staining of the brush border of proximal straight tubules (S3 segments) in the outer stripe zone. The signal drops to background levels upon blocking with the immunizing peptide.

Species Reactivity

Tested: Human, Mouse

Expected from sequence similarity: Human

Specific References

This antibody has been successfully used in Western blot and IHC on Mouse:

Barun Das, Kevin Okamoto, John Rabalais, Jocelyn A. Young, Kim E.

Barrett, and Mamata Sivagnanam

Aberrant Epithelial Differentiation Contributes to Pathogenesis in a Murine Model of Congenital Tufting Enteropathy.

Cell Mol Gastroenterol Hepatol. 2021; 12(4): 1353-1371.

PMID: 34198013

This antibody has been successfully used in Western blot on Mouse:

Yui Yamazaki, Kyoko Arita, Shinichi Harada, Shogo Tokuyama

Activation of c-Jun N-terminal kinase and p38 after cerebral ischemia upregulates cerebral sodium-glucose transporter type 1

Journal of Pharmacological Sciences (November 2018)

PMID: 30503674

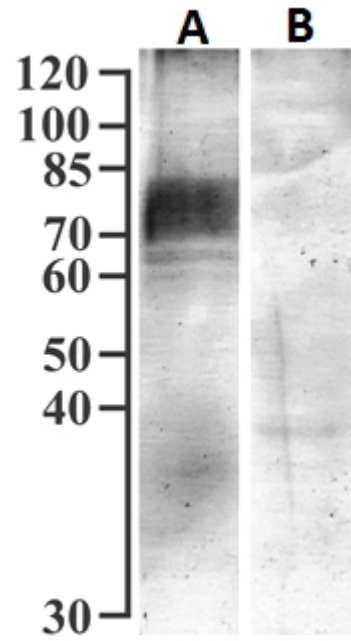
This antibody has been successfully used in Western blot on Mouse:

Yamazaki Y, Harada S, Wada T, Hagiwara T, Yoshida S, Tokuyama S

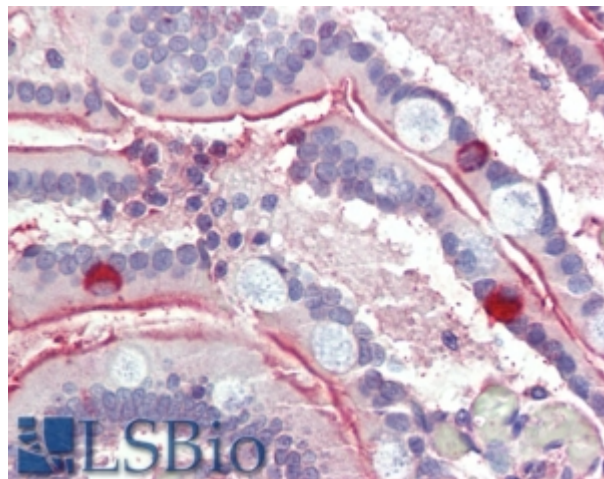
Sodium influx through cerebral sodium-glucose transporter type 1 exacerbates the development of c

Eur J Pharmacol. 2017 Mar 15;799:103-110.

PMID: 28174043



EB09310 (1µg/ml) staining of isolated Brush Border Membranes from Human Kidney (75µg protein) with (B) and without (A) blocking with the immunizing peptide. Detected by chemiluminescence. Data obtained from I. Vrhovac and I. Sabolic, Institute for Medical Research and Occupational Health, Zagreb, Croatia.



EB09310 (3.8µg/ml) staining of paraffin embedded Human Small Intestine. Steamed antigen retrieval with citrate buffer pH 6, AP-staining.

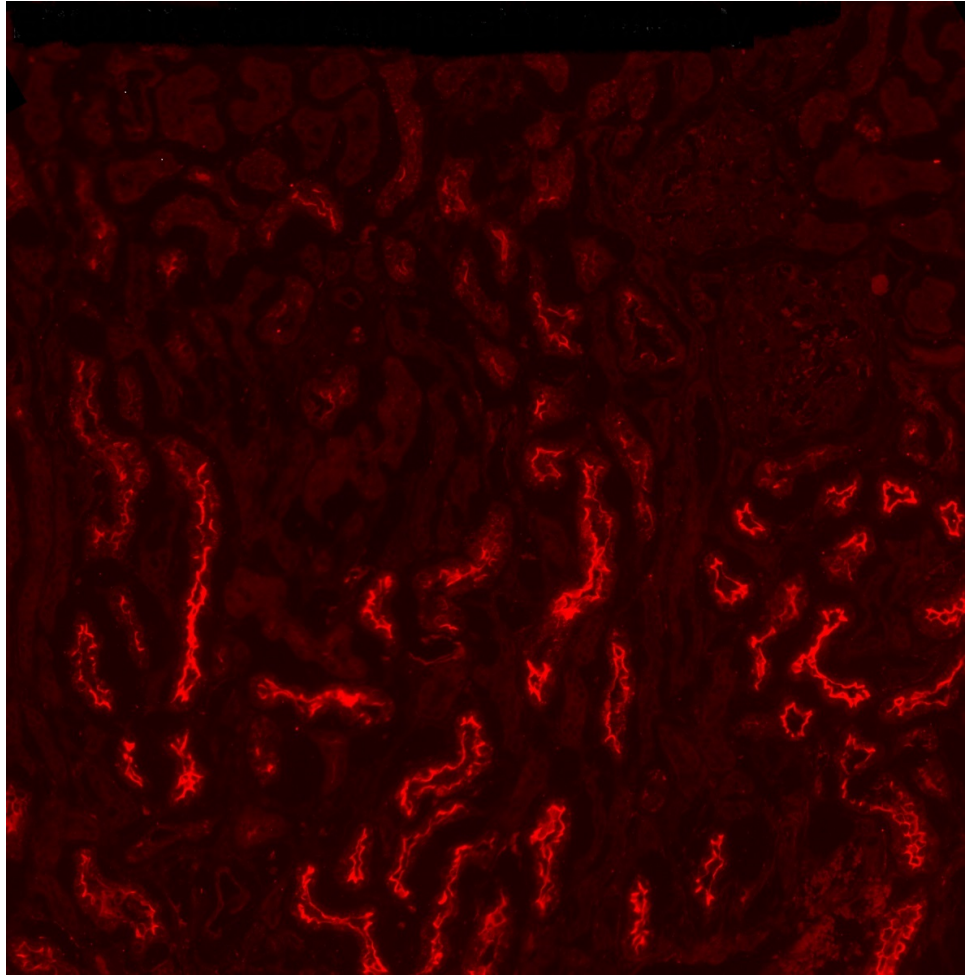


Fig A: EB09310 (2.5µg/ml) overnight staining of PFA-perfused cryosections of Human Kidney. Microwaved antigen retrieval with citrate buffer pH 6, CY3-staining. Data obtained from I Vrhovac and I Sabolic, Institute for Medical Research and Occupational Health, Zagreb, Croatia.

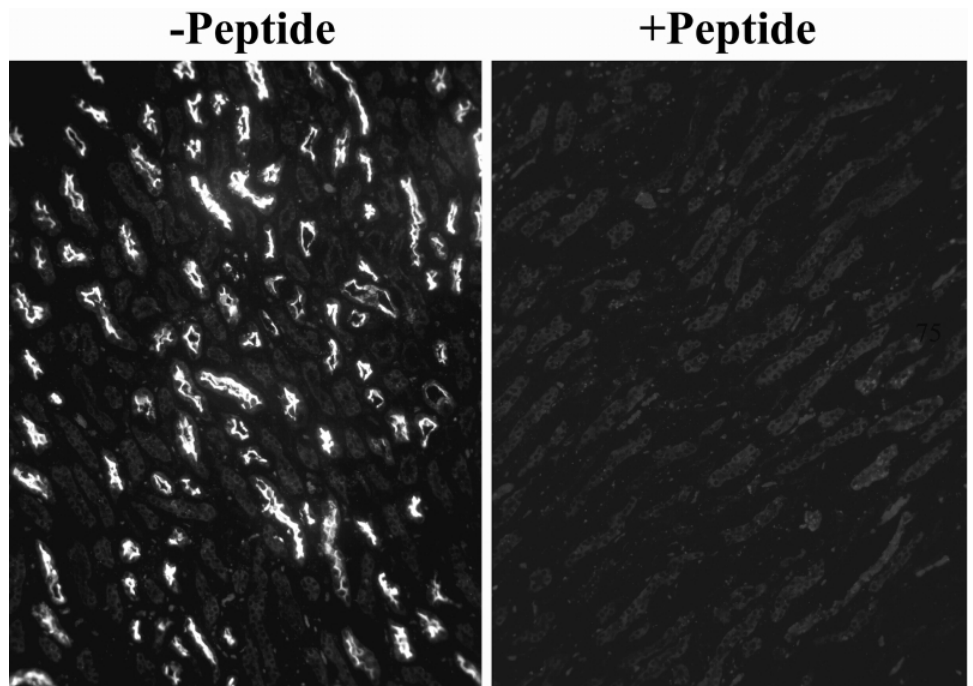


Fig B: EB09310 (0.1µg/ml) staining of cryosections of Human Kidney. Data obtained from I Vrhovac and I Sabolic, Institute for Medical Research and Occupational Health, Zagreb, Croatia.