



SZABO SCANDIC

Part of Europa Biosite

Produktinformation



Forschungsprodukte & Biochemikalien



Zellkultur & Verbrauchsmaterial



Diagnostik & molekulare Diagnostik



Laborgeräte & Service

Weitere Information auf den folgenden Seiten!
See the following pages for more information!



Lieferung & Zahlungsart

siehe unsere [Liefer- und Versandbedingungen](#)

Zuschläge

- Mindermengenzuschlag
- Trockeneiszuschlag
- Gefahrgutzuschlag
- Expressversand

SZABO-SCANDIC HandelsgmbH

Quellenstraße 110, A-1100 Wien

T. +43(0)1 489 3961-0

F. +43(0)1 489 3961-7

mail@szabo-scandic.com

www.szabo-scandic.com

[linkedin.com/company/szaboscandic](https://www.linkedin.com/company/szaboscandic) 



UK Office

Everest Biotech Ltd

Cherwell Innovation Centre
77 Heyford Park
Upper Heyford
Oxfordshire
OX25 5HD
UK

Enquiries:

info@everestbiotech.com

Sales:

sales@everestbiotech.com

Tech support:

support@everestbiotech.com

Tel: +44 (0)1869 238326

Fax: +44 (0)1869 238327

US Office

Everest Biotech c/o Abcore

405 Maple Street, Suite A106
Ramona,
CA 92065
USA

Inquiries:

info@everestbiotech.com

Sales:

usasales@everestbiotech.com

Tech support:

support@everestbiotech.com

Tel: 888-320-4628 (toll-free)

Fax: 888-841-9041

www.everestbiotech.com

**Research Use Only. Not for
diagnostic or therapeutic use.**

EB09390 - Goat Anti-ACPP / PAP Antibody

Size: 100µg specific antibody in 200µl



Target Protein

Principal Names: ACPP, acid phosphatase, prostate, ACP-3, ACP3, PAP, prostatic acid phosphatase

Official Symbol: ACP3

Accession Number(s): NP_001090.2

Human GeneID(s): [55](#)

Non-Human GeneID(s): 56318 (mouse), 56780 (rat)

Important Comments: This antibody is expected to recognize both isoforms (NP_001090.2; NP_001127666.1).

Immunogen

Peptide with sequence C-YGIHKQKEKSRLQ, from the internal region of the protein sequence according to NP_001090.2.

Please note the [peptide](#) is available for sale.

Purification and Storage

Purified from goat serum by ammonium sulphate precipitation followed by antigen affinity chromatography using the immunizing peptide.

Supplied at 0.5 mg/ml in Tris saline, 0.02% sodium azide, pH7.3 with 0.5% bovine serum albumin.

Aliquot and store at -20°C. Minimize freezing and thawing.

Applications Tested

Peptide ELISA: antibody detection limit dilution 1:64000.

Western blot: Approx 50kDa band observed in Human Prostate lysates (calculated MW of 44.6kDa according to NP_001090.2). The observed molecular weight corresponds to earlier findings in literature with different antibodies (Patel et al, Clin Chem. 1986 Oct;32(10):1832-5. PMID: 3530530). Recommended concentration: 0.3-1µg/ml.

IHC: In paraffin embedded Human Prostate shows cytoplasm staining in some secretory cells of the gland. Recommended concentration, 3-5µg/ml. This antibody has been successfully used in IHC on Mouse: Nousiainen HO et al. (2014) PMID: 24846136.

Immunofluorescence: This antibody has been successfully used in IF on Mouse: Nousiainen HO et al. (2014) PMID: 24846136.

Species Reactivity

Tested: Human, Mouse

Expected from sequence similarity: Human, Mouse, Rat, Dog, Cow

Specific Reference

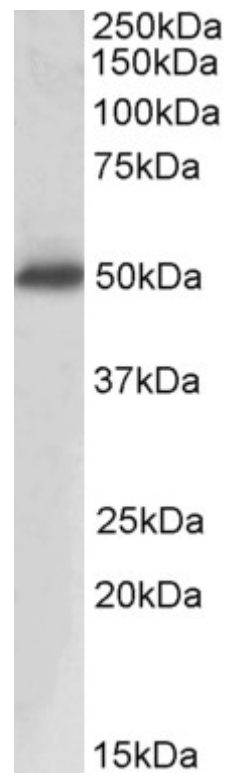
This antibody has been successfully used in IHC and IF on Mouse:

Nousiainen HO, Quintero IB, Myöhänen TT, Voikar V, Mijatovic J, Segerstråle M, Herrala AM, Kuleskaya N, Pulkka AE, Kivinummi T, Abo Ramadan U, Taira T, Piepponen TP, Rauvala H, Vihko P.

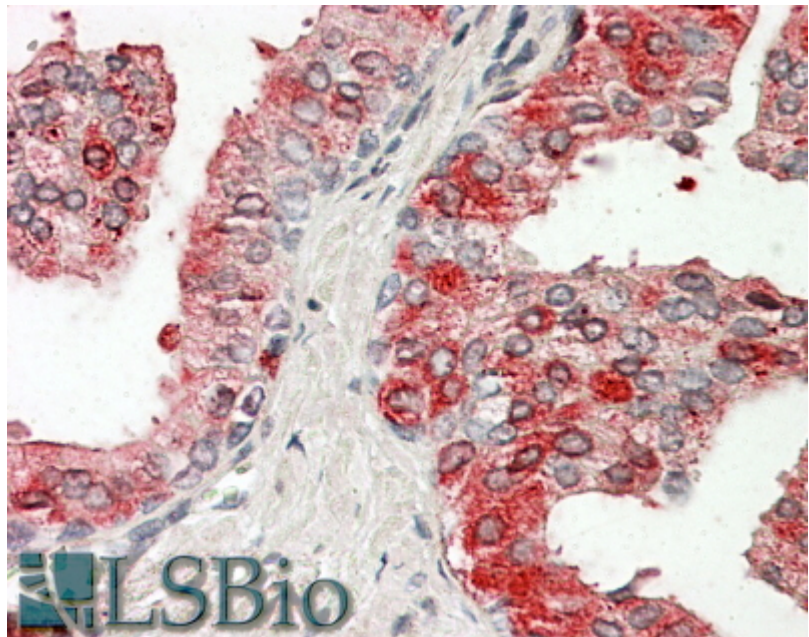
Mice deficient in transmembrane prostatic Acid phosphatase display increased GABAergic transmission and neurological alterations.

PLoS One. 2014 May 20;9(5):e97851.

PMID: 24846136



EB09390 (0.3 μ g/ml) staining of Human Prostate lysate (35 μ g protein in RIPA buffer). Primary incubation was 1 hour. Detected by chemiluminescence.



EB09390 (3.8 μ g/ml) staining of paraffin embedded Human Prostate. Steamed antigen retrieval with citrate buffer pH 6, AP-staining.