



SZABO SCANDIC

Part of Europa Biosite

Produktinformation



Forschungsprodukte & Biochemikalien



Zellkultur & Verbrauchsmaterial



Diagnostik & molekulare Diagnostik



Laborgeräte & Service

Weitere Information auf den folgenden Seiten!
See the following pages for more information!



Lieferung & Zahlungsart

siehe unsere [Liefer- und Versandbedingungen](#)

Zuschläge

- Mindermengenzuschlag
- Trockeneiszuschlag
- Gefahrgutzuschlag
- Expressversand

SZABO-SCANDIC HandelsgmbH

Quellenstraße 110, A-1100 Wien

T. +43(0)1 489 3961-0

F. +43(0)1 489 3961-7

mail@szabo-scandic.com

www.szabo-scandic.com

[linkedin.com/company/szaboscandic](https://www.linkedin.com/company/szaboscandic) 



UK Office

Everest Biotech Ltd

Cherwell Innovation Centre
77 Heyford Park
Upper Heyford
Oxfordshire
OX25 5HD
UK

Enquiries:

info@everestbiotech.com

Sales:

sales@everestbiotech.com

Tech support:

support@everestbiotech.com

Tel: +44 (0)1869 238326

Fax: +44 (0)1869 238327

US Office

Everest Biotech c/o Abcore

405 Maple Street, Suite A106
Ramona,
CA 92065
USA

Inquiries:

info@everestbiotech.com

Sales:

usasales@everestbiotech.com

Tech support:

support@everestbiotech.com

Tel: 888-320-4628 (toll-free)

Fax: 888-841-9041

www.everestbiotech.com

**Research Use Only. Not for
diagnostic or therapeutic use.**

EB09412 - Goat Anti-CSX1 / NKX2-5 Antibody

Size: 100µg specific antibody in 200µl



Target Protein

Principal Names: NKX2-5, NK2 transcription factor related, locus 5 (Drosophila), CHNG5, CSX, CSX1, NKX2.5, NKX2E, NKX4-1, NK2 transcription factor homolog E, NK2 transcription factor related, locus 5, cardiac-specific homeo box, tinman paralog

Official Symbol: NKX2-5

Accession Number(s): NP_004378.1; NP_001159647.1; NP_001159648.1

Human GeneID(s): [1482](#)

Non-Human GeneID(s): 18091 (mouse), 114109 (rat)

Important Comments: This antibody is expected to recognize all three reported isoforms (NP_004378.1; NP_001159647.1; NP_001159648.1).

Immunogen

Peptide with sequence C-PRAYSDDPAKDPR, from the internal region of the protein sequence according to NP_004378.1; NP_001159647.1; NP_001159648.1.

Please note the [peptide](#) is available for sale.

Purification and Storage

Purified from goat serum by ammonium sulphate precipitation followed by antigen affinity chromatography using the immunizing peptide.

Supplied at 0.5 mg/ml in Tris saline, 0.02% sodium azide, pH7.3 with 0.5% bovine serum albumin.

Aliquot and store at -20°C. Minimize freezing and thawing.

Applications Tested

Peptide ELISA: antibody detection limit dilution 1:32000.

Western blot: Approx. 38kDa band observed in Human, Mouse and Rat Heart lysates (calculated MW of 34.9kDa according to Human NP_004378.1, 34.2kDa according to Mouse NP_032726.1 and 34.3kDa according to Rat NP_446103.2). Recommended concentration: 1-3µg/ml. Primary incubation 1 hour at room temperature.

IHC: Paraffin embedded Human Heart. Recommended concentration: 5-6µg/ml.

Species Reactivity

Tested: Human, Mouse, Rat

Expected from sequence similarity: Human, Mouse, Rat, Cow, Dog

Specific Reference

This antibody has been successfully used in Western blot on Rat:

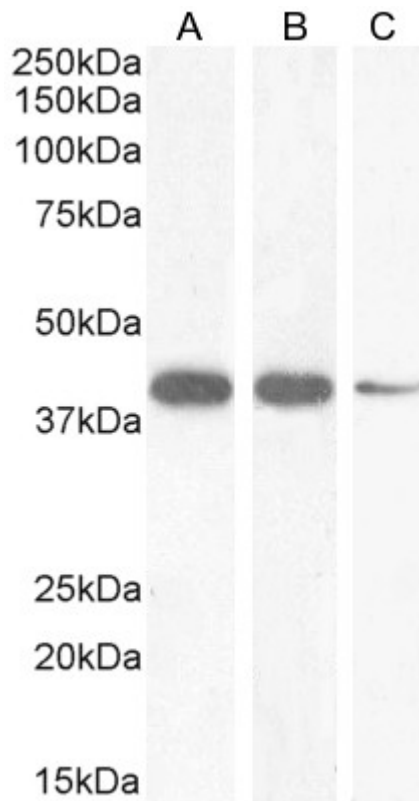
Sergio Li Calzi, Todd Cook, Domenico G. Della Rocca, Juan Zhang, Vinayak Shenoy, Yuanqing Yan, Andrew Espejo, Anandharajan Rathinasabapathy, Max H. Jacobsen, Tatiana Salazar, George E. Sandusky, Lynn C. Shaw, Keith March, Mohan K. Raizada, Carl J. Pepine, Michael J. Katovich, and Maria B. Grant

Complementary Embryonic and Adult Cell Populations Enhance Myocardial Repair in Rat Myocardial Injury Model

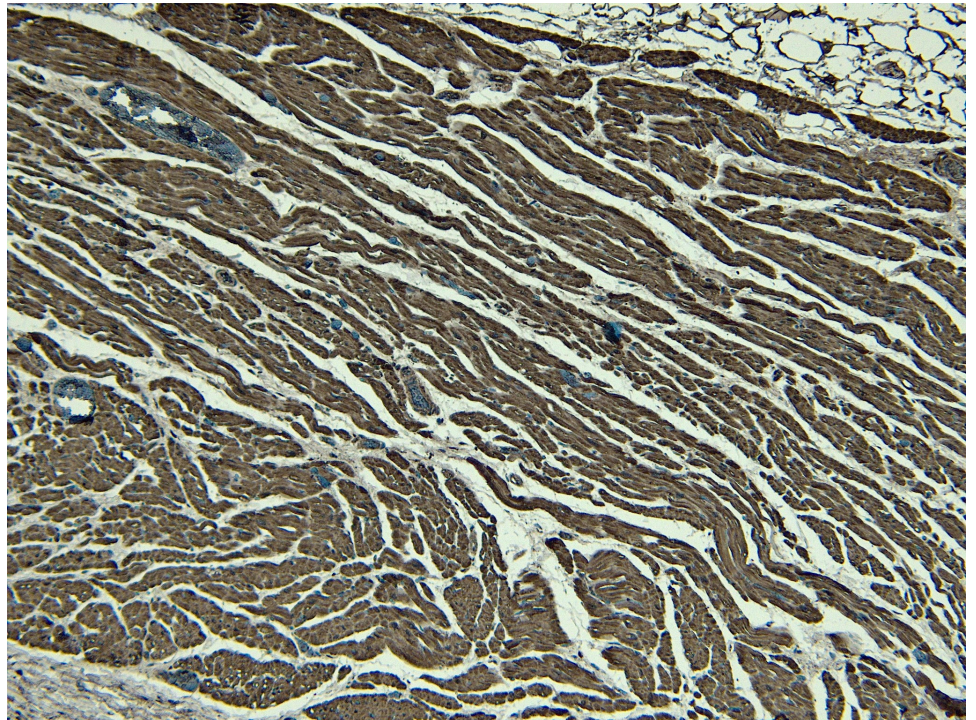
Stem Cells International Volume 2019, Article ID 3945850, 11 pages

<https://doi.org/10.1155/2019/3945850> (2019)

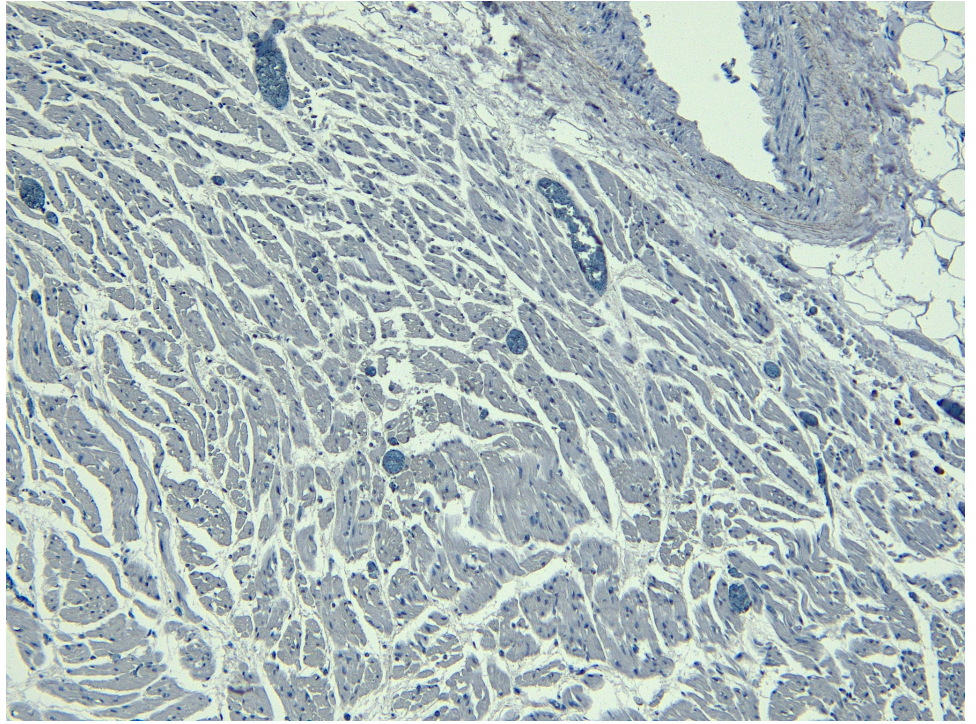
PMID: 31781239



EB09412 (1 μ g/ml) staining of Human (A), Mouse (B) and (2 μ g/ml) Rat (C) Heart lysate (35 μ g protein in RIPA buffer). Detected by chemiluminescence.



EB09412 (6 μ g/ml) staining of paraffin embedded Human Heart. Heat induced antigen retrieval with citrate buffer pH 6, HRP-staining.



EB09412 Negative Control showing staining of paraffin embedded Human Heart, with no primary antibody.