



# SZABO SCANDIC

Part of Europa Biosite

## Produktinformation



Forschungsprodukte & Biochemikalien



Zellkultur & Verbrauchsmaterial



Diagnostik & molekulare Diagnostik



Laborgeräte & Service

Weitere Information auf den folgenden Seiten!  
See the following pages for more information!



### Lieferung & Zahlungsart

siehe unsere [Liefer- und Versandbedingungen](#)

### Zuschläge

- Mindermengenzuschlag
- Trockeneiszuschlag
- Gefahrgutzuschlag
- Expressversand

### SZABO-SCANDIC HandelsgmbH

Quellenstraße 110, A-1100 Wien

T. +43(0)1 489 3961-0

F. +43(0)1 489 3961-7

[mail@szabo-scandic.com](mailto:mail@szabo-scandic.com)

[www.szabo-scandic.com](http://www.szabo-scandic.com)

[linkedin.com/company/szaboscandic](https://www.linkedin.com/company/szaboscandic) 



## UK Office

### Everest Biotech Ltd

Cherwell Innovation Centre  
77 Heyford Park  
Upper Heyford  
Oxfordshire  
OX25 5HD  
UK

Enquiries:

[info@everestbiotech.com](mailto:info@everestbiotech.com)

Sales:

[sales@everestbiotech.com](mailto:sales@everestbiotech.com)

Tech support:

[support@everestbiotech.com](mailto:support@everestbiotech.com)

Tel: +44 (0)1869 238326

Fax: +44 (0)1869 238327

## US Office

### Everest Biotech c/o Abcore

405 Maple Street, Suite A106  
Ramona,  
CA 92065  
USA

Inquiries:

[info@everestbiotech.com](mailto:info@everestbiotech.com)

Sales:

[usasales@everestbiotech.com](mailto:usasales@everestbiotech.com)

Tech support:

[support@everestbiotech.com](mailto:support@everestbiotech.com)

Tel: 888-320-4628 (toll-free)

Fax: 888-841-9041

[www.everestbiotech.com](http://www.everestbiotech.com)

**Research Use Only. Not for  
diagnostic or therapeutic use.**

## EB09415 - Goat Anti-XPNPEP1 Antibody

Size: 100µg specific antibody in 200µl



### Target Protein

**Principal Names:** XPNPEP1, X-prolyl aminopeptidase (aminopeptidase P) 1, soluble, SAMP, XPNPEP, XPNPEPL, XPNPEPL1, OTTHUMP00000020457, OTTHUMP00000058856, X-prolyl aminopeptidase (aminopeptidase P) 1, soluble (SAMP, XPNPEP, XPNPEPL), X-prolyl aminopeptidase (aminopeptidase P)-like

**Official Symbol:** XPNPEP1

**Accession Number(s):** NP\_065116.2; NP\_001161076.1

**Human GeneID(s):** [7511](#)

**Non-Human GeneID(s):** 170750 (mouse), 170751 (rat)

**Important Comments:** This antibody is expected to recognize isoform 1 and 2 (NP\_065116.2; NP\_001161076.1).

### Immunogen

Peptide with sequence C-LIRETQPISKQH, from the C Terminus of the protein sequence according to NP\_065116.2; NP\_001161076.1.

Please note the [peptide](#) is available for sale.

### Purification and Storage

Purified from goat serum by ammonium sulphate precipitation followed by antigen affinity chromatography using the immunizing peptide.

Supplied at 0.5 mg/ml in Tris saline, 0.02% sodium azide, pH7.3 with 0.5% bovine serum albumin.

Aliquot and store at -20°C. Minimize freezing and thawing.

### Applications Tested

**Peptide ELISA:** antibody detection limit dilution 1:32000.

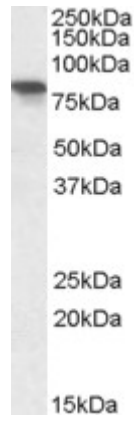
**Western blot:** Approx 80kDa band observed in Human Heart, Skeletal Muscle and Pancreas lysates and 75kDa band observed in Mouse and Rat Small Intestines, and 75kDa band observed in Pig Pancreas lysate (calculated MW of 69.9kDa according to NP\_065116.2). Recommended concentration: 0.1-0.3µg/ml. Primary incubation was 1 hour.

**IHC:** Paraffin embedded Human Pancreas. Recommended concentration: 5µg/ml.

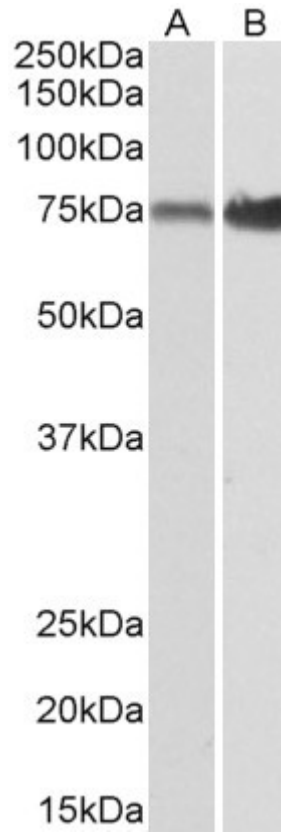
### Species Reactivity

**Tested:** Human, Mouse, Rat, Pig

**Expected from sequence similarity:** Human, Mouse, Rat, Cow, Pig, Dog



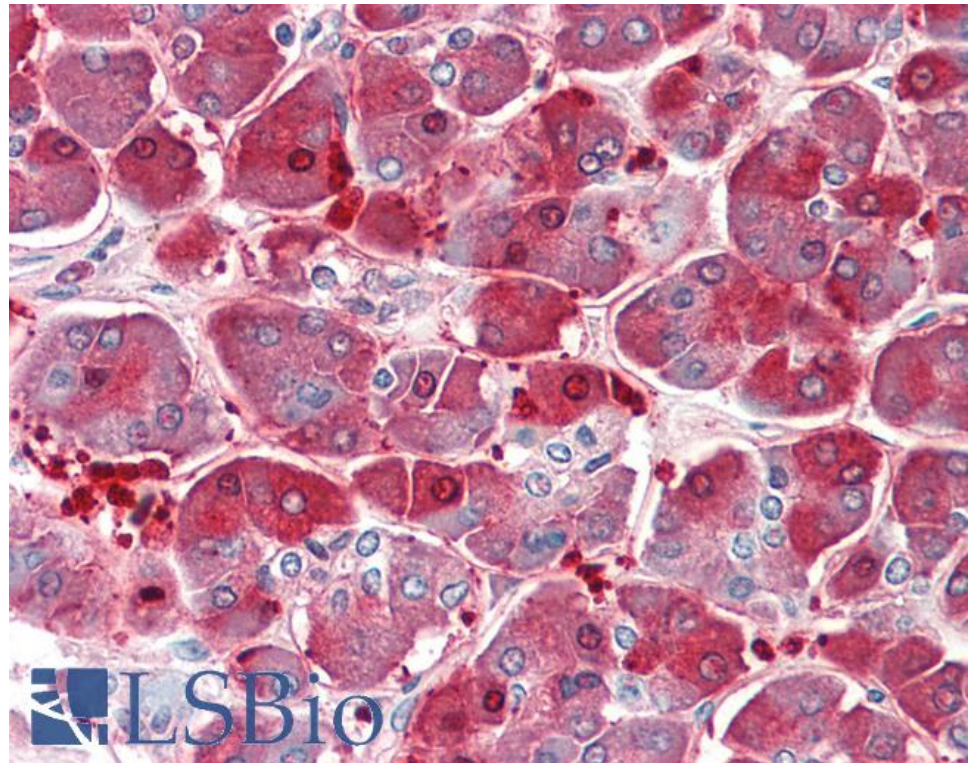
EB09415 (0.3 $\mu$ g/ml) staining of Human Pancreas lysate (35 $\mu$ g protein in RIPA buffer). Detected by chemiluminescence.



EB09415 (0.1 $\mu$ g/ml) staining of Mouse (A) and Rat (B) Small Intestine lysates (35 $\mu$ g protein in RIPA buffer). Detected by chemiluminescence.



EB09415 (0.1 $\mu$ g/ml) staining of Pig Pancreas lysate (35 $\mu$ g protein in RIPA buffer). Detected by chemiluminescence.



EB09415 (5 $\mu$ g/ml) staining of paraffin embedded Human Pancreas. Steamed antigen retrieval with citrate buffer pH 6, AP-staining.