



SZABO SCANDIC

Part of Europa Biosite

Produktinformation



Forschungsprodukte & Biochemikalien



Zellkultur & Verbrauchsmaterial



Diagnostik & molekulare Diagnostik



Laborgeräte & Service

Weitere Information auf den folgenden Seiten!
See the following pages for more information!



Lieferung & Zahlungsart

siehe unsere [Liefer- und Versandbedingungen](#)

Zuschläge

- Mindermengenzuschlag
- Trockeneiszuschlag
- Gefahrgutzuschlag
- Expressversand

SZABO-SCANDIC HandelsgmbH

Quellenstraße 110, A-1100 Wien

T. +43(0)1 489 3961-0

F. +43(0)1 489 3961-7

mail@szabo-scandic.com

www.szabo-scandic.com

[linkedin.com/company/szaboscandic](https://www.linkedin.com/company/szaboscandic) 



UK Office

Everest Biotech Ltd

Cherwell Innovation Centre
77 Heyford Park
Upper Heyford
Oxfordshire
OX25 5HD
UK

Enquiries:

info@everestbiotech.com

Sales:

sales@everestbiotech.com

Tech support:

support@everestbiotech.com

Tel: +44 (0)1869 238326

Fax: +44 (0)1869 238327

US Office

Everest Biotech c/o Abcore

405 Maple Street, Suite A106
Ramona,
CA 92065
USA

Inquiries:

info@everestbiotech.com

Sales:

usasales@everestbiotech.com

Tech support:

support@everestbiotech.com

Tel: 888-320-4628 (toll-free)

Fax: 888-841-9041

www.everestbiotech.com

**Research Use Only. Not for
diagnostic or therapeutic use.**

EB09441 - Goat Anti-TLR4 / CD284 Antibody

Size: 100µg specific antibody in 200µl



Target Protein

Principal Names: TLR4, toll-like receptor 4, ARMD10, CD284, TOLL, hToll, OTTHUMP00000022807, homolog of Drosophila toll

Official Symbol: TLR4

Accession Number(s): NP_612564.1

Human GeneID(s): [7099](#)

Non-Human GeneID(s): 21898 (mouse), 29260 (rat)

Immunogen

Peptide with sequence C-YSSQDEDWVRNE, from the Internal region of the protein sequence according to NP_612564.1.

Please note the [peptide](#) is available for sale.

Purification and Storage

Purified from goat serum by ammonium sulphate precipitation followed by antigen affinity chromatography using the immunizing peptide.

Supplied at 0.5 mg/ml in Tris saline, 0.02% sodium azide, pH7.3 with 0.5% bovine serum albumin.

Aliquot and store at -20°C. Minimize freezing and thawing.

Applications Tested

Peptide ELISA: antibody detection limit dilution 1:16000.

IHC: Paraffin embedded Human Spleen. Recommended concentration: 5-6µg/ml.

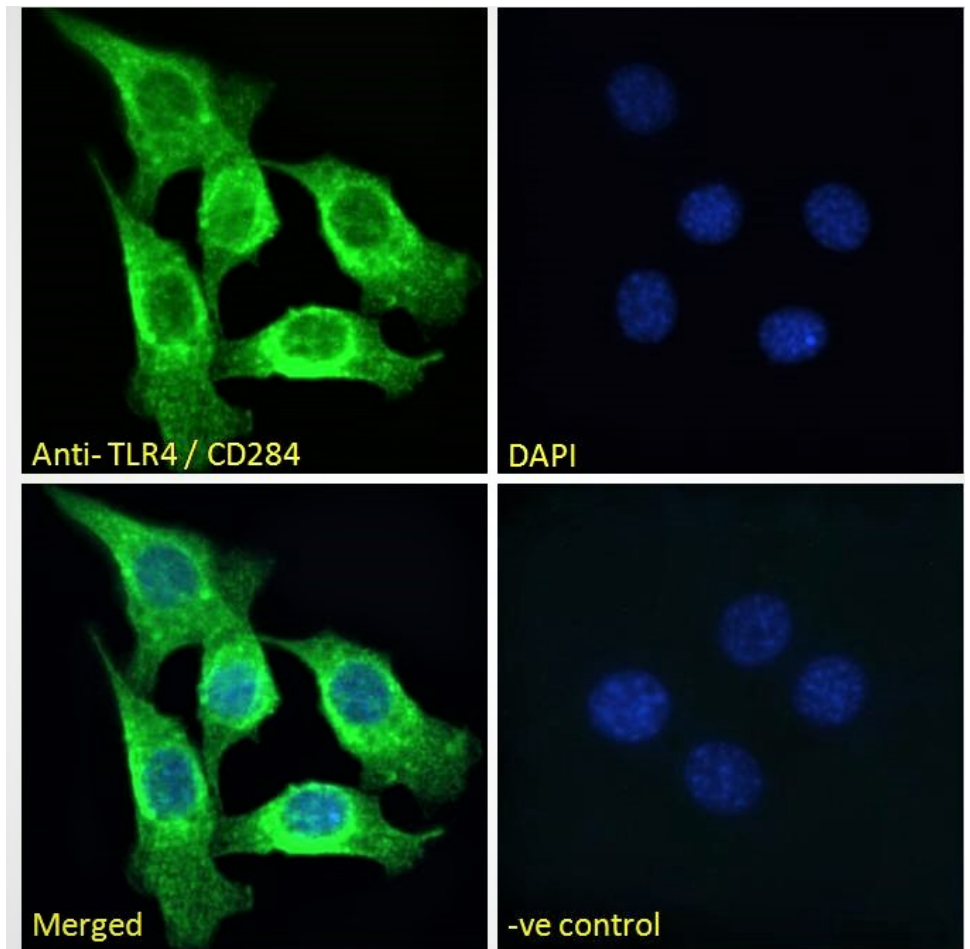
Immunofluorescence: Strong expression of the protein seen in the cytoplasm of NIH3T3 cells. Recommended concentration: 10µg/ml

Flow Cytometry: Flow cytometric analysis of U937 cells. Recommended concentration: 10ug/ml.

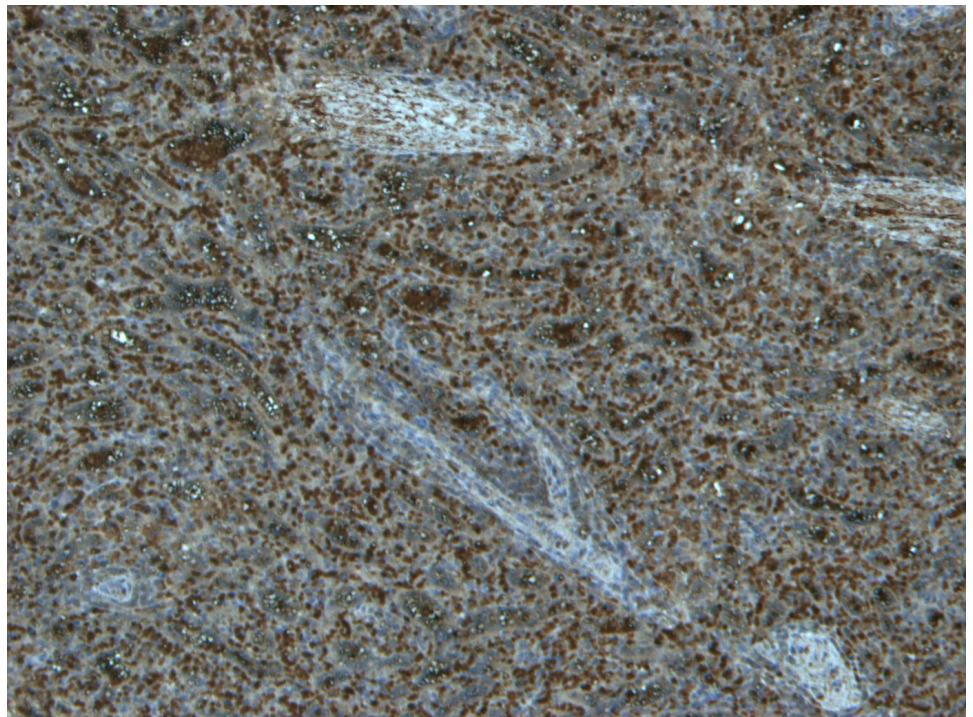
Species Reactivity

Tested: Human, Mouse

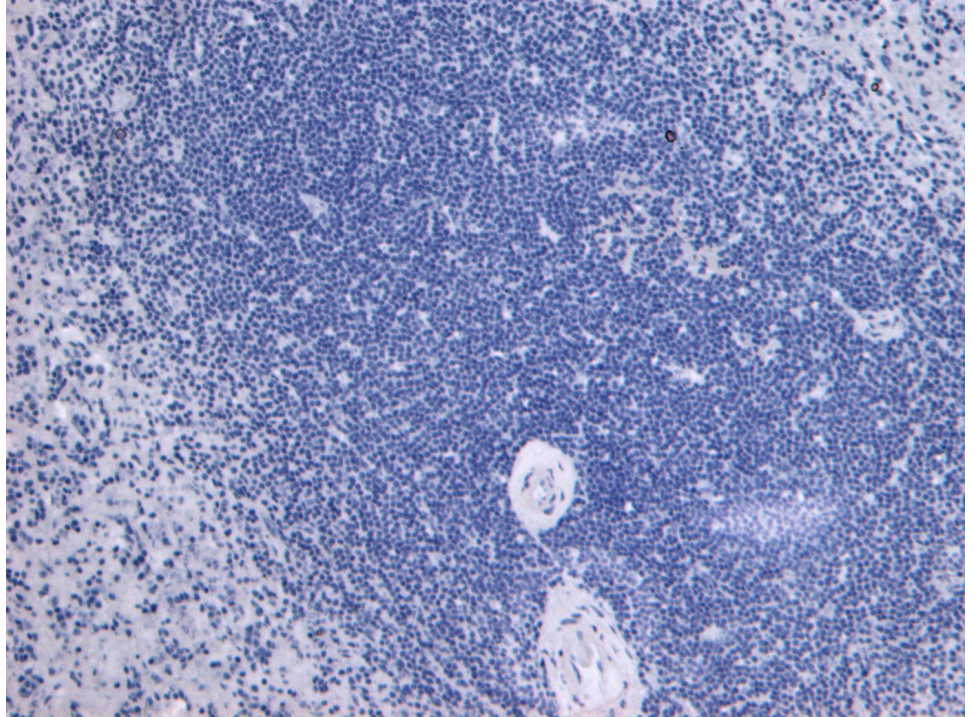
Expected from sequence similarity: Human, Mouse, Rat



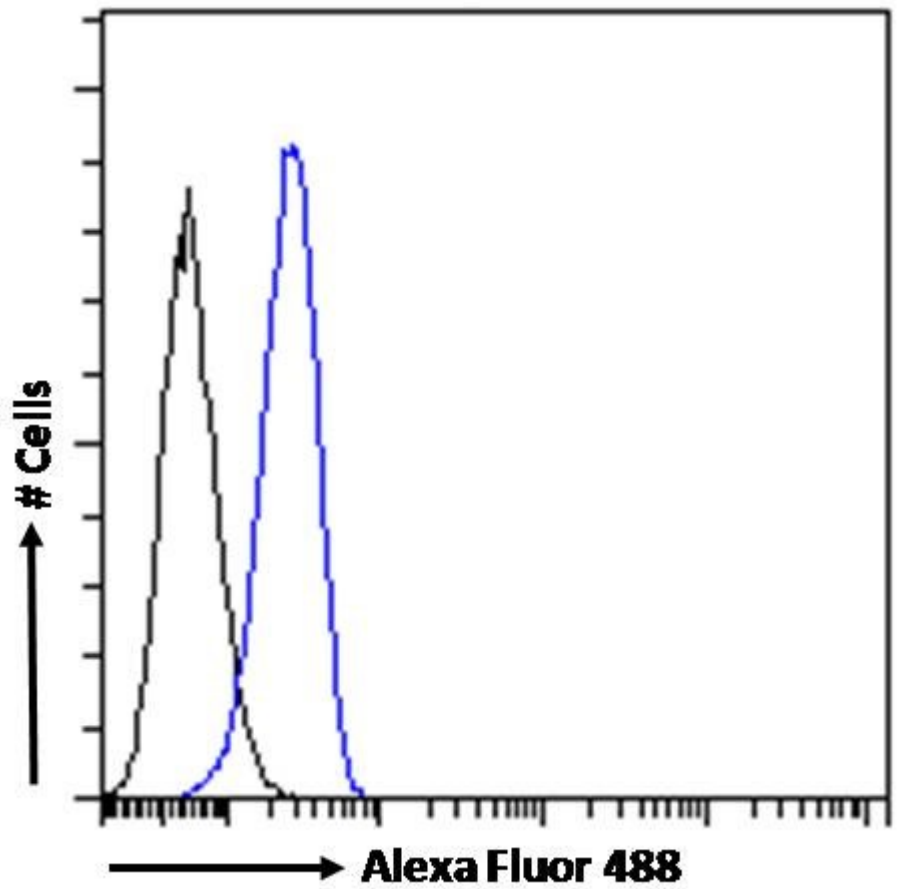
EB09441 Immunofluorescence analysis of paraformaldehyde fixed NIH3T3 cells, permeabilized with 0.15% Triton. Primary incubation 1hr (10ug/ml) followed by Alexa Fluor 488 secondary antibody (2ug/ml), showing Golgi/ER and cytoplasmic staining. The nuclear stain is DAPI (blue). Negative control: Unimmunized goat IgG (10ug/ml) followed by Alexa Fluor 488 secondary antibody (2ug/ml).



EB09441 (6µg/ml) staining of paraffin embedded Human Spleen. Heat induced antigen retrieval with citrate buffer pH 6, HRP-staining.



EB09441 Negative Control showing staining of paraffin embedded Human Spleen, with no primary antibody.



EB09441 Flow cytometric analysis of paraformaldehyde fixed U937 cells (blue line), permeabilized with 0.5% Triton. Primary incubation 1hr (10ug/ml) followed by Alexa Fluor 488 secondary antibody (1ug/ml). IgG control:

Unimmunized goat IgG (black line) followed by Alexa Fluor 488 secondary antibody.