



SZABO SCANDIC

Part of Europa Biosite

Produktinformation



Forschungsprodukte & Biochemikalien



Zellkultur & Verbrauchsmaterial



Diagnostik & molekulare Diagnostik



Laborgeräte & Service

Weitere Information auf den folgenden Seiten!
See the following pages for more information!



Lieferung & Zahlungsart

siehe unsere [Liefer- und Versandbedingungen](#)

Zuschläge

- Mindermengenzuschlag
- Trockeneiszuschlag
- Gefahrgutzuschlag
- Expressversand

SZABO-SCANDIC HandelsgmbH

Quellenstraße 110, A-1100 Wien

T. +43(0)1 489 3961-0

F. +43(0)1 489 3961-7

mail@szabo-scandic.com

www.szabo-scandic.com

[linkedin.com/company/szaboscandic](https://www.linkedin.com/company/szaboscandic) 



UK Office

Everest Biotech Ltd

Cherwell Innovation Centre
77 Heyford Park
Upper Heyford
Oxfordshire
OX25 5HD
UK

Enquiries:

info@everestbiotech.com

Sales:

sales@everestbiotech.com

Tech support:

support@everestbiotech.com

Tel: +44 (0)1869 238326

Fax: +44 (0)1869 238327

US Office

Everest Biotech c/o Abcore

405 Maple Street, Suite A106
Ramona,
CA 92065
USA

Inquiries:

info@everestbiotech.com

Sales:

usasales@everestbiotech.com

Tech support:

support@everestbiotech.com

Tel: 888-320-4628 (toll-free)

Fax: 888-841-9041

www.everestbiotech.com

**Research Use Only. Not for
diagnostic or therapeutic use.**

EB09445 - Goat Anti-LMP7 Antibody

Size: 100µg specific antibody in 200µl



Target Protein

Principal Names: PSMB8, proteasome (prosome, macropain) subunit, beta type, 8 (large multifunctional peptidase 7), D6S216, D6S216E, LMP7, MGC1491, PSMB5i, RING10, beta5i, OTTHUMP00000029420, OTTHUMP00000029421, OTTHUMP00000062981, low molecular weight protein 7, macropain subunit C13, multicatalytic endopeptidase complex subunit C13, protease component C13, proteasome (prosome, macropain) subunit beta type 8 (large multifunctional protease 7), proteasome beta 8 subunit, proteasome catalytic subunit 3i, proteasome subunit Y2, proteasome subunit beta 5i, proteasome-related gene 7

Official Symbol: PSMB8

Accession Number(s): NP_004150.1; NP_683720.2

Human GeneID(s): [5696](#)

Non-Human GeneID(s): 16913 (mouse), 24968 (rat)

Important Comments: This antibody is expected to recognize both reported isoforms (NP_004150.1; NP_683720.2).

Immunogen

Peptide with sequence C-DVSDLLHQYREANQ, from the C Terminus of the protein sequence according to NP_004150.1; NP_683720.2.

Please note the [peptide](#) is available for sale.

Purification and Storage

Purified from goat serum by ammonium sulphate precipitation followed by antigen affinity chromatography using the immunizing peptide.

Supplied at 0.5 mg/ml in Tris saline, 0.02% sodium azide, pH7.3 with 0.5% bovine serum albumin.

Aliquot and store at -20°C. Minimize freezing and thawing.

Applications Tested

Peptide ELISA: antibody detection limit dilution 1:8000.

Western blot: Approx 22kDa band observed in Human Liver, Lung and Lymph Node lysates (calculated MW of 29.8kDa according to precursor NP_004150.1). The observed molecular weight corresponds to earlier findings in literature with different antibodies (Schwarz et al, J Immunol. 2000 Jul 15;165(2):768-78. PMID: 10878350. Recommended concentration: 0.01-0.03µg/ml. Primary incubation was 1 hour.

IHC: Paraffin embedded Human Spleen. Recommended concentration: 3.75µg/ml.

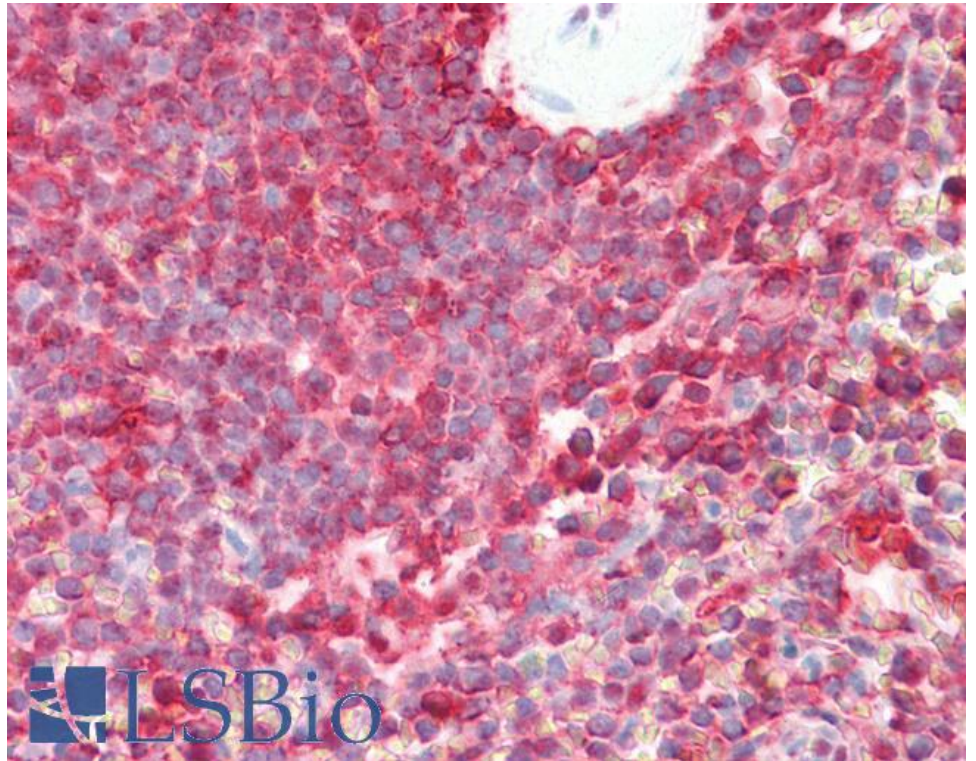
Species Reactivity

Tested: Human

Expected from sequence similarity: Human, Mouse, Rat, Dog, Pig, Cow



EB09445 (0.01µg/ml) staining of Human Liver lysate (35µg protein in RIPA buffer). Detected by chemiluminescence.



EB09445 (3.75µg/ml) staining of paraffin embedded Human Spleen. Steamed antigen retrieval with citrate buffer pH 6, AP-staining.