



SZABO SCANDIC

Part of Europa Biosite

Produktinformation



Forschungsprodukte & Biochemikalien



Zellkultur & Verbrauchsmaterial



Diagnostik & molekulare Diagnostik



Laborgeräte & Service

Weitere Information auf den folgenden Seiten!
See the following pages for more information!



Lieferung & Zahlungsart

siehe unsere [Liefer- und Versandbedingungen](#)

Zuschläge

- Mindermengenzuschlag
- Trockeneiszuschlag
- Gefahrgutzuschlag
- Expressversand

SZABO-SCANDIC HandelsgmbH

Quellenstraße 110, A-1100 Wien

T. +43(0)1 489 3961-0

F. +43(0)1 489 3961-7

mail@szabo-scandic.com

www.szabo-scandic.com

[linkedin.com/company/szaboscandic](https://www.linkedin.com/company/szaboscandic) 



UK Office

Everest Biotech Ltd

Cherwell Innovation Centre
77 Heyford Park
Upper Heyford
Oxfordshire
OX25 5HD
UK

Enquiries:

info@everestbiotech.com

Sales:

sales@everestbiotech.com

Tech support:

support@everestbiotech.com

Tel: +44 (0)1869 238326

Fax: +44 (0)1869 238327

US Office

Everest Biotech c/o Abcore

405 Maple Street, Suite A106
Ramona,
CA 92065
USA

Inquiries:

info@everestbiotech.com

Sales:

usasales@everestbiotech.com

Tech support:

support@everestbiotech.com

Tel: 888-320-4628 (toll-free)

Fax: 888-841-9041

www.everestbiotech.com

**Research Use Only. Not for
diagnostic or therapeutic use.**

EB09535 - Goat Anti-EDG8 / SPPR1 Antibody

Size: 100µg specific antibody in 200µl



Target Protein

Principal Names: S1PR5, sphingosine-1-phosphate receptor 5, EDG8, Edg-8, S1P5, SPPR-1, SPPR-2, endothelial differentiation, sphingolipid G-protein-coupled receptor, 8, sphingosine 1-phosphate receptor 5, sphingosine 1-phosphate receptor Edg-8

Official Symbol: S1PR5

Accession Number(s): NP_110387.1

Human GeneID(s): [53637](#)

Immunogen

Peptide with sequence C-SGSERSSPQRDGLD, from the internal region (near C Terminus) of the protein sequence according to NP_110387.1.

Please note the [peptide](#) is available for sale.

Purification and Storage

Purified from goat serum by ammonium sulphate precipitation followed by antigen affinity chromatography using the immunizing peptide.

Supplied at 0.5 mg/ml in Tris saline, 0.02% sodium azide, pH7.3 with 0.5% bovine serum albumin.

Aliquot and store at -20°C. Minimize freezing and thawing.

Applications Tested

Peptide ELISA: antibody detection limit dilution 1:2000.

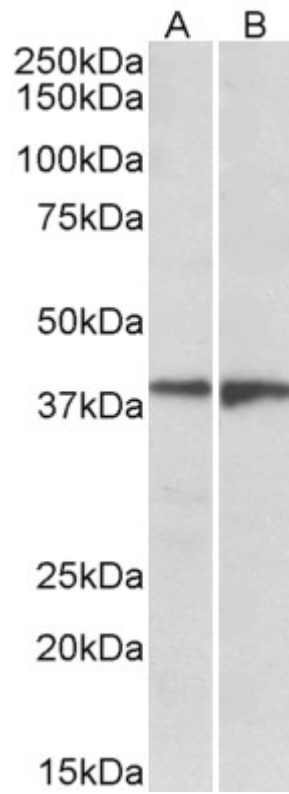
Western blot: Approx 38kDa band observed in Human Brain (Frontal Cortex and Amygdala) lysates (calculated MW of 41.8kDa according to NP_110387.1).

Recommended concentration: 1-3µg/ml.

Species Reactivity

Tested: Human

Expected from sequence similarity: Human, Pig, Cow



EB09535 (1 μ g/ml) staining of Human Frontal Cortex (A) and Amygdala (B) lysates (35 μ g protein in RIPA buffer).
Primary incubation was 1 hour. Detected by chemiluminescence.