



# SZABO SCANDIC

Part of Europa Biosite

## Produktinformation



Forschungsprodukte & Biochemikalien



Zellkultur & Verbrauchsmaterial



Diagnostik & molekulare Diagnostik



Laborgeräte & Service

Weitere Information auf den folgenden Seiten!  
See the following pages for more information!



### Lieferung & Zahlungsart

siehe unsere [Liefer- und Versandbedingungen](#)

### Zuschläge

- Mindermengenzuschlag
- Trockeneiszuschlag
- Gefahrgutzuschlag
- Expressversand

### SZABO-SCANDIC HandelsgmbH

Quellenstraße 110, A-1100 Wien

T. +43(0)1 489 3961-0

F. +43(0)1 489 3961-7

[mail@szabo-scandic.com](mailto:mail@szabo-scandic.com)

[www.szabo-scandic.com](http://www.szabo-scandic.com)

[linkedin.com/company/szaboscandic](https://www.linkedin.com/company/szaboscandic) 



## UK Office

### Everest Biotech Ltd

Cherwell Innovation Centre  
77 Heyford Park  
Upper Heyford  
Oxfordshire  
OX25 5HD  
UK

Enquiries:

[info@everestbiotech.com](mailto:info@everestbiotech.com)

Sales:

[sales@everestbiotech.com](mailto:sales@everestbiotech.com)

Tech support:

[support@everestbiotech.com](mailto:support@everestbiotech.com)

Tel: +44 (0)1869 238326

Fax: +44 (0)1869 238327

## US Office

### Everest Biotech c/o Abcore

405 Maple Street, Suite A106  
Ramona,  
CA 92065  
USA

Inquiries:

[info@everestbiotech.com](mailto:info@everestbiotech.com)

Sales:

[usasales@everestbiotech.com](mailto:usasales@everestbiotech.com)

Tech support:

[support@everestbiotech.com](mailto:support@everestbiotech.com)

Tel: 888-320-4628 (toll-free)

Fax: 888-841-9041

[www.everestbiotech.com](http://www.everestbiotech.com)

**Research Use Only. Not for  
diagnostic or therapeutic use.**

## EB09590 - Goat Anti-eIF5A Antibody

Size: 100µg specific antibody in 200µl



### Target Protein

**Principal Names:** EIF5A, eukaryotic translation initiation factor 5A, EIF-5A, EIF5A1, MGC104255, MGC99547, eIF5AI, OTTHUMP00000128384, uORF A

**Official Symbol:** EIF5A

**Accession Number(s):** NP\_001137232.1

**Human GeneID(s):** [1984](#)

**Important Comments:** Reported variants NP\_001137233.1, NP\_001961.1 and NP\_001137234.1 represent identical protein:

### Immunogen

Peptide with sequence C-RPPHRASFLKRLESK, from the internal region (near N Terminus) of the protein sequence according to NP\_001137232.1.

Please note the [peptide](#) is available for sale.

### Purification and Storage

Purified from goat serum by ammonium sulphate precipitation followed by antigen affinity chromatography using the immunizing peptide.

Supplied at 0.5 mg/ml in Tris saline, 0.02% sodium azide, pH7.3 with 0.5% bovine serum albumin.

Aliquot and store at -20°C. Minimize freezing and thawing.

### Applications Tested

**Peptide ELISA:** antibody detection limit dilution 1:128000.

**Western blot:** Approx 20kDa band observed in MOLT4 lysates (calculated MW of 20.2kDa according to NP\_001137232.1). Recommended concentration: 1-3µg/ml. Primary incubation was 1 hour. This antibody has been successfully used in WB on Human, PMID: 27414022 and 33459432.

**IHC:** Paraffin embedded Human Spleen, Tonsil and Vessel. Recommended concentration: 3.75µg/ml.

### Species Reactivity

**Tested:** Human

**Expected from sequence similarity:** Human

### Specific References

**This antibody has been successfully used in Western blot on Human:**

Karina D Pereira, Leticia Tamborlin, Tanes I de Lima, Silvio R Consonni, Leonardo R Silveira, Augusto D Luchessi

Alternative human eIF5A protein isoform plays a critical role in mitochondria  
J Cell Biochem. 2021 Jan 18.

PMID: 33459432

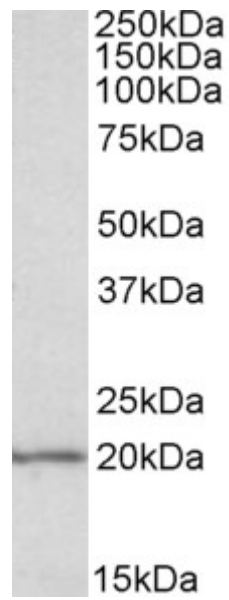
**This antibody has been successfully used in Western blot on Human:**

Pereira KD, Tamborlin L, Meneguello L, de Proença AR, Almeida IC, Lourenço RF, Luchessi AD.

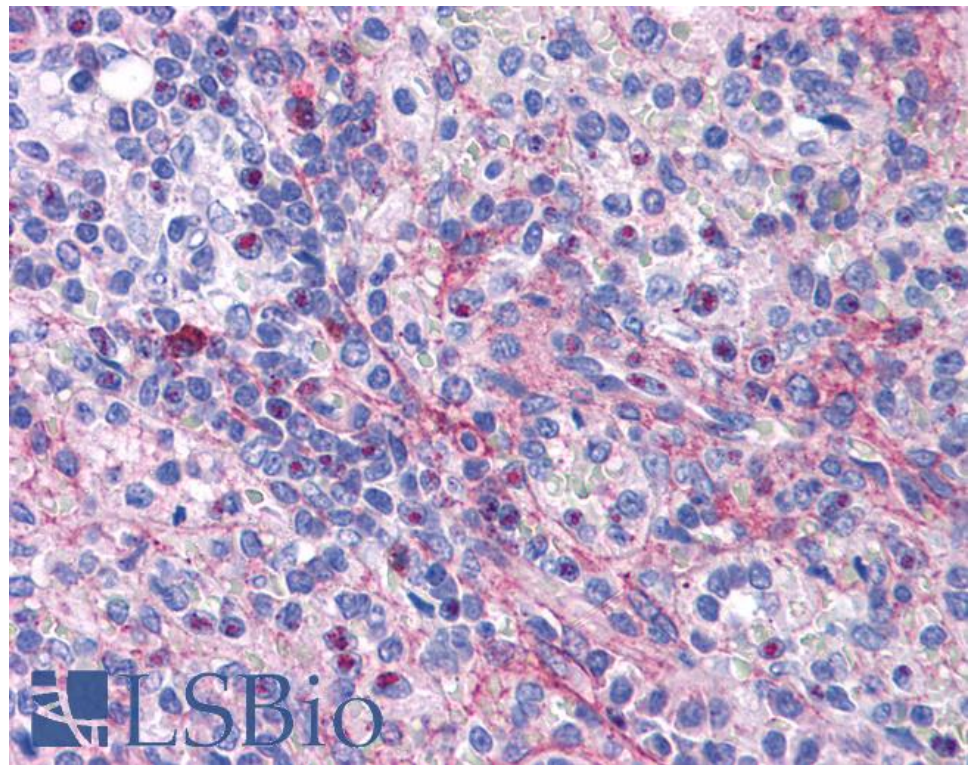
Alternative Start Codon Connects eIF5A to Mitochondria.

J Cell Physiol. 2016 Dec;231(12):2682-9.

PMID: 27414022

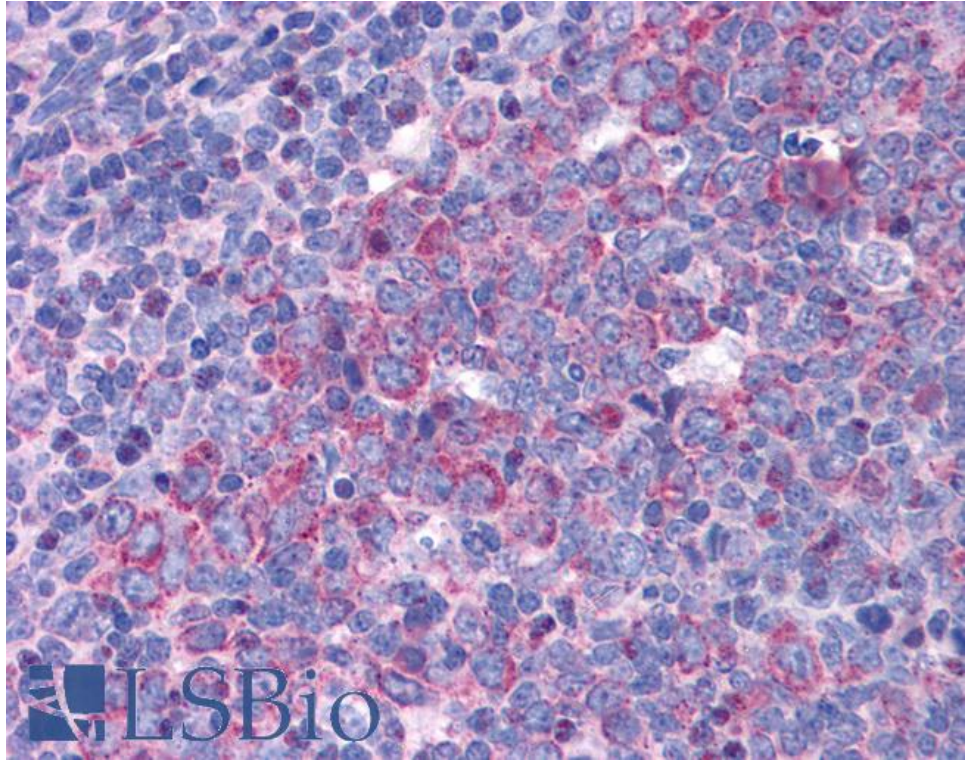


EB09590 (0.1 $\mu$ g/ml) staining of MOLT4 lysate (35 $\mu$ g protein in RIPA buffer). Detected by chemiluminescence.

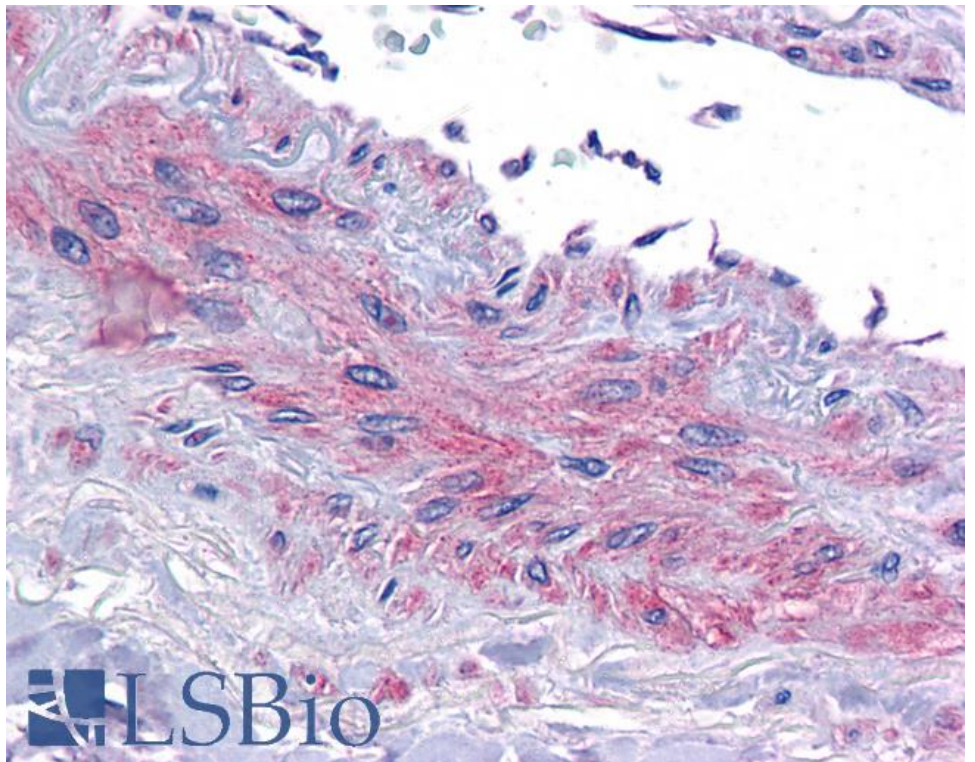


EB09590 (3.75 $\mu$ g/ml) staining of paraffin embedded Human Spleen. Steamed antigen retrieval with citrate buffer pH 6, AP-staining.





EB09590 (3.75µg/ml) staining of paraffin embedded Human Tonsil. Steamed antigen retrieval with citrate buffer pH 6, AP-staining.



EB09590 (3.75µg/ml) staining of paraffin embedded Human Vessel. Steamed antigen retrieval with citrate buffer pH 6, AP-staining.