



# SZABO SCANDIC

Part of Europa Biosite

## Produktinformation



Forschungsprodukte & Biochemikalien



Zellkultur & Verbrauchsmaterial



Diagnostik & molekulare Diagnostik



Laborgeräte & Service

Weitere Information auf den folgenden Seiten!  
See the following pages for more information!



### Lieferung & Zahlungsart

siehe unsere [Liefer- und Versandbedingungen](#)

### Zuschläge

- Mindermengenzuschlag
- Trockeneiszuschlag
- Gefahrgutzuschlag
- Expressversand

### SZABO-SCANDIC HandelsgmbH

Quellenstraße 110, A-1100 Wien

T. +43(0)1 489 3961-0

F. +43(0)1 489 3961-7

[mail@szabo-scandic.com](mailto:mail@szabo-scandic.com)

[www.szabo-scandic.com](http://www.szabo-scandic.com)

[linkedin.com/company/szaboscandic](https://www.linkedin.com/company/szaboscandic) 



## UK Office

### Everest Biotech Ltd

Cherwell Innovation Centre  
77 Heyford Park  
Upper Heyford  
Oxfordshire  
OX25 5HD  
UK

Enquiries:

[info@everestbiotech.com](mailto:info@everestbiotech.com)

Sales:

[sales@everestbiotech.com](mailto:sales@everestbiotech.com)

Tech support:

[support@everestbiotech.com](mailto:support@everestbiotech.com)

Tel: +44 (0)1869 238326

Fax: +44 (0)1869 238327

## US Office

### Everest Biotech c/o Abcore

405 Maple Street, Suite A106  
Ramona,  
CA 92065  
USA

Inquiries:

[info@everestbiotech.com](mailto:info@everestbiotech.com)

Sales:

[usasales@everestbiotech.com](mailto:usasales@everestbiotech.com)

Tech support:

[support@everestbiotech.com](mailto:support@everestbiotech.com)

Tel: 888-320-4628 (toll-free)

Fax: 888-841-9041

[www.everestbiotech.com](http://www.everestbiotech.com)

**Research Use Only. Not for  
diagnostic or therapeutic use.**

## EB09642 - Goat Anti-TET2 Antibody

Size: 100µg specific antibody in 200µl



### Target Protein

**Principal Names:** TET2, tet oncogene family member 2, FLJ20032, KIAA1546, MGC125715, OTTHUMP00000161869

**Official Symbol:** TET2

**Accession Number(s):** NP\_001120680.1; NP\_060098.3

**Human GeneID(s):** [54790](#)

**Non-Human GeneID(s):** 214133 (mouse)

**Important Comments:** This antibody is expected to recognize both reported isoforms (NP\_001120680.1; NP\_060098.3).

### Immunogen

Peptide with sequence C-PPHQSNNDDQREGSF, from the internal region of the protein sequence according to NP\_001120680.1; NP\_060098.3.

Please note the [peptide](#) is available for sale.

### Purification and Storage

Purified from goat serum by ammonium sulphate precipitation followed by antigen affinity chromatography using the immunizing peptide.

Supplied at 0.5 mg/ml in Tris saline, 0.02% sodium azide, pH7.3 with 0.5% bovine serum albumin.

Aliquot and store at -20°C. Minimize freezing and thawing.

### Applications Tested

**Peptide ELISA:** antibody detection limit dilution 1:16000.

**IHC:** In paraffin embedded Human Spleen shows nuclear staining in select splenocytes. Recommended concentration: 2-6µg/ml.

**Flow Cytometry:** Flow cytometric analysis of A431 cells. Recommended concentration: 10ug/ml.

### Species Reactivity

**Tested:** Human

**Expected from sequence similarity:** Human, Mouse, Dog

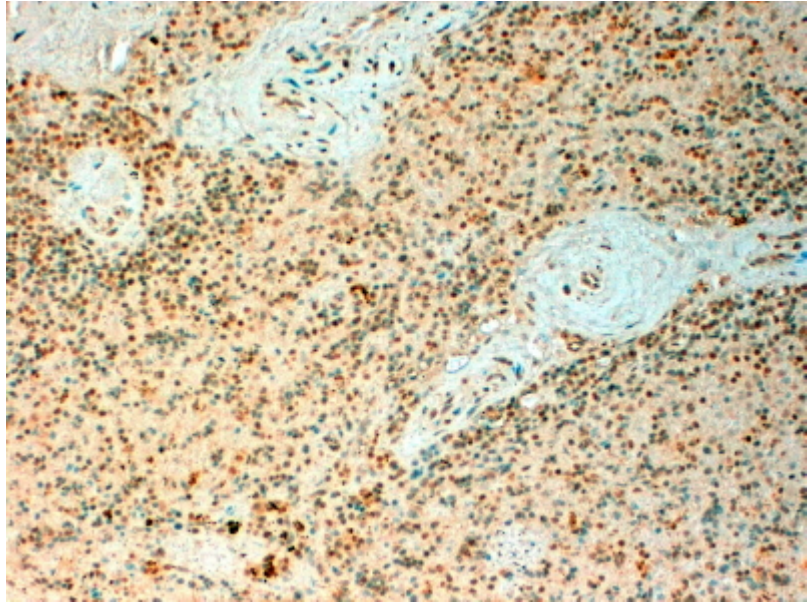
### Specific References

**This antibody (previous batch) has been successfully used in IHC on Mouse:**

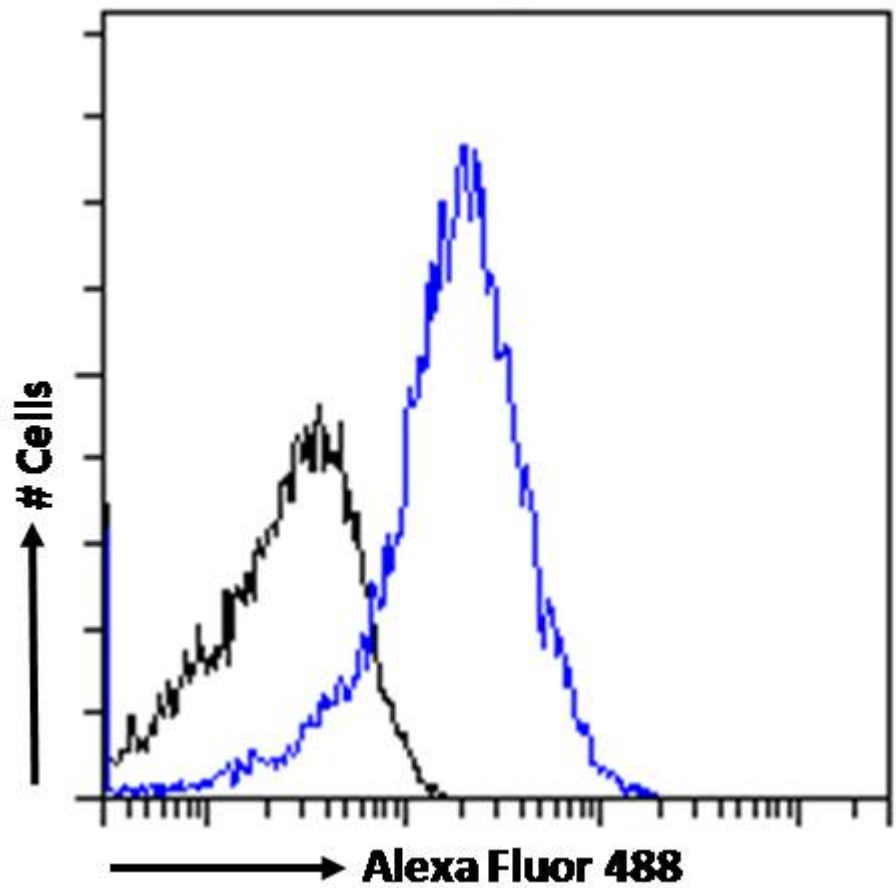
Rakoczy J, Padmanabhan N, Krzak AM, Kieckbusch J, Cindrova-Davies T, Watson ED  
Dynamic expression of TET1, TET2,  
and TET3 dioxygenases in mouse and human placenta throughout gestation.  
Placenta. 2017 Nov;59:46-56.  
PMID: 29108636

**This antibody (previous batch) has been successfully used in IHC on Human:**

Orr BA, Haffner MC, Nelson WG, Yegnasubramanian S, Eberhart CG.  
Decreased 5-hydroxymethylcytosine is associated with neural progenitor phenotype in  
normal brain and shorter survival in malignant glioma.  
PLoS One. 2012;7(7):e41036. 2012 Jul 19  
PMID: 22829908



EB09642 (4 $\mu$ g/ml) staining of paraffin embedded Human Spleen. Steamed antigen retrieval with citrate buffer pH 6, HRP-staining.



EB09642 Flow cytometric analysis of paraformaldehyde fixed A431 cells (blue line), permeabilized with 0.5% Triton. Primary incubation 1hr (10 $\mu$ g/ml) followed by Alexa Fluor 488 secondary antibody (1 $\mu$ g/ml). IgG control: Unimmunized goat IgG (black line) followed by Alexa Fluor 488 secondary antibody.