



SZABO SCANDIC

Part of Europa Biosite

Produktinformation



Forschungsprodukte & Biochemikalien



Zellkultur & Verbrauchsmaterial



Diagnostik & molekulare Diagnostik



Laborgeräte & Service

Weitere Information auf den folgenden Seiten!
See the following pages for more information!



Lieferung & Zahlungsart

siehe unsere [Liefer- und Versandbedingungen](#)

Zuschläge

- Mindermengenzuschlag
- Trockeneiszuschlag
- Gefahrgutzuschlag
- Expressversand

SZABO-SCANDIC HandelsgmbH

Quellenstraße 110, A-1100 Wien

T. +43(0)1 489 3961-0

F. +43(0)1 489 3961-7

mail@szabo-scandic.com

www.szabo-scandic.com

[linkedin.com/company/szaboscandic](https://www.linkedin.com/company/szaboscandic) 



UK Office

Everest Biotech Ltd

Cherwell Innovation Centre
77 Heyford Park
Upper Heyford
Oxfordshire
OX25 5HD
UK

Enquiries:

info@everestbiotech.com

Sales:

sales@everestbiotech.com

Tech support:

support@everestbiotech.com

Tel: +44 (0)1869 238326

Fax: +44 (0)1869 238327

US Office

Everest Biotech c/o Abcore

405 Maple Street, Suite A106
Ramona,
CA 92065
USA

Inquiries:

info@everestbiotech.com

Sales:

usasales@everestbiotech.com

Tech support:

support@everestbiotech.com

Tel: 888-320-4628 (toll-free)

Fax: 888-841-9041

www.everestbiotech.com

**Research Use Only. Not for
diagnostic or therapeutic use.**

EB09679 - Goat Anti-GAL Antibody

Size: 100µg specific antibody in 200µl



Target Protein

Principal Names: GAL, galanin prepropeptide, GALN, GLNN, GMAP, MGC40167, galanin, galanin-message-associated peptide, galanin-related peptide

Official Symbol: GAL

Accession Number(s): NP_057057.2

Human GeneID(s): [51083](#)

Non-Human GeneID(s): 14419 (mouse), 29141 (rat)

Immunogen

Peptide with sequence C-HRSFSDKNGLTSK, from the internal region of the protein sequence according to NP_057057.2.

Please note the [peptide](#) is available for sale.

Purification and Storage

Purified from goat serum by ammonium sulphate precipitation followed by antigen affinity chromatography using the immunizing peptide.

Supplied at 0.5 mg/ml in Tris saline, 0.02% sodium azide, pH7.3 with 0.5% bovine serum albumin.

Aliquot and store at -20°C. Minimize freezing and thawing.

Applications Tested

Peptide ELISA: antibody detection limit dilution 1:32000.

Western blot: Approx 15kDa band observed in Rat Colon lysates, approx. 16kDa in Mouse Small intestine and Stomach, and Rat Duodenum lysates and approx.. 17kDa in Mouse Brain lysates (calculated MW of 13.5kDa according to Mouse NP_034383.1 and Rat NP_150240.1). Recommended concentration: 0.5-2µg/ml. Primary incubation 1 hour at room temperature.

IHC: Paraffin embedded Human Small Intestine. Recommended concentration: 7-8µg/ml.

Species Reactivity

Tested: Human, Mouse, Rat

Expected from sequence similarity: Human, Mouse, Rat, Cow

Specific Reference

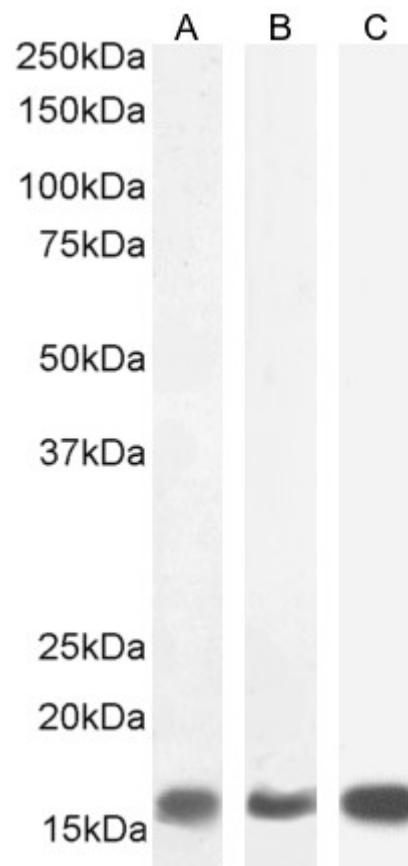
This antibody (previous batch) has been successfully used in IHC on Human:

Skrapits K, Borsay BÅ, Herczeg L, Ciofi P, Liposits Z, Hrabovszky E.

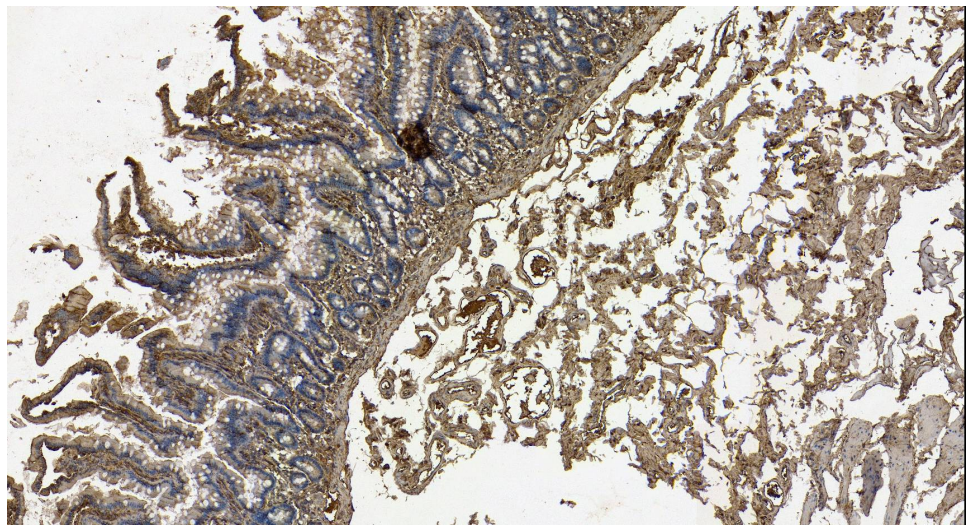
Neuropeptide co-expression in hypothalamic kisspeptin neurons of laboratory animals and the human.

Front Neurosci. 2015 Feb 10;9:29.

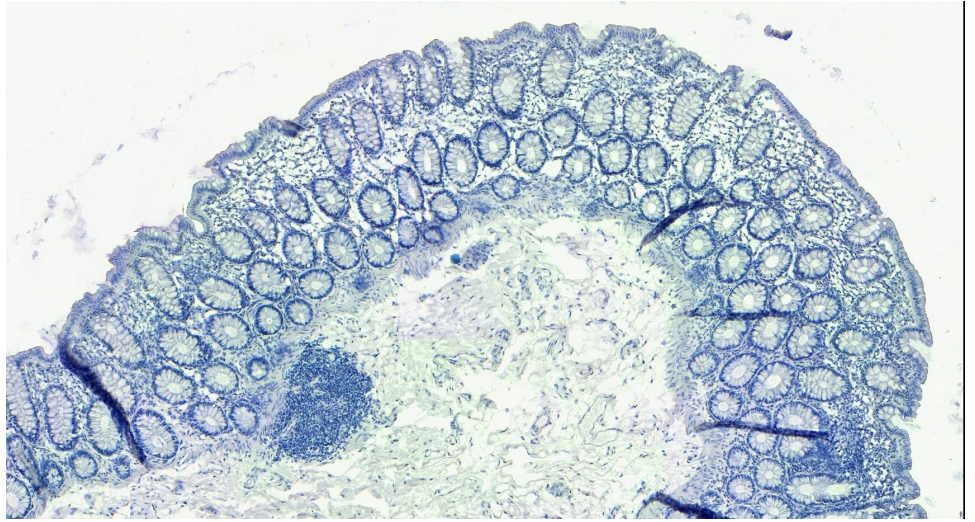
PMID: 25713511



EB09679 (1 μ g/ml) staining of Mouse Brain (A) Small Intestine (B) and Stomach (C) lysate (35 μ g protein in RIPA buffer). Detected by chemiluminescence.



EB09679 (8 μ g/ml) staining of paraffin embedded Human Small Intestine. Heat induced antigen retrieval with citrate buffer pH 6, HRP-staining.



EB09679 Negative Control showing staining of paraffin embedded Human Small Intestine, with no primary antibody.