



# SZABO SCANDIC

Part of Europa Biosite

## Produktinformation



Forschungsprodukte & Biochemikalien



Zellkultur & Verbrauchsmaterial



Diagnostik & molekulare Diagnostik



Laborgeräte & Service

Weitere Information auf den folgenden Seiten!  
See the following pages for more information!



### Lieferung & Zahlungsart

siehe unsere [Liefer- und Versandbedingungen](#)

### Zuschläge

- Mindermengenzuschlag
- Trockeneiszuschlag
- Gefahrgutzuschlag
- Expressversand

### SZABO-SCANDIC HandelsgmbH

Quellenstraße 110, A-1100 Wien

T. +43(0)1 489 3961-0

F. +43(0)1 489 3961-7

[mail@szabo-scandic.com](mailto:mail@szabo-scandic.com)

[www.szabo-scandic.com](http://www.szabo-scandic.com)

[linkedin.com/company/szaboscandic](https://www.linkedin.com/company/szaboscandic) 



## UK Office

### Everest Biotech Ltd

Cherwell Innovation Centre  
77 Heyford Park  
Upper Heyford  
Oxfordshire  
OX25 5HD  
UK

Enquiries:

[info@everestbiotech.com](mailto:info@everestbiotech.com)

Sales:

[sales@everestbiotech.com](mailto:sales@everestbiotech.com)

Tech support:

[support@everestbiotech.com](mailto:support@everestbiotech.com)

Tel: +44 (0)1869 238326

Fax: +44 (0)1869 238327

## US Office

### Everest Biotech c/o Abcore

405 Maple Street, Suite A106  
Ramona,  
CA 92065  
USA

Inquiries:

[info@everestbiotech.com](mailto:info@everestbiotech.com)

Sales:

[usasales@everestbiotech.com](mailto:usasales@everestbiotech.com)

Tech support:

[support@everestbiotech.com](mailto:support@everestbiotech.com)

Tel: 888-320-4628 (toll-free)

Fax: 888-841-9041

[www.everestbiotech.com](http://www.everestbiotech.com)

**Research Use Only. Not for  
diagnostic or therapeutic use.**

## EB09715 - Goat Anti-PRDM1 / MEL1 Antibody

Size: 100µg specific antibody in 200µl



### Target Protein

**Principal Names:** PRDM1, PR domain containing 1, with ZNF domain, BLIMP1, MGC118922, MGC118923, MGC118924, MGC118925, PRDI-BF1, B-lymphocyte-induced maturation protein 1, OTTHUMP00000016918, PR-domain zinc finger protein 1, PRDI-binding factor-1, beta-interferon gene positive-regulatory domain I binding factor, positive regulatory domain I-binding factor 1

**Official Symbol:** PRDM1

**Accession Number(s):** NP\_001189.2; NP\_878911.1

**Human GeneID(s):** [639](#)

**Non-Human GeneID(s):** 12142 (mouse), 309871 (rat)

**Important Comments:** This antibody is expected to recognize both reported isoforms (NP\_001189.2; NP\_878911.1).

### Immunogen

Peptide with sequence C-DISDNADRLEDVED, from the internal region of the protein sequence according to NP\_001189.2; NP\_878911.1.

Please note the [peptide](#) is available for sale.

### Purification and Storage

Purified from goat serum by ammonium sulphate precipitation followed by antigen affinity chromatography using the immunizing peptide.

Supplied at 0.5 mg/ml in Tris saline, 0.02% sodium azide, pH7.3 with 0.5% bovine serum albumin.

Aliquot and store at -20°C. Minimize freezing and thawing.

### Applications Tested

**Peptide ELISA:** antibody detection limit dilution 1:1000.

**Western blot:** Approx 90kDa band observed in lysates of cell lines A431 and Nuclear K562, and approx. 100kDa in lysates of cell line K562. An additional faint band of approx 70kDa was also seen in some A431 and K562 lysates (calculated MW of 91.8kDa according to NP\_001189.2 isoform 1 and 76.8kD according to NP\_878911.1 isoform 2). Recommended concentration: 0.1-2g/ml. Primary incubation 1 hour at room temperature.

**IHC:** Paraffin embedded Human Testis. Recommended concentration: 6µg/ml.

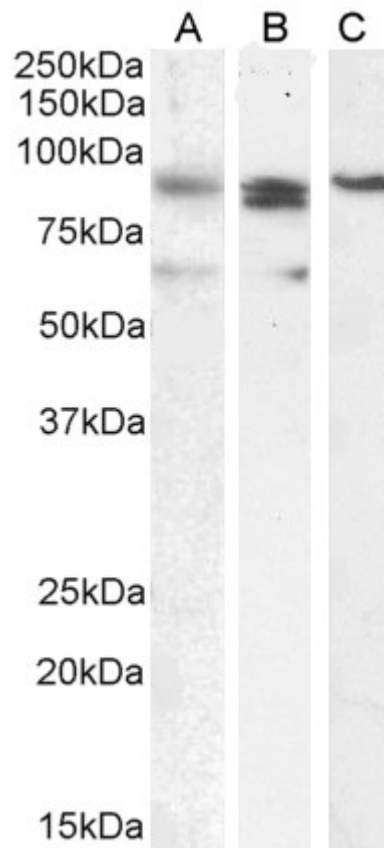
**Immunofluorescence:** Strong expression of the protein seen in the nuclei of HeLa cells. Recommended concentration: 10µg/ml.

**Flow Cytometry:** Flow cytometric analysis of A431 cells. Recommended concentration: 10ug/ml.

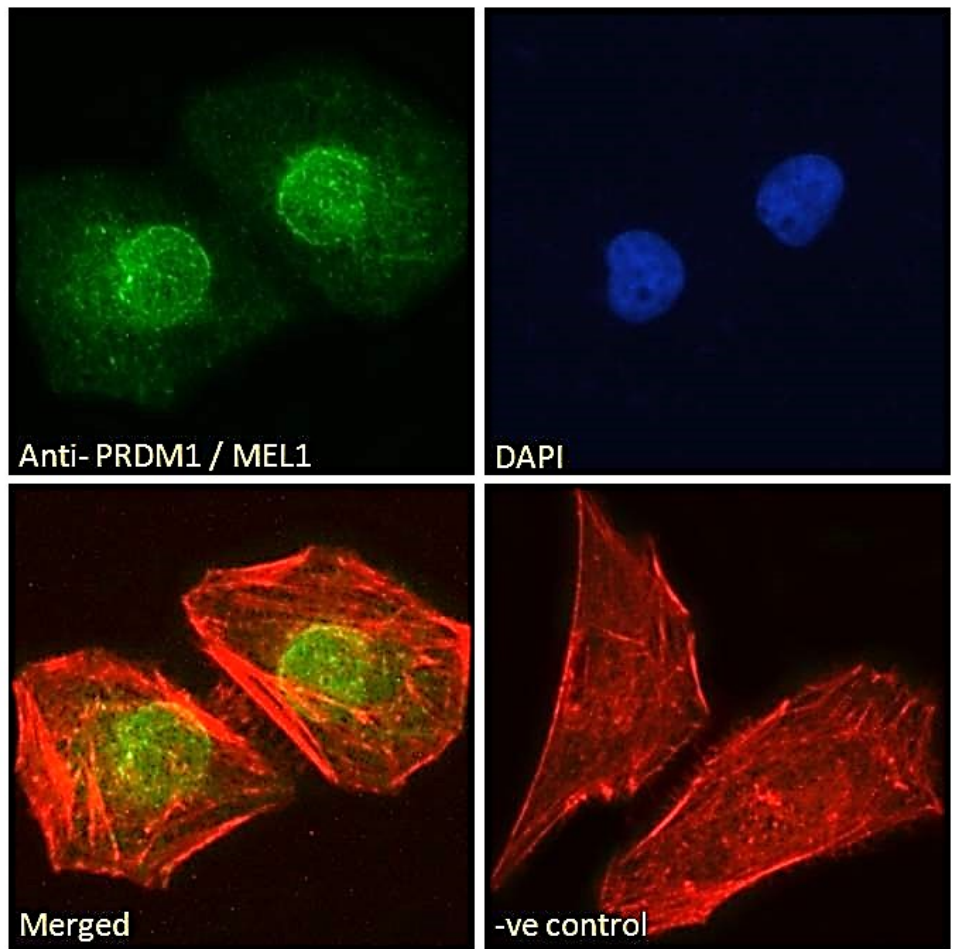
### Species Reactivity

**Tested:** Human

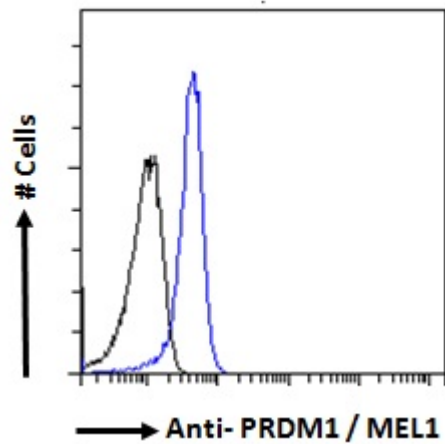
**Expected from sequence similarity:** Human, Mouse, Rat, Dog, Cow, Pig



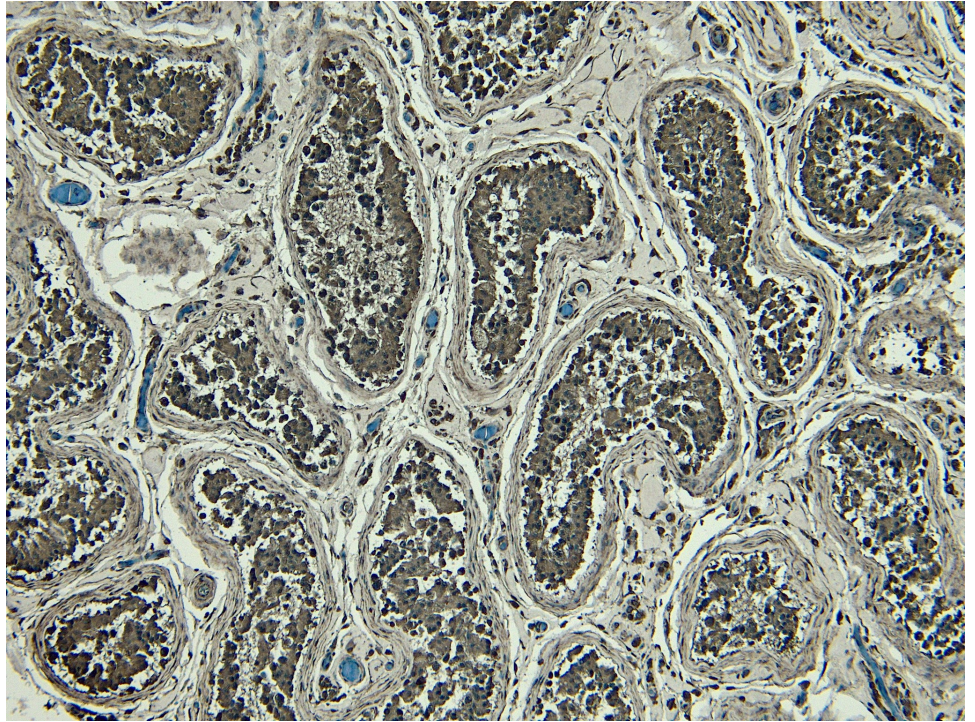
EB09715 (0.1 $\mu$ g/ml) staining of A431 (A), (2 $\mu$ g/ml) K562 (B) and (1 $\mu$ g/ml) Nuclear K562 (C) cell lysate (35 $\mu$ g protein in RIPA buffer). Detected by chemiluminescence.



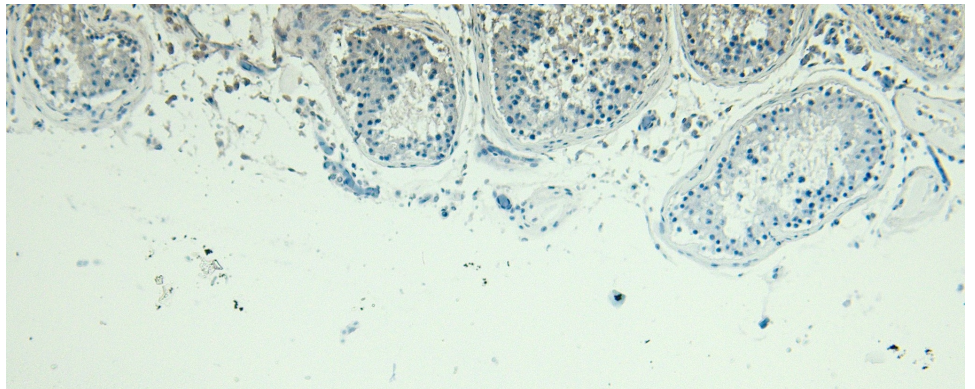
EB09715 Immunofluorescence analysis of paraformaldehyde fixed HeLa cells, permeabilized with 0.15% Triton. Primary incubation 1hr (10ug/ml) followed by Alexa Fluor 488 secondary antibody (2ug/ml), showing nuclear staining. Actin filaments were stained with phalloidin (red) and the nuclear stain is DAPI (blue). Negative control: Unimmunized goat IgG (10ug/ml) followed by Alexa Fluor 488 secondary antibody (2ug/ml).



EB09715 Flow cytometric analysis of paraformaldehyde fixed A431 cells (blue line), permeabilized with 0.5% Triton. Primary incubation 1hr (10ug/ml) followed by Alexa Fluor 488 secondary antibody (1ug/ml). IgG control: Unimmunized goat IgG (black line) followed by Alexa Fluor 488 secondary antibody.



EB09715 (6µg/ml) staining of paraffin embedded Human Testis. Heat induced antigen retrieval with citrate buffer pH 6, HRP-staining.



EB09715 Negative Control showing staining of paraffin embedded Human Testis, with no primary antibody.