



SZABO SCANDIC

Part of Europa Biosite

Produktinformation



Forschungsprodukte & Biochemikalien



Zellkultur & Verbrauchsmaterial



Diagnostik & molekulare Diagnostik



Laborgeräte & Service

Weitere Information auf den folgenden Seiten!
See the following pages for more information!



Lieferung & Zahlungsart

siehe unsere [Liefer- und Versandbedingungen](#)

Zuschläge

- Mindermengenzuschlag
- Trockeneiszuschlag
- Gefahrgutzuschlag
- Expressversand

SZABO-SCANDIC HandelsgmbH

Quellenstraße 110, A-1100 Wien

T. +43(0)1 489 3961-0

F. +43(0)1 489 3961-7

mail@szabo-scandic.com

www.szabo-scandic.com

[linkedin.com/company/szaboscandic](https://www.linkedin.com/company/szaboscandic) 



UK Office

Everest Biotech Ltd

Cherwell Innovation Centre
77 Heyford Park
Upper Heyford
Oxfordshire
OX25 5HD
UK

Enquiries:

info@everestbiotech.com

Sales:

sales@everestbiotech.com

Tech support:

support@everestbiotech.com

Tel: +44 (0)1869 238326

Fax: +44 (0)1869 238327

US Office

Everest Biotech c/o Abcore

405 Maple Street, Suite A106
Ramona,
CA 92065
USA

Inquiries:

info@everestbiotech.com

Sales:

usasales@everestbiotech.com

Tech support:

support@everestbiotech.com

Tel: 888-320-4628 (toll-free)

Fax: 888-841-9041

www.everestbiotech.com

**Research Use Only. Not for
diagnostic or therapeutic use.**

EB09738 - Goat Anti-GPI / Neuroleukin (aa81-93) Antibody

Size: 100µg specific antibody in 200µl



Target Protein

Principal Names: GPI, glucose phosphate isomerase, AMF, GNPI, NLK, PGI, SA-36, autocrine motility factor;, glucose-6-phosphate isomerase, hexose monophosphate isomerase, hexosephosphate isomerase;, neuroleukin, oxoisomerase;, phosphoglucose isomerase, phosphohexomutase, phosphohexose isomerase, phosphosaccharomutase;, sperm antigen-36

Official Symbol: GPI

Accession Number(s): NP_000166.2

Human GeneID(s): [2821](#)

Immunogen

Peptide with sequence C-RERMFNGEKINYT, from the internal region (near N Terminus) of the protein sequence according to NP_000166.2.

Please note the [peptide](#) is available for sale.

Purification and Storage

Purified from goat serum by ammonium sulphate precipitation followed by antigen affinity chromatography using the immunizing peptide.

Supplied at 0.5 mg/ml in Tris saline, 0.02% sodium azide, pH7.3 with 0.5% bovine serum albumin.

Aliquot and store at -20°C. Minimize freezing and thawing.

Applications Tested

Peptide ELISA: antibody detection limit dilution 1:128000.

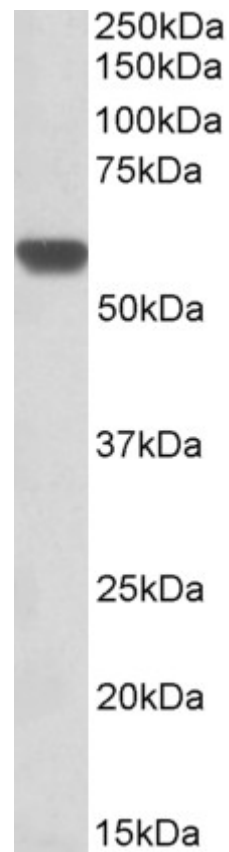
Western blot: Approx 60kDa band observed in Human Heart lysates and approx 55kDa observed in lysates of cell lines HeLa, A431, A549, MCF7, Jurkat and K562 (calculated MW of 63.1kDa according to NP_000166.2). Recommended concentration: 0.1-0.3µg/ml. Primary incubation was 1 hour.

IHC: Paraffin embedded Human Testis, Thyroid and Kidney. Recommended concentration: 3.75µg/ml.

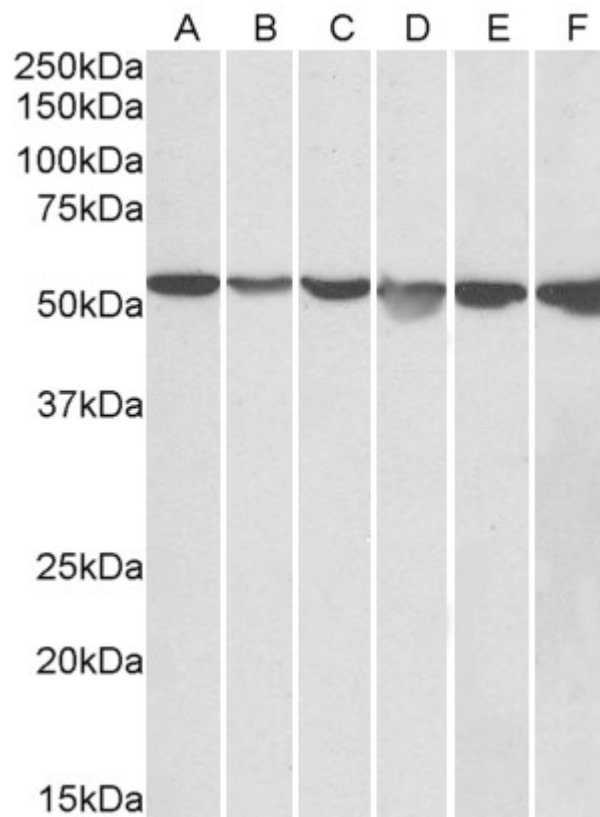
Species Reactivity

Tested: Human

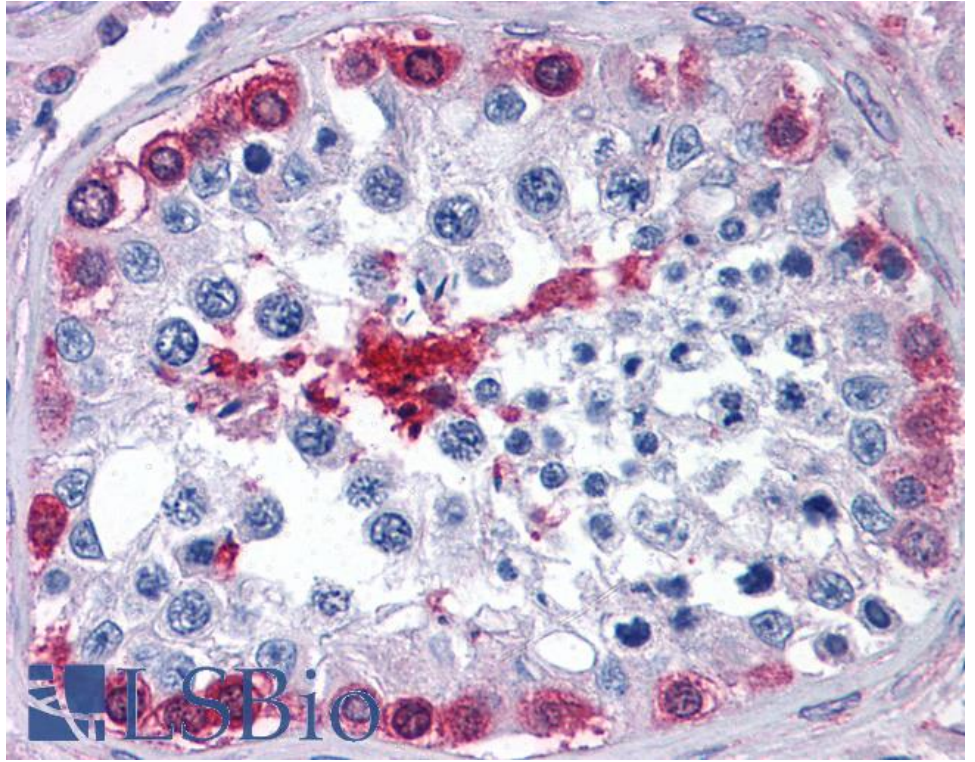
Expected from sequence similarity: Human



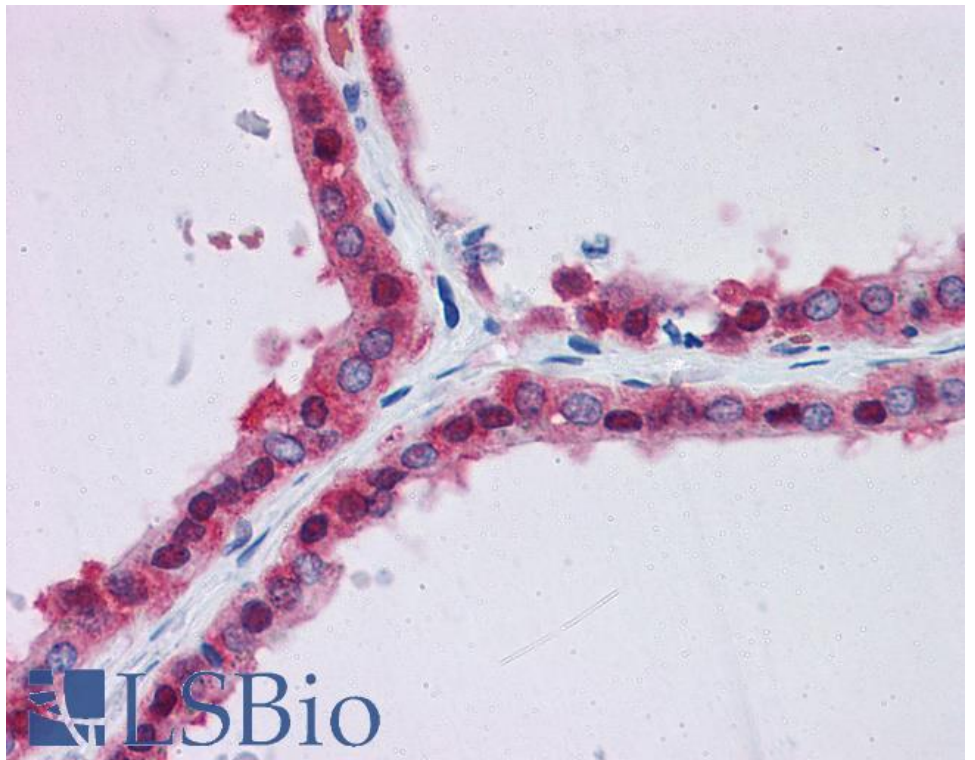
EB09738 (0.3 μ g/ml) staining of Human Heart lysate (35 μ g protein in RIPA buffer). Detected by chemiluminescence.



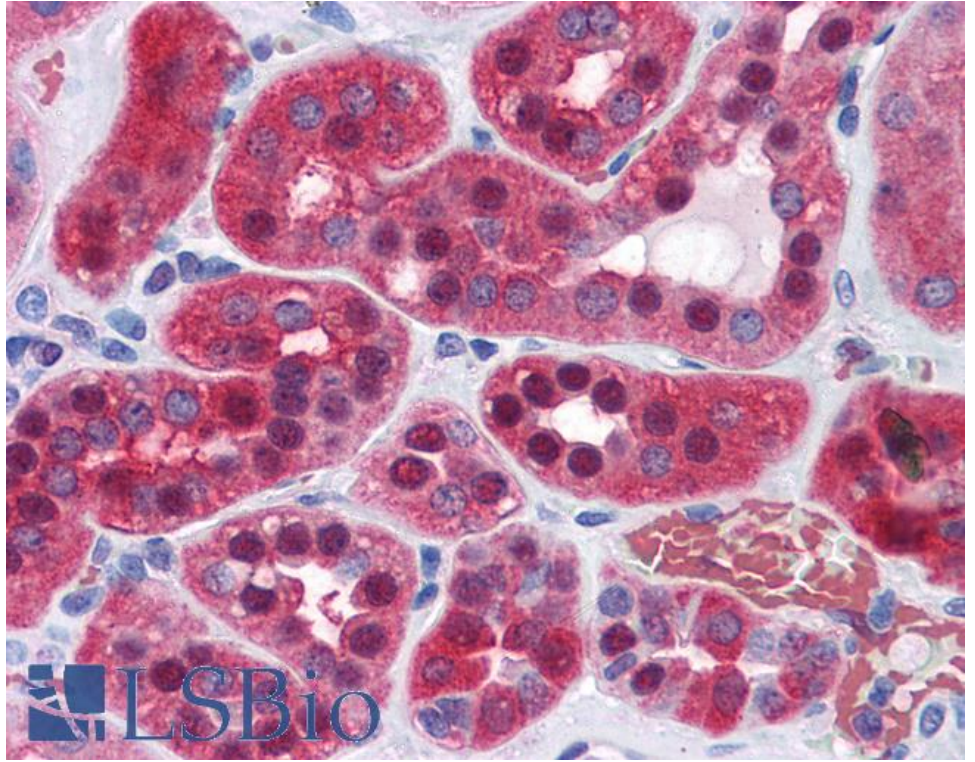
EB09738 (0.05 μ g/ml) staining of HeLa (A), A431 (B), A549 (C), MCF7 (D), Jurkat (E) and K562 (F) lysates (35 μ g protein in RIPA buffer). Detected by chemiluminescence.



EB09738 (3.75µg/ml) staining of paraffin embedded Human Testis. Steamed antigen retrieval with citrate buffer pH 6, AP-staining.



EB09738 (3.75µg/ml) staining of paraffin embedded Human Thyroid. Steamed antigen retrieval with citrate buffer Ph 6, AP-staining.



EB09738 (3.75µg/ml) staining of paraffin embedded Human Kidney. Steamed antigen retrieval with citrate buffer pH 6, AP-staining.