



SZABO SCANDIC

Part of Europa Biosite

Produktinformation



Forschungsprodukte & Biochemikalien



Zellkultur & Verbrauchsmaterial



Diagnostik & molekulare Diagnostik



Laborgeräte & Service

Weitere Information auf den folgenden Seiten!
See the following pages for more information!



Lieferung & Zahlungsart

siehe unsere [Liefer- und Versandbedingungen](#)

Zuschläge

- Mindermengenzuschlag
- Trockeneiszuschlag
- Gefahrgutzuschlag
- Expressversand

SZABO-SCANDIC HandelsgmbH

Quellenstraße 110, A-1100 Wien

T. +43(0)1 489 3961-0

F. +43(0)1 489 3961-7

mail@szabo-scandic.com

www.szabo-scandic.com

[linkedin.com/company/szaboscandic](https://www.linkedin.com/company/szaboscandic) 



UK Office

Everest Biotech Ltd

Cherwell Innovation Centre
77 Heyford Park
Upper Heyford
Oxfordshire
OX25 5HD
UK

Enquiries:

info@everestbiotech.com

Sales:

sales@everestbiotech.com

Tech support:

support@everestbiotech.com

Tel: +44 (0)1869 238326

Fax: +44 (0)1869 238327

US Office

Everest Biotech c/o Abcore

405 Maple Street, Suite A106
Ramona,
CA 92065
USA

Inquiries:

info@everestbiotech.com

Sales:

usasales@everestbiotech.com

Tech support:

support@everestbiotech.com

Tel: 888-320-4628 (toll-free)

Fax: 888-841-9041

www.everestbiotech.com

**Research Use Only. Not for
diagnostic or therapeutic use.**

EB09795 - Goat Anti-TGFBI Antibody

Size: 100µg specific antibody in 200µl



Target Protein

Principal Names: BIGH3, CDB1, CDG2, CDGG1, CSD, CSD1, CSD2, CSD3, EBMD, kerato-epithelin, LCD1, RGD-containing collagen-associated protein, transforming growth factor, beta-induced, 68kDa, TGFBI

Official Symbol: TGFBI

Accession Number(s): NP_000349.1

Human GeneID(s): [7045](#)

Non-Human GeneID(s): 21810 (mouse), 24511 (rat)

Immunogen

Peptide with sequence C-QLYTDRTEKLRPE, from the internal region of the protein sequence according to NP_000349.1.

Please note the [peptide](#) is available for sale.

Purification and Storage

Purified from goat serum by ammonium sulphate precipitation followed by antigen affinity chromatography using the immunizing peptide.

Supplied at 0.5 mg/ml in Tris saline, 0.02% sodium azide, pH7.3 with 0.5% bovine serum albumin.

Aliquot and store at -20°C. Minimize freezing and thawing.

Applications Tested

Peptide ELISA: antibody detection limit dilution 1:32000.

Western blot: Approx 70kDa band observed in Human and Rat Kidney lysates, and approx 75kDa in Human Prostate and Human Colorectal cancer lysates (calculated MW of 74.7kDa according to Human NP_000349.1 and 74.8kDa according to Rat NP_446254.1). Recommended concentration: 0.1-0.3µg/ml. Primary incubation 1 hour at room temperature.

IHC: In paraffin embedded Kidney shows staining of intercalated cells of a collecting tubule. Recommended concentration: 4-6µg/ml. This antibody has been successfully used in IHC on Rat, PMID: 26407577.

Immunofluorescence: Strong expression of the protein seen in the golgi and plasma membrane of HeLa cells. Recommended concentration: 10µg/ml.

Species Reactivity

Tested: Human, Rat

Expected from sequence similarity: Human, Mouse, Rat, Dog

Specific Reference

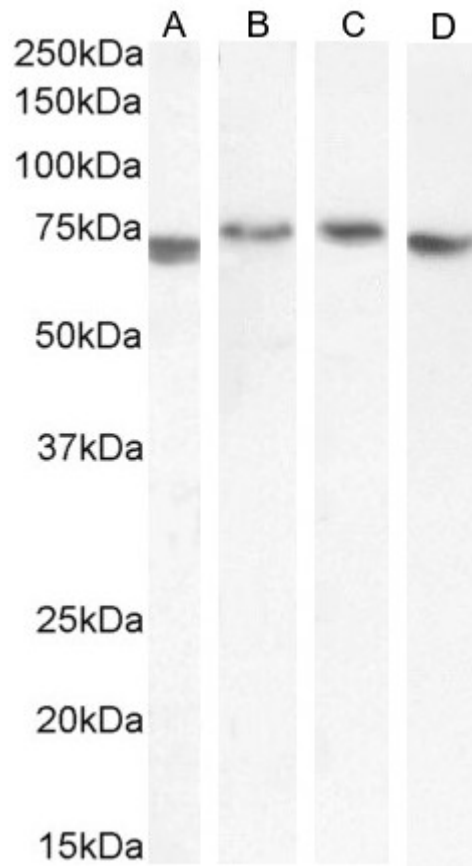
This antibody has been successfully used in IHC on Rat:

Dan Ding, Yimei Du, Zihua Qiu, Sen Yan, Fen Chen, Min Wang, Shijun Yang, Yanzhao Zhou, Xiajun Hu, Yihuan Deng, Shijia Wang, Liangping Wang, Hongrong Zhang, Hailang Wu, Xian Yu, Zihua Zhou, Yuhua Liao & Xiao Chen.

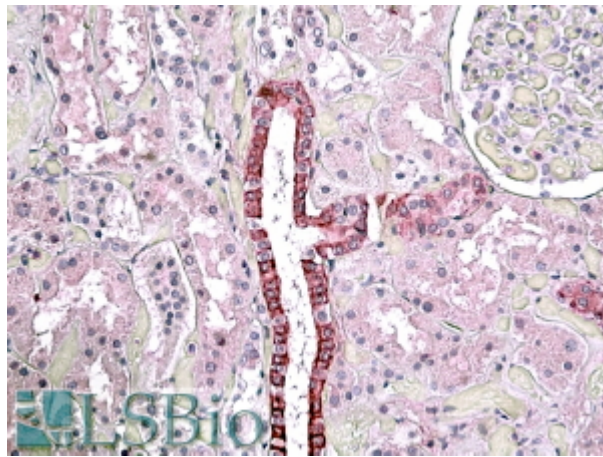
Vaccination against type 1 angiotensin receptor prevents streptozotocin-induced diabetic nephropathy.

J Mol Med (Berl). 2016 Feb;94(2):207-18

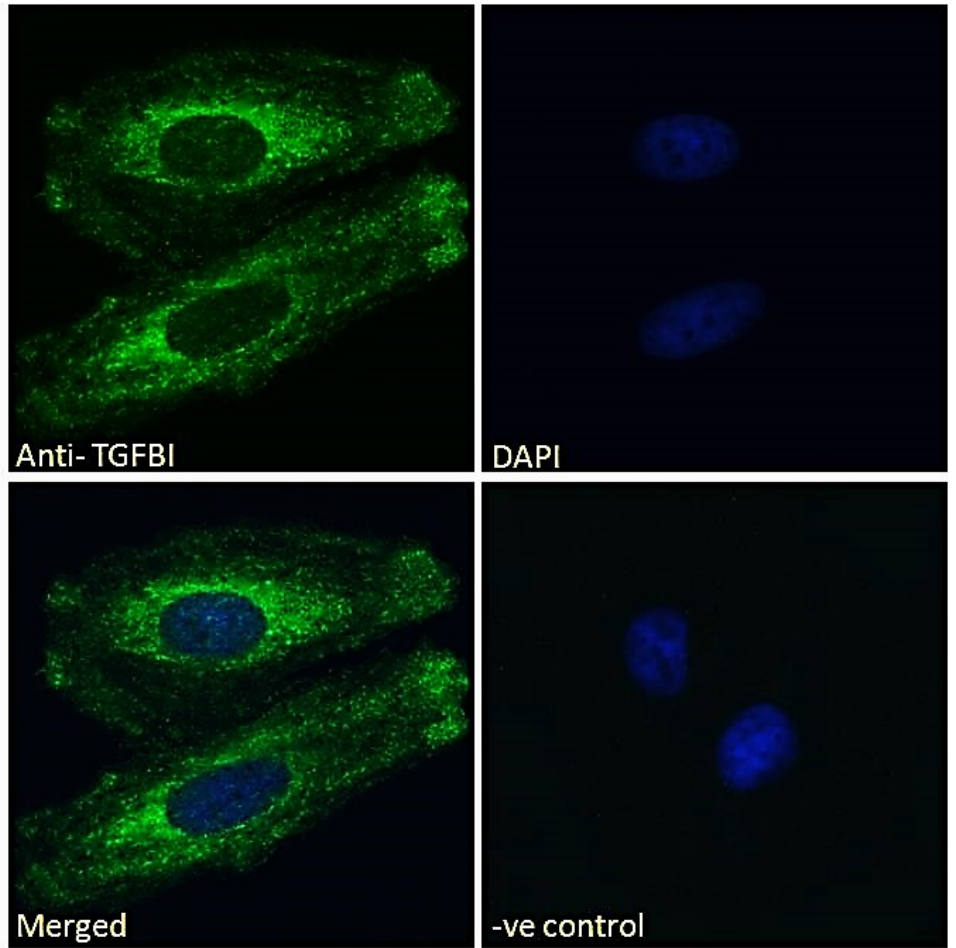
PMID: 26407577



EB09795 (0.3 μ g/ml) staining of Human Kidney (A), Colorectal cancer (B), (0.1 μ g/ml) Human Prostate (C) and Rat Kidney (D) lysate (35 μ g protein in RIPA buffer). Detected by chemiluminescence.



EB09795 (3.8 μ g/ml) staining of paraffin embedded Human Kidney. Steamed antigen retrieval with citrate buffer pH 6, AP-staining.



EB09795 Immunofluorescence analysis of paraformaldehyde fixed HeLa cells, permeabilized with 0.15% Triton. Primary incubation 1hr (10ug/ml) followed by Alexa Fluor 488 secondary antibody (2ug/ml), showing golgi and membrane staining. The nuclear stain is DAPI (blue). Negative control: Unimmunized goat IgG (10ug/ml) followed by Alexa Fluor 488 secondary antibody (2ug/ml).