



SZABO SCANDIC

Part of Europa Biosite

Produktinformation



Forschungsprodukte & Biochemikalien



Zellkultur & Verbrauchsmaterial



Diagnostik & molekulare Diagnostik



Laborgeräte & Service

Weitere Information auf den folgenden Seiten!
See the following pages for more information!



Lieferung & Zahlungsart

siehe unsere [Liefer- und Versandbedingungen](#)

Zuschläge

- Mindermengenzuschlag
- Trockeneiszuschlag
- Gefahrgutzuschlag
- Expressversand

SZABO-SCANDIC HandelsgmbH

Quellenstraße 110, A-1100 Wien

T. +43(0)1 489 3961-0

F. +43(0)1 489 3961-7

mail@szabo-scandic.com

www.szabo-scandic.com

[linkedin.com/company/szaboscandic](https://www.linkedin.com/company/szaboscandic) 



UK Office

Everest Biotech Ltd

Cherwell Innovation Centre
77 Heyford Park
Upper Heyford
Oxfordshire
OX25 5HD
UK

Enquiries:

info@everestbiotech.com

Sales:

sales@everestbiotech.com

Tech support:

support@everestbiotech.com

Tel: +44 (0)1869 238326

Fax: +44 (0)1869 238327

US Office

Everest Biotech c/o Abcore

405 Maple Street, Suite A106
Ramona,
CA 92065
USA

Inquiries:

info@everestbiotech.com

Sales:

usasales@everestbiotech.com

Tech support:

support@everestbiotech.com

Tel: 888-320-4628 (toll-free)

Fax: 888-841-9041

www.everestbiotech.com

**Research Use Only. Not for
diagnostic or therapeutic use.**

EB09796 - Goat Anti-GOLPH3 Antibody

Size: 100µg specific antibody in 200µl



Target Protein

Principal Names: coat-protein, FLJ90675, golgi peripheral membrane protein 1, 34 kDa, golgi phosphoprotein 3, golgi phosphoprotein 3 (coat-protein), golgi protein, golgi-associated protein, GOPP1, GPP34, MIDAS, OTTHUMP00000115847, GOLPH3

Official Symbol: GOLPH3

Accession Number(s): NP_071413.1

Human GeneID(s): [64083](#)

Non-Human GeneID(s): 66629 (mouse)

Immunogen

Peptide with sequence C-DLATKRVRQLLDLD, from the internal region of the protein sequence according to NP_071413.1.

Please note the [peptide](#) is available for sale.

Purification and Storage

Purified from goat serum by ammonium sulphate precipitation followed by antigen affinity chromatography using the immunizing peptide.

Supplied at 0.5 mg/ml in Tris saline, 0.02% sodium azide, pH7.3 with 0.5% bovine serum albumin.

Aliquot and store at -20°C. Minimize freezing and thawing.

Applications Tested

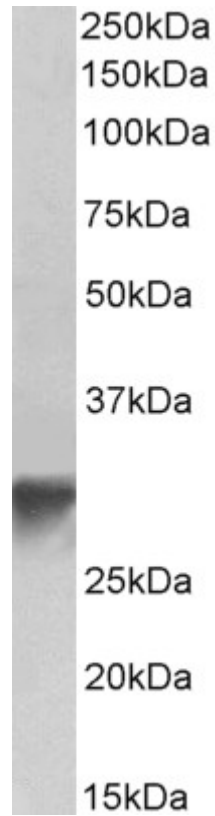
Peptide ELISA: antibody detection limit dilution 1:128000.

Western blot: Approx 33kDa band observed in lysates of Human Platelets and Mouse Brain (calculated MW of 33.8kDa according to NP_071413.1). Recommended concentration: 0.1-0.3µg/ml.

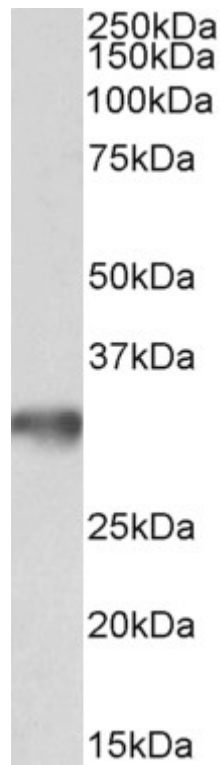
Species Reactivity

Tested: Human, Mouse

Expected from sequence similarity: Human, Mouse, Dog, Cow



EB09796 (0.3 μ g/ml) staining of Human Platelets lysate (35 μ g protein in RIPA buffer). Primary incubation was 1 hour. Detected by chemiluminescence.



EB09796 (0.1 μ g/ml) staining of Mouse brain lysate (35 μ g protein in RIPA buffer). Primary incubation was 1 hour. Detected by chemiluminescence.