



# SZABO SCANDIC

Part of Europa Biosite

## Produktinformation



Forschungsprodukte & Biochemikalien



Zellkultur & Verbrauchsmaterial



Diagnostik & molekulare Diagnostik



Laborgeräte & Service

Weitere Information auf den folgenden Seiten!  
See the following pages for more information!



### Lieferung & Zahlungsart

siehe unsere [Liefer- und Versandbedingungen](#)

### Zuschläge

- Mindermengenzuschlag
- Trockeneiszuschlag
- Gefahrgutzuschlag
- Expressversand

### SZABO-SCANDIC HandelsgmbH

Quellenstraße 110, A-1100 Wien

T. +43(0)1 489 3961-0

F. +43(0)1 489 3961-7

[mail@szabo-scandic.com](mailto:mail@szabo-scandic.com)

[www.szabo-scandic.com](http://www.szabo-scandic.com)

[linkedin.com/company/szaboscandic](https://www.linkedin.com/company/szaboscandic) 



## UK Office

### Everest Biotech Ltd

Cherwell Innovation Centre  
77 Heyford Park  
Upper Heyford  
Oxfordshire  
OX25 5HD  
UK

Enquiries:

[info@everestbiotech.com](mailto:info@everestbiotech.com)

Sales:

[sales@everestbiotech.com](mailto:sales@everestbiotech.com)

Tech support:

[support@everestbiotech.com](mailto:support@everestbiotech.com)

Tel: +44 (0)1869 238326

Fax: +44 (0)1869 238327

## US Office

### Everest Biotech c/o Abcore

405 Maple Street, Suite A106  
Ramona,  
CA 92065  
USA

Inquiries:

[info@everestbiotech.com](mailto:info@everestbiotech.com)

Sales:

[usasales@everestbiotech.com](mailto:usasales@everestbiotech.com)

Tech support:

[support@everestbiotech.com](mailto:support@everestbiotech.com)

Tel: 888-320-4628 (toll-free)

Fax: 888-841-9041

[www.everestbiotech.com](http://www.everestbiotech.com)

**Research Use Only. Not for  
diagnostic or therapeutic use.**

## EB09814 - Goat Anti-TRIM29 / ATDC Antibody

Size: 100µg specific antibody in 200µl



### Target Protein

**Principal Names:** ataxia-telangiectasia group D-associated protein, ATDC, FLJ36085, tripartite motif protein TRIM29, tripartite motif-containing 29, TRIM29

**Official Symbol:** TRIM29

**Accession Number(s):** NP\_036233.2; NP\_001317311.1

**Human GeneID(s):** [23650](#)

**Non-Human GeneID(s):** 72169 (mouse), 300656 (rat)

### Immunogen

Peptide with sequence C-EKDRIKSFTTNE, from the internal region of the protein sequence according to NP\_036233.2; NP\_001317311.1.

Please note the [peptide](#) is available for sale.

### Purification and Storage

Purified from goat serum by ammonium sulphate precipitation followed by antigen affinity chromatography using the immunizing peptide.

Supplied at 0.5 mg/ml in Tris saline, 0.02% sodium azide, pH7.3 with 0.5% bovine serum albumin.

Aliquot and store at -20°C. Minimize freezing and thawing.

### Applications Tested

**Peptide ELISA:** antibody detection limit dilution 1:128000.

**Western blot:** Approx 37kDa band observed in Human Peripheral Blood Mononucleocytes (PBM) and in lysates of cell lines HeLa. An additional 70kDa band was seen in some PBM lysates (calculated MW of 37.3kDa according to NP\_001317311.1 (isoform 2) and 65.8kDa according to NP\_036233.2 (isoform 1)). Recommended concentration: 0.1-1µg/ml. Primary incubation 1 hour at room temperature.

**IHC:** In paraffin embedded Human Skin shows staining of subnuclear structures and cytoplasm in keratinocytes. Recommended concentration: 3.75µg/ml.

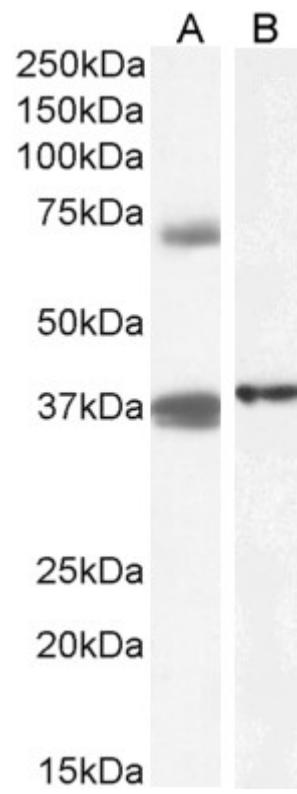
**Immunofluorescence:** Strong expression of the protein seen in the Cytoplasm and Intermediate filaments of A431 cells. Strong expression of the protein seen in the Nucleus of U2OS cells. Recommended concentration: 10µg/ml.

**Flow Cytometry:** Flow cytometric analysis of A431 cells. Recommended concentration: 10ug/ml.

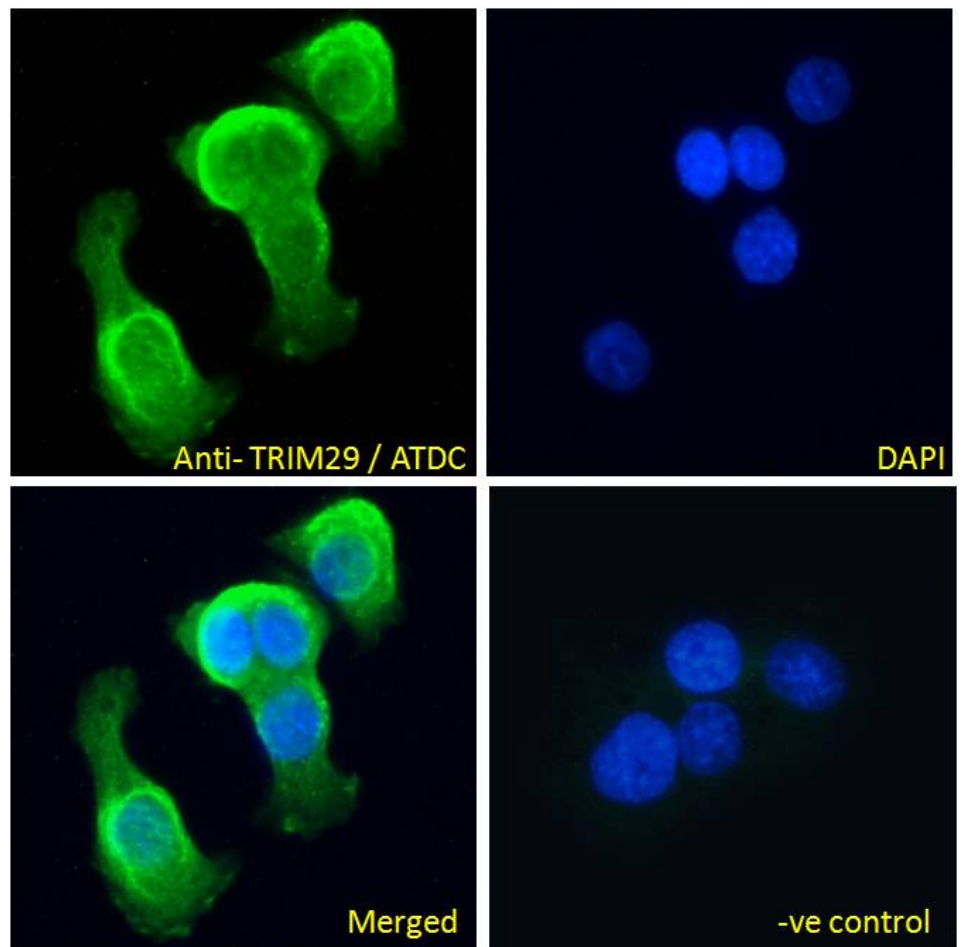
### Species Reactivity

**Tested:** Human

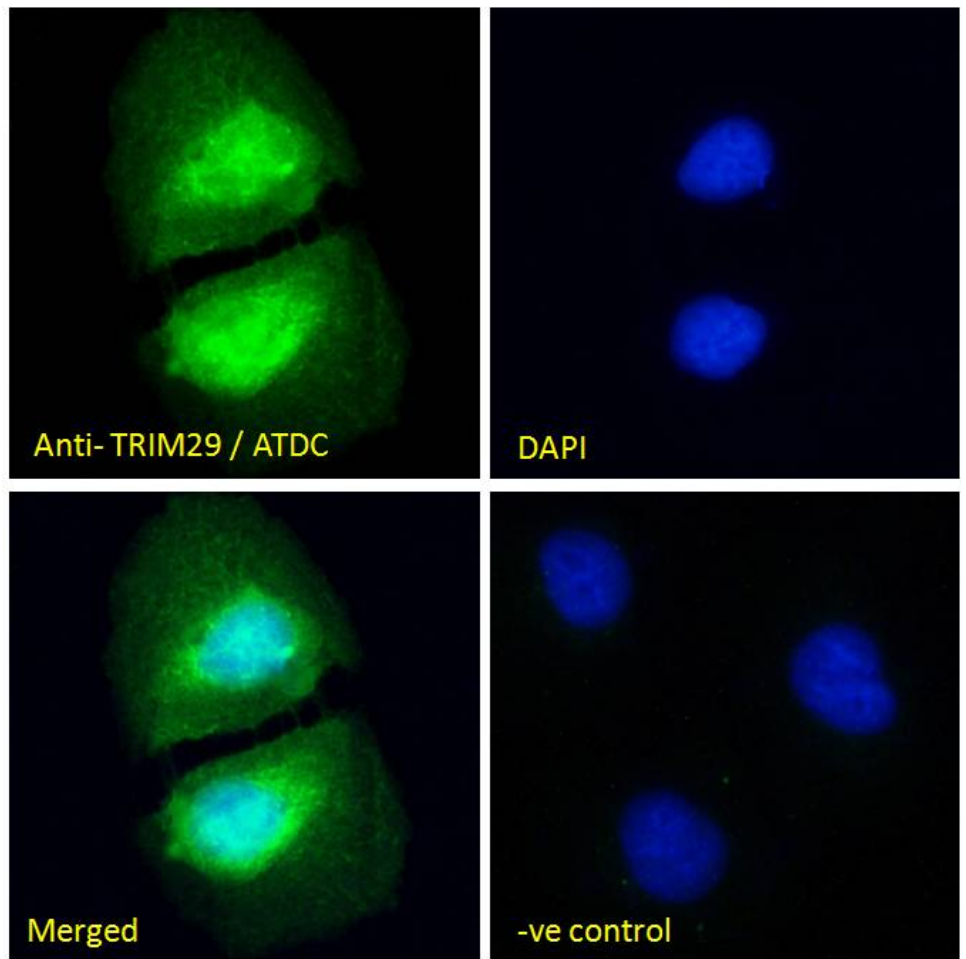
**Expected from sequence similarity:** Human, Mouse, Rat, Cow



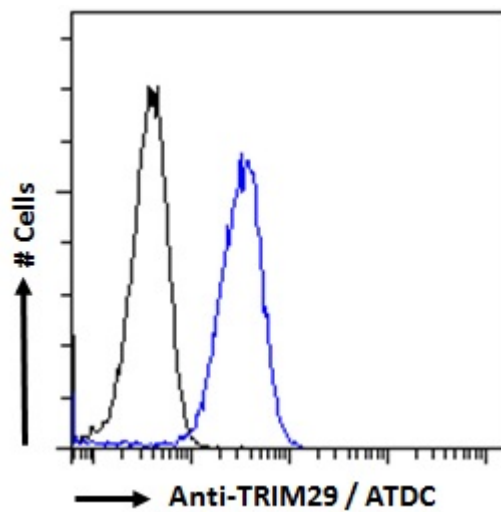
EB09814 (1 $\mu$ g/ml) staining of Peripheral Blood Mononucleocyte (A) and (0.1  $\mu$ g/ml) HeLa (B) cell lysate (35 $\mu$ g protein in RIPA buffer). Detected by chemiluminescence.



EB09814 Immunofluorescence analysis of paraformaldehyde fixed A431 cells, permeabilized with 0.15% Triton. Primary incubation 1hr (10ug/ml) followed by Alexa Fluor 488 secondary antibody (4ug/ml), showing cytoplasmic and Intermediate filament staining. The nuclear stain is DAPI (blue). Negative control: Unimmunized goat IgG (10ug/ml) followed by Alexa Fluor 488 secondary antibody (4ug/ml).

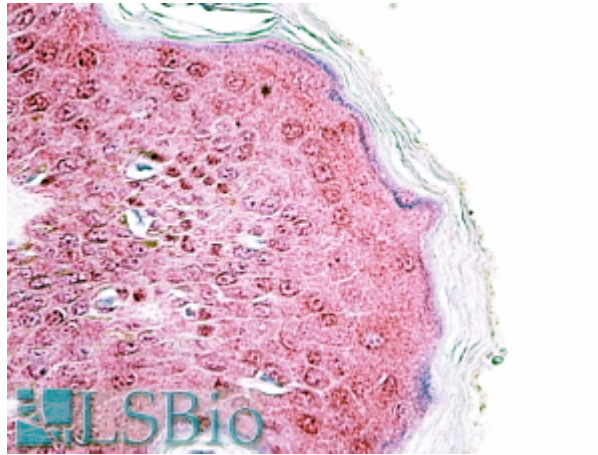


EB09814 Immunofluorescence analysis of paraformaldehyde fixed U2OS cells, permeabilized with 0.15% Triton. Primary incubation 1hr (10ug/ml) followed by Alexa Fluor 488 secondary antibody (4ug/ml), showing nuclear staining. The nuclear stain is DAPI (blue). Negative control: Unimmunized goat IgG (10ug/ml) followed by Alexa Fluor 488 secondary antibody (4ug/ml).



EB09814 Flow cytometric analysis of paraformaldehyde fixed A431 cells (blue line), permeabilized with 0.5% Triton. Primary incubation 1hr (10ug/ml) followed by Alexa Fluor 488 secondary antibody (2ug/ml). IgG control:

Unimmunized goat IgG (black line) followed by Alexa Fluor 488 secondary antibody.



EB09814 (3.75µg/ml) staining of paraffin embedded Human Skin. Steamed antigen retrieval with citrate buffer pH 6, AP-staining.