



SZABO SCANDIC

Part of Europa Biosite

Produktinformation



Forschungsprodukte & Biochemikalien



Zellkultur & Verbrauchsmaterial



Diagnostik & molekulare Diagnostik



Laborgeräte & Service

Weitere Information auf den folgenden Seiten!
See the following pages for more information!



Lieferung & Zahlungsart

siehe unsere [Liefer- und Versandbedingungen](#)

Zuschläge

- Mindermengenzuschlag
- Trockeneiszuschlag
- Gefahrgutzuschlag
- Expressversand

SZABO-SCANDIC HandelsgmbH

Quellenstraße 110, A-1100 Wien

T. +43(0)1 489 3961-0

F. +43(0)1 489 3961-7

mail@szabo-scandic.com

www.szabo-scandic.com

[linkedin.com/company/szaboscandic](https://www.linkedin.com/company/szaboscandic) 



UK Office

Everest Biotech Ltd

Cherwell Innovation Centre
77 Heyford Park
Upper Heyford
Oxfordshire
OX25 5HD
UK

Enquiries:

info@everestbiotech.com

Sales:

sales@everestbiotech.com

Tech support:

support@everestbiotech.com

Tel: +44 (0)1869 238326

Fax: +44 (0)1869 238327

US Office

Everest Biotech c/o Abcore

405 Maple Street, Suite A106
Ramona,
CA 92065
USA

Inquiries:

info@everestbiotech.com

Sales:

usasales@everestbiotech.com

Tech support:

support@everestbiotech.com

Tel: 888-320-4628 (toll-free)

Fax: 888-841-9041

www.everestbiotech.com

**Research Use Only. Not for
diagnostic or therapeutic use.**

EB09815 - Goat Anti-MICS1 / GHITM Antibody

Size: 100µg specific antibody in 200µl



Target Protein

Principal Names: dermal papilla-derived protein 2, DERP2, DKFZp566C0746, FLJ26584, growth hormone inducible transmembrane protein, HSPC282, MICS1, mitochondrial morphology and cristae structure 1, My021, PTD010, TMBIM5, transmembrane BAX inhibitor motif containing, GHITM

Official Symbol: GHITM

Accession Number(s): NP_055209.2

Human GeneID(s): [27069](#)

Non-Human GeneID(s): 66092 (mouse), 290596 (rat)

Immunogen

Peptide with sequence C-PSREYATKTRIGIR, from the internal region of the protein sequence according to NP_055209.2.

Please note the [peptide](#) is available for sale.

Purification and Storage

Purified from goat serum by ammonium sulphate precipitation followed by antigen affinity chromatography using the immunizing peptide.

Supplied at 0.5 mg/ml in Tris saline, 0.02% sodium azide, pH7.3 with 0.5% bovine serum albumin.

Aliquot and store at -20°C. Minimize freezing and thawing.

Applications Tested

Peptide ELISA: antibody detection limit dilution 1:8000.

Western blot: Approx 35kDa band observed in lysates of cell line HeLa and of Human Brain (Cerebellum), Duodenum and Heart (calculated MW of 37.2kDa according to Human NP_055209.2). Recommended concentration: 0.01-0.1µg/ml.

Species Reactivity

Tested: Human

Expected from sequence similarity: Human, Mouse, Rat, Dog, Cow, Pig

Specific Reference

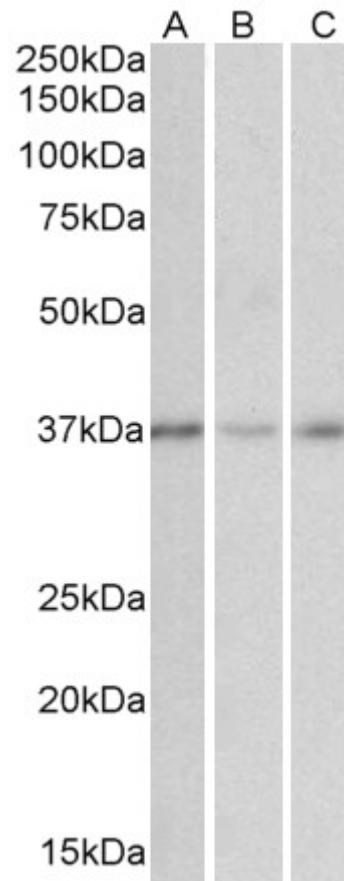
This antibody has been successfully used in Western blot on Human:

Meng H, Yamashita C, Shiba-Fukushima K, Inoshita T, Funayama M, Sato S, Hatta T, Natsume T, Umitsu M, Takagi J, Imai Y, Hattori N.

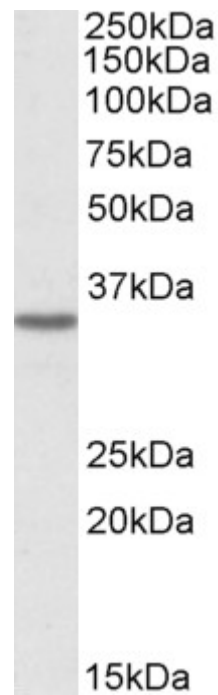
Loss of Parkinson's disease-associated protein CHCHD2 affects mitochondrial crista structure and destabilizes cytochrome c

Nat Commun. 2017 Jun 7;8:15500.

PMID: 28589937



EB09815 (0.01 μ g/ml) staining of Human Cerebellum (A), Duodenum (B) and Heart (C) cell lysates (35 μ g protein in RIPA buffer). Primary incubation was 1 hour. Detected by chemiluminescence.



EB09815 (0.3 μ g/ml) staining of HeLa cell lysate (35 μ g protein in RIPA buffer). Primary incubation was 1 hour. Detected by chemiluminescence.