



# SZABO SCANDIC

Part of Europa Biosite

## Produktinformation



Forschungsprodukte & Biochemikalien



Zellkultur & Verbrauchsmaterial



Diagnostik & molekulare Diagnostik



Laborgeräte & Service

Weitere Information auf den folgenden Seiten!  
See the following pages for more information!



### Lieferung & Zahlungsart

siehe unsere [Liefer- und Versandbedingungen](#)

### Zuschläge

- Mindermengenzuschlag
- Trockeneiszuschlag
- Gefahrgutzuschlag
- Expressversand

### SZABO-SCANDIC HandelsgmbH

Quellenstraße 110, A-1100 Wien

T. +43(0)1 489 3961-0

F. +43(0)1 489 3961-7

[mail@szabo-scandic.com](mailto:mail@szabo-scandic.com)

[www.szabo-scandic.com](http://www.szabo-scandic.com)

[linkedin.com/company/szaboscandic](https://www.linkedin.com/company/szaboscandic) 



## UK Office

### Everest Biotech Ltd

Cherwell Innovation Centre  
77 Heyford Park  
Upper Heyford  
Oxfordshire  
OX25 5HD  
UK

Enquiries:

[info@everestbiotech.com](mailto:info@everestbiotech.com)

Sales:

[sales@everestbiotech.com](mailto:sales@everestbiotech.com)

Tech support:

[support@everestbiotech.com](mailto:support@everestbiotech.com)

Tel: +44 (0)1869 238326

Fax: +44 (0)1869 238327

## US Office

### Everest Biotech c/o Abcore

405 Maple Street, Suite A106  
Ramona,  
CA 92065  
USA

Inquiries:

[info@everestbiotech.com](mailto:info@everestbiotech.com)

Sales:

[usasales@everestbiotech.com](mailto:usasales@everestbiotech.com)

Tech support:

[support@everestbiotech.com](mailto:support@everestbiotech.com)

Tel: 888-320-4628 (toll-free)

Fax: 888-841-9041

[www.everestbiotech.com](http://www.everestbiotech.com)

**Research Use Only. Not for  
diagnostic or therapeutic use.**

## EB09826 - Goat Anti-SPAG16 (aa139-152) Antibody

Size: 100µg specific antibody in 200µl



### Target Protein

**Principal Names:** DKFZp666P1710, FLJ22724, FLJ37717, MGC87036, PF20, sperm associated antigen 16, sperm-associated WD repeat protein, WD repeat domain 29, WDR29, SPAG16

**Official Symbol:** SPAG16

**Accession Number(s):** NP\_078808.3; NP\_001020607.1

**Human GeneID(s):** [79582](#)

**Important Comments:** This antibody is expected to recognize isoform 1 and 2 (NP\_078808.3; NP\_001020607.1).

### Immunogen

Peptide with sequence C-KGVTELRTVGNVDP, from the internal region of the protein sequence according to NP\_078808.3; NP\_001020607.1.

Please note the [peptide](#) is available for sale.

### Purification and Storage

Purified from goat serum by ammonium sulphate precipitation followed by antigen affinity chromatography using the immunizing peptide.

Supplied at 0.5 mg/ml in Tris saline, 0.02% sodium azide, pH7.3 with 0.5% bovine serum albumin.

Aliquot and store at -20°C. Minimize freezing and thawing.

### Applications Tested

**Peptide ELISA:** antibody detection limit dilution 1:16000.

**IHC:** This antibody was successfully used in Human and Murine frozen Brain sections (PMID: 25086173).

**Immunofluorescence:** Strong expression of the protein seen in the cytoplasm of A431 cells. Recommended concentration: 10µg/ml.

**Flow Cytometry:** Flow cytometric analysis of A431 cells. Recommended concentration: 10ug/ml.

### Species Reactivity

**Tested:** Human, Mouse

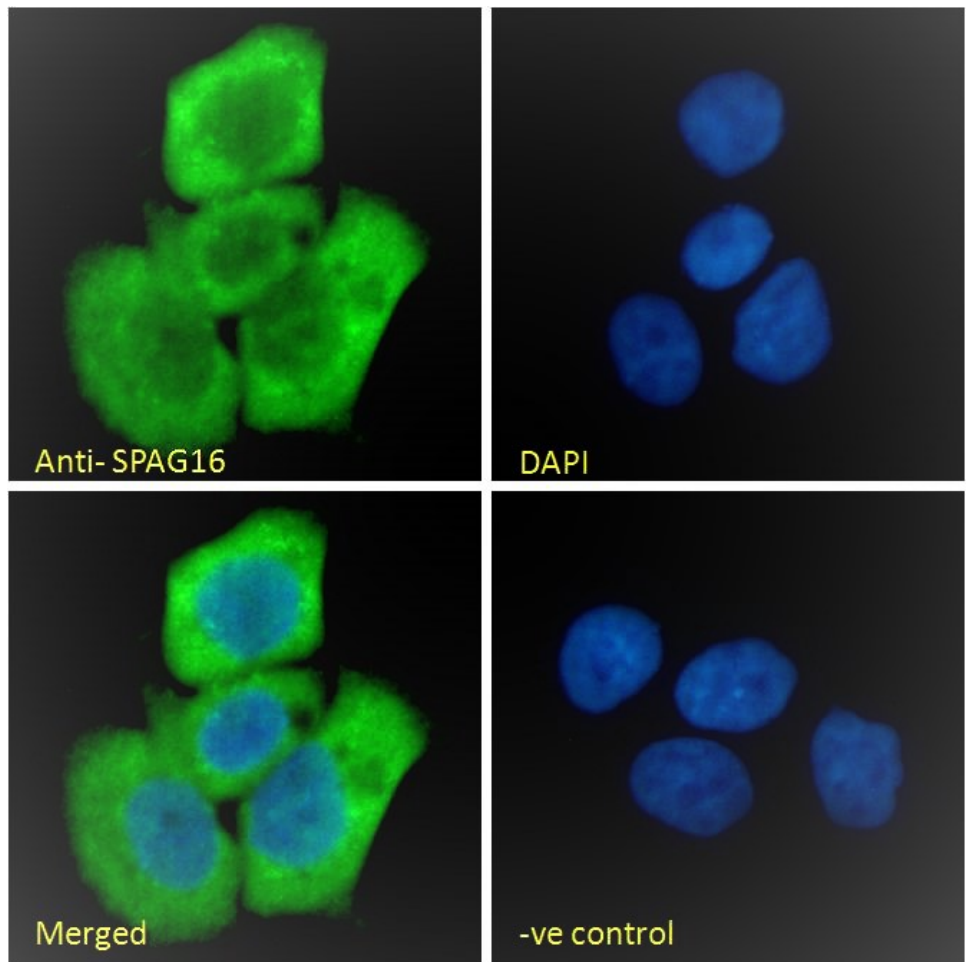
**Expected from sequence similarity:** Human, Dog, Cow

### Specific Reference

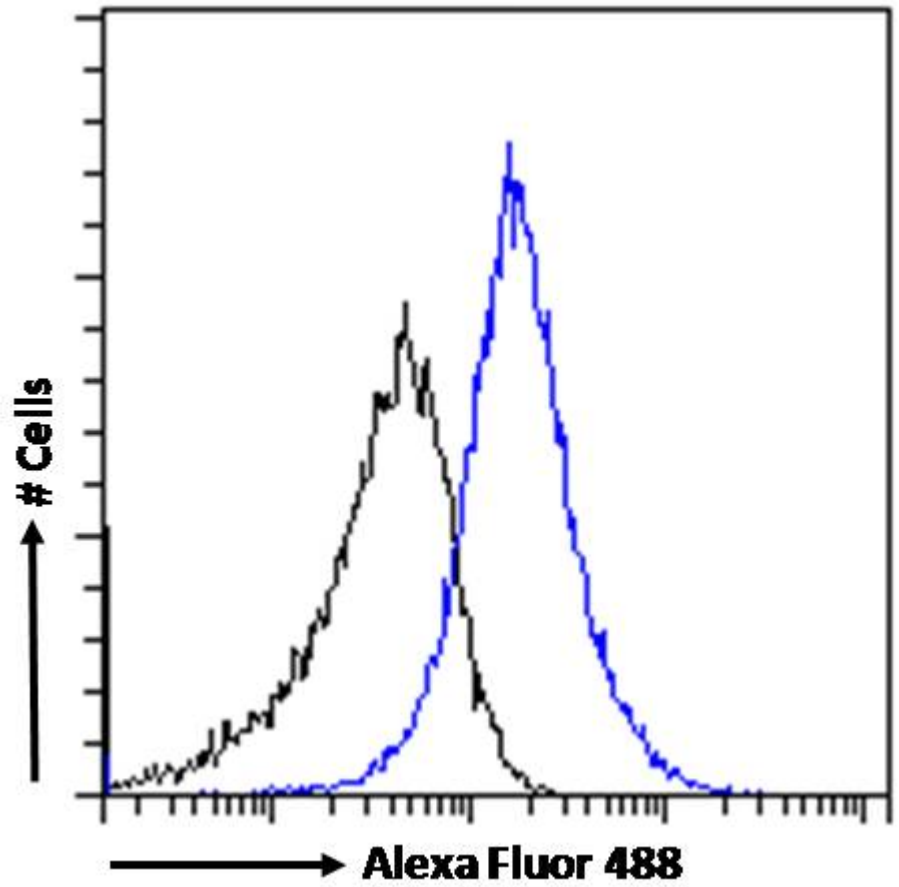
de Bock L, Somers K, Fraussen J, Hendriks JJ, van Horssen J, Rouwette M, Hellings N, Villar LM, Alvarez-Cermeño JC, Espiño M, Hupperts R, Jongen P, Damoiseaux J, Verbeek MM, De Deyn PP, D'hooghe M, Van Wijmeersch B, Stinissen P, Somers V. Sperm-associated antigen 16 is a novel target of the humoral autoimmune response in multiple sclerosis.

J Immunol. 2014 Sep 1;193(5):2147-56.

PMID: 25086173



EB09826 Immunofluorescence analysis of paraformaldehyde fixed A431 cells, permeabilized with 0.15% Triton. Primary incubation 1hr (10ug/ml) followed by Alexa Fluor 488 secondary antibody (2ug/ml), showing cytoplasmic staining. The nuclear stain is DAPI (blue). Negative control: Unimmunized goat IgG (10ug/ml) followed by Alexa Fluor 488 secondary antibody (2ug/ml).



EB09826 Flow cytometric analysis of paraformaldehyde fixed A431 cells (blue line), permeabilized with 0.5% Triton. Primary incubation 1hr (10ug/ml) followed by Alexa Fluor 488 secondary antibody (1ug/ml). IgG control: Unimmunized goat IgG (black line) followed by Alexa Fluor 488 secondary antibody.