



SZABO SCANDIC

Part of Europa Biosite

Produktinformation



Forschungsprodukte & Biochemikalien



Zellkultur & Verbrauchsmaterial



Diagnostik & molekulare Diagnostik



Laborgeräte & Service

Weitere Information auf den folgenden Seiten!
See the following pages for more information!



Lieferung & Zahlungsart

siehe unsere [Liefer- und Versandbedingungen](#)

Zuschläge

- Mindermengenzuschlag
- Trockeneiszuschlag
- Gefahrgutzuschlag
- Expressversand

SZABO-SCANDIC HandelsgmbH

Quellenstraße 110, A-1100 Wien

T. +43(0)1 489 3961-0

F. +43(0)1 489 3961-7

mail@szabo-scandic.com

www.szabo-scandic.com

[linkedin.com/company/szaboscandic](https://www.linkedin.com/company/szaboscandic) 



UK Office

Everest Biotech Ltd

Cherwell Innovation Centre
77 Heyford Park
Upper Heyford
Oxfordshire
OX25 5HD
UK

Enquiries:

info@everestbiotech.com

Sales:

sales@everestbiotech.com

Tech support:

support@everestbiotech.com

Tel: +44 (0)1869 238326

Fax: +44 (0)1869 238327

US Office

Everest Biotech c/o Abcore

405 Maple Street, Suite A106
Ramona,
CA 92065
USA

Inquiries:

info@everestbiotech.com

Sales:

usasales@everestbiotech.com

Tech support:

support@everestbiotech.com

Tel: 888-320-4628 (toll-free)

Fax: 888-841-9041

www.everestbiotech.com

**Research Use Only. Not for
diagnostic or therapeutic use.**

EB09876 - Goat Anti-NALP2 / PAN1 Antibody

Size: 100µg specific antibody in 200µl



Target Protein

Principal Names: CLR19.9, FLJ20510, NACHT, leucine rich repeat and PYD containing 2, NACHT, LRR and PYD containing protein 2, NALP2, NBS1, NLR family, pyrin domain containing 2, nucleotide-binding oligomerization domain, I, PAN1, PYPAF2, PYRIN-Containing APAF1-like, NLRP2

Official Symbol: NLRP2

Accession Number(s): NP_060322.1

Human GeneID(s): [55655](#)

Immunogen

Peptide with sequence C-KNPQLIIDTEKHHP, from the C Terminus (near) of the protein sequence according to NP_060322.1.

Please note the [peptide](#) is available for sale.

Purification and Storage

Purified from goat serum by ammonium sulphate precipitation followed by antigen affinity chromatography using the immunizing peptide.

Supplied at 0.5 mg/ml in Tris saline, 0.02% sodium azide, pH7.3 with 0.5% bovine serum albumin.

Aliquot and store at -20°C. Minimize freezing and thawing.

Applications Tested

Peptide ELISA: antibody detection limit dilution 1:16000.

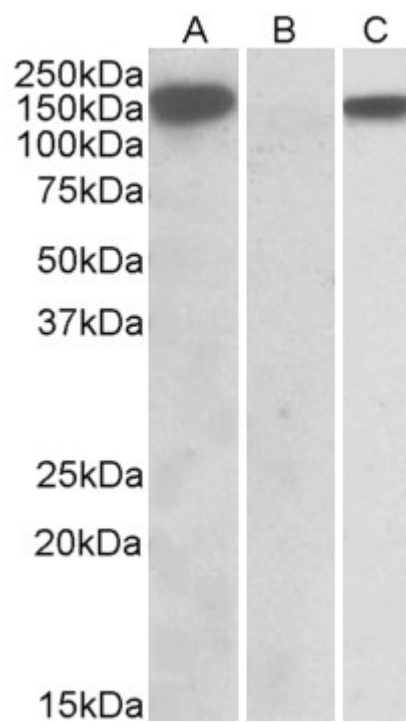
Western blot: In transfected HEK293 transiently expressing full-length Human NLRP2 (myc and DYKDDDDK tagged), a band of approx. 150kDa was observed. No bands were observed in mock-transfected HEK293 and the same band was observed using anti-DYKDDDDK tag antibody. Recommended concentration, 1-2ug/ml.

Purchase the +ve control! The transfected lysate used in QC is available for sale. Please email sales@everestbiotech.com to request datasheet, pricing and delivery information.

Species Reactivity

Tested: Human

Expected from sequence similarity: Human



HEK293 lysate (10ug protein in RIPA buffer) overexpressing Human NLRP2 with DYKDDDDK tag probed with EB09876 (1ug/ml) in Lane A and probed with anti- DYKDDDDK Tag (1/5000) in lane C. Mock-transfected HEK293 probed with EB09876 (1mg/ml) in Lane B. Primary incubations were for 1 hour. Detected by chemiluminescence.