



SZABO SCANDIC

Part of Europa Biosite

Produktinformation



Forschungsprodukte & Biochemikalien



Zellkultur & Verbrauchsmaterial



Diagnostik & molekulare Diagnostik



Laborgeräte & Service

Weitere Information auf den folgenden Seiten!
See the following pages for more information!



Lieferung & Zahlungsart

siehe unsere [Liefer- und Versandbedingungen](#)

Zuschläge

- Mindermengenzuschlag
- Trockeneiszuschlag
- Gefahrgutzuschlag
- Expressversand

SZABO-SCANDIC HandelsgmbH

Quellenstraße 110, A-1100 Wien

T. +43(0)1 489 3961-0

F. +43(0)1 489 3961-7

mail@szabo-scandic.com

www.szabo-scandic.com

[linkedin.com/company/szaboscandic](https://www.linkedin.com/company/szaboscandic) 



UK Office

Everest Biotech Ltd

Cherwell Innovation Centre
77 Heyford Park
Upper Heyford
Oxfordshire
OX25 5HD
UK

Enquiries:

info@everestbiotech.com

Sales:

sales@everestbiotech.com

Tech support:

support@everestbiotech.com

Tel: +44 (0)1869 238326

Fax: +44 (0)1869 238327

US Office

Everest Biotech c/o Abcore

405 Maple Street, Suite A106
Ramona,
CA 92065
USA

Inquiries:

info@everestbiotech.com

Sales:

usasales@everestbiotech.com

Tech support:

support@everestbiotech.com

Tel: 888-320-4628 (toll-free)

Fax: 888-841-9041

www.everestbiotech.com

**Research Use Only. Not for
diagnostic or therapeutic use.**

EB09901 - Goat Anti-TRIM71 (aa390-402) Antibody

Size: 100µg specific antibody in 200µl



Target Protein

Principal Names: abnormal cell LINeage LIN-41, homolog of C. elegans Lin-41, LIN41, LIN-41, tripartite motif-containing 71, TRIM71

Official Symbol: TRIM71

Accession Number(s): NP_001034200.1

Human GeneID(s): [131405](#)

Non-Human GeneID(s): 636331 (mouse), 301042 (rat)

Immunogen

Peptide with sequence C-RQVKAKSLYLQVE, from the internal region of the protein sequence according to NP_001034200.1.

Please note the [peptide](#) is available for sale.

Purification and Storage

Purified from goat serum by ammonium sulphate precipitation followed by antigen affinity chromatography using the immunizing peptide.

Supplied at 0.5 mg/ml in Tris saline, 0.02% sodium azide, pH7.3 with 0.5% bovine serum albumin.

Aliquot and store at -20°C. Minimize freezing and thawing.

Applications Tested

Peptide ELISA: antibody detection limit dilution 1:8000.

Western blot: Approx 100kDa band observed in lysates of the cell lines HEK293 and NIH3T3 (calculated MW of 93.4kDa according to Human NP_001034200.1 and 92.1kDa according to Mouse NP_001035968.1). The observed molecular weight corresponds to findings with EB09902, a product of different design reacting to a different part of the same protein. Recommended concentration: 0.3-1µg/ml.

IHC: Paraffin embedded Human Brain (Cerebellum). Recommended concentration: 3.75µg/ml.

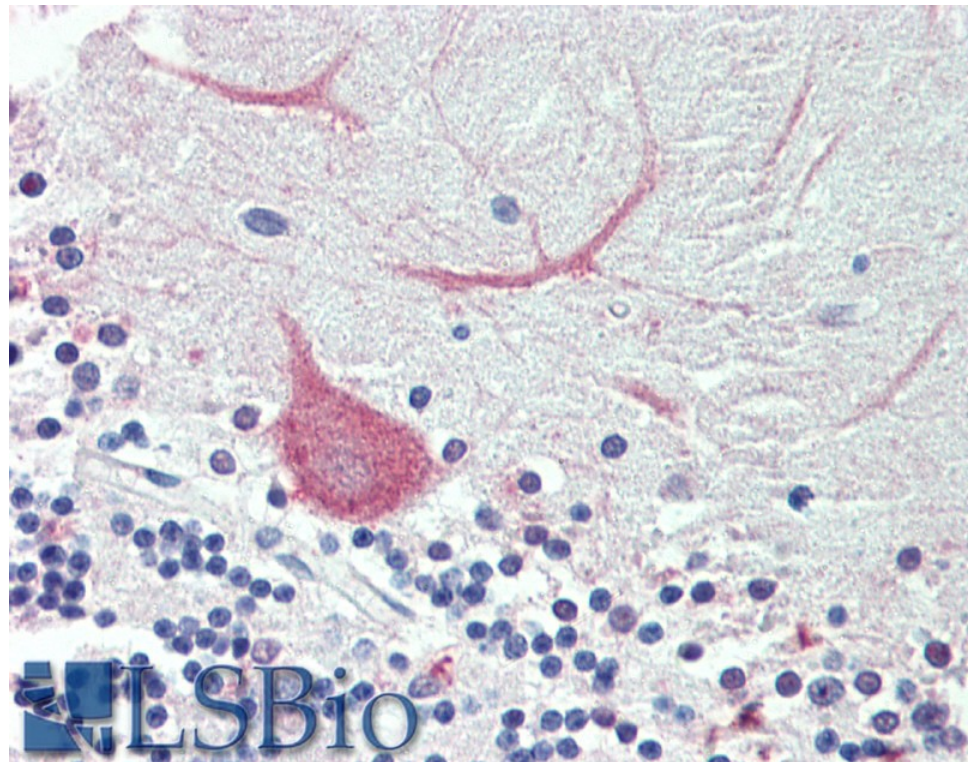
Species Reactivity

Tested: Human, Mouse

Expected from sequence similarity: Human, Mouse, Rat, Dog, Cow



EB09901 (0.3 μ g/ml) staining of HEK293 (A) and NIH3T3 (B) lysate (35 μ g protein in RIPA buffer). Primary incubation was 1 hour. Detected by chemiluminescence.



EB09901 (3.75 μ g/ml) staining of paraffin embedded Human Cerebellum. Steamed antigen retrieval with citrate buffer pH 6, AP-staining.