



SZABO SCANDIC

Part of Europa Biosite

Produktinformation



Forschungsprodukte & Biochemikalien



Zellkultur & Verbrauchsmaterial



Diagnostik & molekulare Diagnostik



Laborgeräte & Service

Weitere Information auf den folgenden Seiten!
See the following pages for more information!



Lieferung & Zahlungsart

siehe unsere [Liefer- und Versandbedingungen](#)

Zuschläge

- Mindermengenzuschlag
- Trockeneiszuschlag
- Gefahrgutzuschlag
- Expressversand

SZABO-SCANDIC HandelsgmbH

Quellenstraße 110, A-1100 Wien

T. +43(0)1 489 3961-0

F. +43(0)1 489 3961-7

mail@szabo-scandic.com

www.szabo-scandic.com

[linkedin.com/company/szaboscandic](https://www.linkedin.com/company/szaboscandic) 



UK Office

Everest Biotech Ltd

Cherwell Innovation Centre
77 Heyford Park
Upper Heyford
Oxfordshire
OX25 5HD
UK

Enquiries:

info@everestbiotech.com

Sales:

sales@everestbiotech.com

Tech support:

support@everestbiotech.com

Tel: +44 (0)1869 238326

Fax: +44 (0)1869 238327

US Office

Everest Biotech c/o Abcore

405 Maple Street, Suite A106
Ramona,
CA 92065
USA

Inquiries:

info@everestbiotech.com

Sales:

usasales@everestbiotech.com

Tech support:

support@everestbiotech.com

Tel: 888-320-4628 (toll-free)

Fax: 888-841-9041

www.everestbiotech.com

**Research Use Only. Not for
diagnostic or therapeutic use.**

EB09929 - Goat Anti-SLC26A6 Antibody

Size: 100µg specific antibody in 200µl



Target Protein

Principal Names: anion transporter 1, DKFZp586E1422, pendrin L1, pendrin-like protein 1, solute carrier family 26, member 6, sulfate anion transporter, SLC26A6

Official Symbol: SLC26A6

Accession Number(s): NP_075062.2; NP_599025.2; NP_602298.2; NP_001035544.1

Human GeneID(s): [65010](#)

Non-Human GeneID(s): 171429 (mouse)

Important Comments: This antibody is expected to recognize isoform 1, 2, 3 and 4 (NP_075062.2; NP_599025.2; NP_602298.2; NP_001035544.1). Please note that this antibody was shown unfit for Mouse tissues both in IHC and WB.

Immunogen

Peptide with sequence C-SAPRTHQWRT, from the internal region of the protein sequence according to NP_075062.2; NP_599025.2; NP_602298.2; NP_001035544.1.

Please note the [peptide](#) is available for sale.

Purification and Storage

Purified from goat serum by ammonium sulphate precipitation followed by antigen affinity chromatography using the immunizing peptide.

Supplied at 0.5 mg/ml in Tris saline, 0.02% sodium azide, pH7.3 with 0.5% bovine serum albumin.

Aliquot and store at -20°C. Minimize freezing and thawing.

Applications Tested

Peptide ELISA: antibody detection limit dilution 1:8000.

Western blot: Approx 90kDa band observed in Human renal cortical brush-border membrane lysates (calculated MW of 83.0kDa according to NP_075062.2).

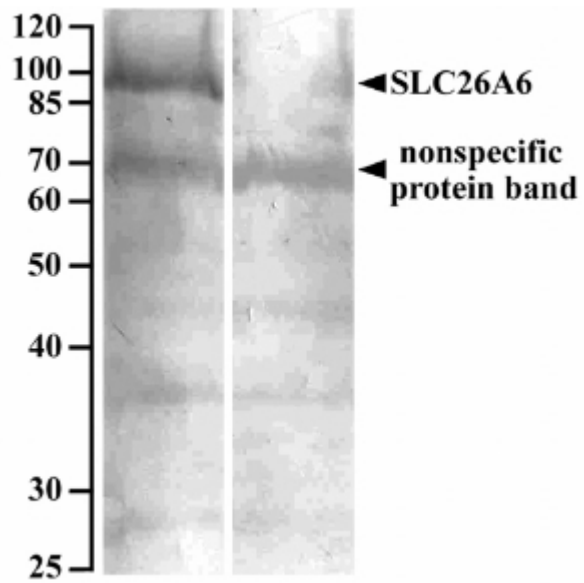
Recommended concentration: 10µg/ml for overnight incubation.

IHC: In paraffin embedded Human Kidney shows staining of brush borders along the entire proximal convoluted tubule. Recommended concentration, 0.1-0.3mg/ml. Please note the unusually low dilution required for this type of application!

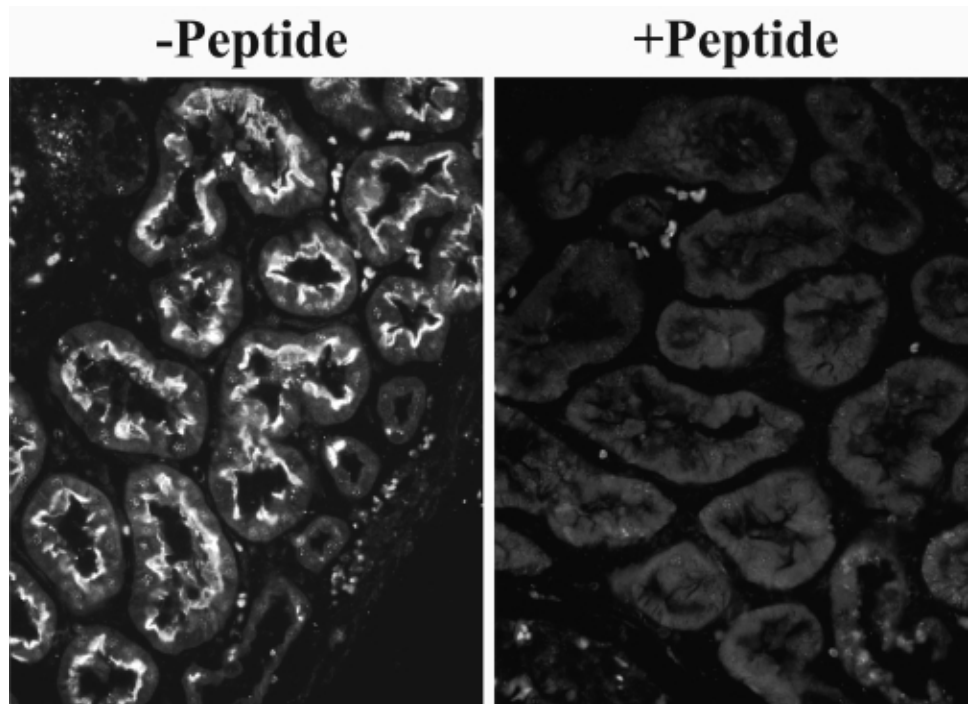
Species Reactivity

Tested: Human

Expected from sequence similarity: Human



EB09929 (10 μ g/ml) staining of Human renal cortical brush-border membrane lysate (90 μ g protein denatured at 37C for 30min) with (B) and without (A) blocking with the immunizing peptide. Primary incubation was overnight at 4C. Detected by NBT/BCIP. Data kindly provided by Dean Karaica, B. Sc., and Ivan Sabolic, M.D., Ph.D., Institute for Medical Research and Occupational Health, Zagreb, Croatia.



EB09929 (0.1mg/ml) overnight staining of paraffin embedded Human Kidney. Microwaved antigen retrieval with citrate buffer pH 6, CY3-staining. Data kindly provided by Dean Karaica, B. Sc., and Ivan Sabolic, M.D., Ph.D., Institute for Medical Research and Occupational Health, Zagreb, Croatia.