



SZABO SCANDIC

Part of Europa Biosite

Produktinformation



Forschungsprodukte & Biochemikalien



Zellkultur & Verbrauchsmaterial



Diagnostik & molekulare Diagnostik



Laborgeräte & Service

Weitere Information auf den folgenden Seiten!
See the following pages for more information!



Lieferung & Zahlungsart

siehe unsere [Liefer- und Versandbedingungen](#)

Zuschläge

- Mindermengenzuschlag
- Trockeneiszuschlag
- Gefahrgutzuschlag
- Expressversand

SZABO-SCANDIC HandelsgmbH

Quellenstraße 110, A-1100 Wien

T. +43(0)1 489 3961-0

F. +43(0)1 489 3961-7

mail@szabo-scandic.com

www.szabo-scandic.com

[linkedin.com/company/szaboscandic](https://www.linkedin.com/company/szaboscandic) 

UK Office

Everest Biotech Ltd

Cherwell Innovation Centre
77 Heyford Park
Upper Heyford
Oxfordshire
OX25 5HD
UK

Enquiries:

info@everestbiotech.com

Sales:

sales@everestbiotech.com

Tech support:

support@everestbiotech.com

Tel: +44 (0)1869 238326

Fax: +44 (0)1869 238327

US Office

Everest Biotech c/o Abcore

405 Maple Street, Suite A106
Ramona,
CA 92065
USA

Inquiries:

info@everestbiotech.com

Sales:

usasales@everestbiotech.com

Tech support:

support@everestbiotech.com

Tel: 888-320-4628 (toll-free)

Fax: 888-841-9041

www.everestbiotech.com

**Research Use Only. Not for
diagnostic or therapeutic use.**

EB10173 - Goat Anti-ETFA (aa139-152) Antibody

Size: 100µg specific antibody in 200µl



Target Protein

Principal Names: electron transfer flavoprotein alpha-subunit, electron transfer flavoprotein, alpha polypeptide, electron-transfer-flavoprotein, alpha polypeptide, EMA, GA2, glutaric aciduria II, MADD, ETFA

Official Symbol: ETFA

Accession Number(s): NP_000117.1; NP_001121188.1

Human GeneID(s): [2108](#)

Non-Human GeneID(s): 110842 (mouse), 300726 (rat)

Important Comments: This antibody is expected to recognize both isoforms (NP_000117.1; NP_001121188.1). Amino acid numbering in name refers to NP_000117.1 sequence)

Immunogen

Peptide with sequence C-KSPDTFVRTIYAGN, from the internal region of the protein sequence according to NP_000117.1; NP_001121188.1.

Please note the [peptide](#) is available for sale.

Purification and Storage

Purified from goat serum by ammonium sulphate precipitation followed by antigen affinity chromatography using the immunizing peptide.

Supplied at 0.5 mg/ml in Tris saline, 0.02% sodium azide, pH7.3 with 0.5% bovine serum albumin.

Aliquot and store at -20°C. Minimize freezing and thawing.

Applications Tested

Peptide ELISA: antibody detection limit dilution 1:16000.

Western blot: Approx 30+35kDa bands observed in Human Colon lysates (calculated MW of 35.1kDa according to NP_000117.1 and of 30.0kDa according to NP_001121188.1. Recommended concentration: 0.1-0.3µg/ml. Primary incubation was 1 hour.

IHC: Paraffin embedded Human Adrenal Gland and Heart. Recommended concentration: 5µg/ml.

Species Reactivity

Tested: Human

Expected from sequence similarity: Human, Mouse, Rat, Pig, Dog, Cow

Specific Reference

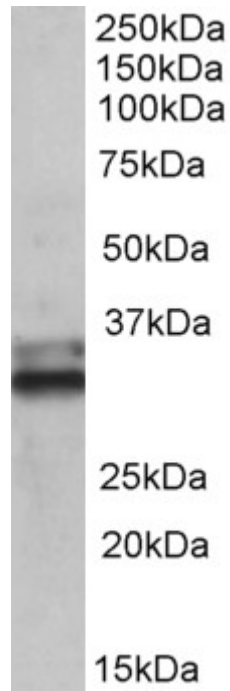
This antibody has been successfully used in Western blot on Mouse:

Tomilov A, Tomilova N, Shan Y, Hagopian K, Bettaieb A, Kim K, Pelicci PG, Haj F, Ramsey J, Cortopassi G.

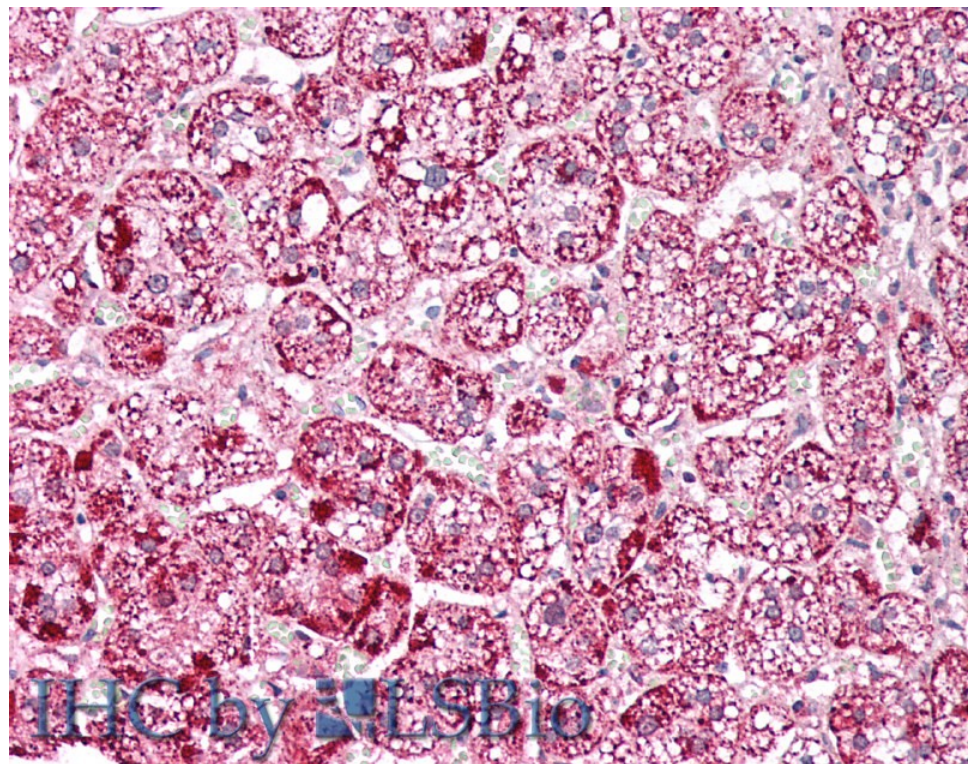
The mitochondrial isoform of Shc protein inhibits thiolase and lipid oxidation.

J Biol Chem. 2016 Apr 8.

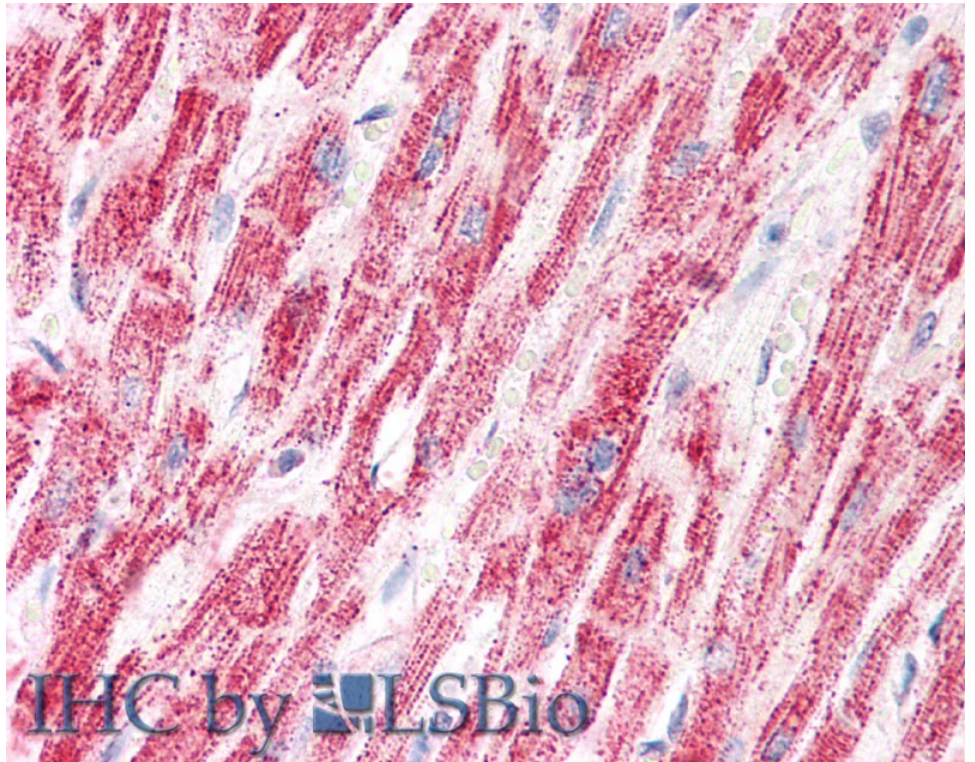
PMID: 27059956



EB10173 (0.1 μ g/ml) staining of Human Colon lysate (35 μ g protein in RIPA buffer). Detected by chemiluminescence.



EB10173 (5 μ g/ml) staining of paraffin embedded Human Adrenal Gland. Steamed antigen retrieval with citrate buffer pH 6, AP-staining.



EB10173 (5 μ g/ml) staining of paraffin embedded Human Heart. Steamed antigen retrieval with citrate buffer pH 6, AP-staining.