



SZABO SCANDIC

Part of Europa Biosite

Produktinformation



Forschungsprodukte & Biochemikalien



Zellkultur & Verbrauchsmaterial



Diagnostik & molekulare Diagnostik



Laborgeräte & Service

Weitere Information auf den folgenden Seiten!
See the following pages for more information!



Lieferung & Zahlungsart

siehe unsere [Liefer- und Versandbedingungen](#)

Zuschläge

- Mindermengenzuschlag
- Trockeneiszuschlag
- Gefahrgutzuschlag
- Expressversand

SZABO-SCANDIC HandelsgmbH

Quellenstraße 110, A-1100 Wien

T. +43(0)1 489 3961-0

F. +43(0)1 489 3961-7

mail@szabo-scandic.com

www.szabo-scandic.com

[linkedin.com/company/szaboscandic](https://www.linkedin.com/company/szaboscandic) 



UK Office

Everest Biotech Ltd

Cherwell Innovation Centre
77 Heyford Park
Upper Heyford
Oxfordshire
OX25 5HD
UK

Enquiries:

info@everestbiotech.com

Sales:

sales@everestbiotech.com

Tech support:

support@everestbiotech.com

Tel: +44 (0)1869 238326

Fax: +44 (0)1869 238327

US Office

Everest Biotech c/o Abcore

405 Maple Street, Suite A106
Ramona,
CA 92065
USA

Inquiries:

info@everestbiotech.com

Sales:

usasales@everestbiotech.com

Tech support:

support@everestbiotech.com

Tel: 888-320-4628 (toll-free)

Fax: 888-841-9041

www.everestbiotech.com

**Research Use Only. Not for
diagnostic or therapeutic use.**

EB10216 - Goat Anti-LY6E (mouse) Antibody

Size: 100µg specific antibody in 200µl



Target Protein

Principal Names: lymphocyte antigen 6 complex, locus E, retinoic acid induced gene E, RIGE, RIG-E, SCA2, SCA-2, TSA-1, LY6E

Official Symbol: LY6E

Accession Number(s): NP_002337.1; NP_032555.1

Non-Human GeneID(s): 17069 (mouse)

Important Comments: Reported variants represent identical protein: NP_002337.1, NP_001120685.1

Immunogen

Peptide with sequence SCQEKDHYCIT, from the internal region of the protein sequence according to NP_002337.1; NP_032555.1.

Please note the [peptide](#) is available for sale.

Purification and Storage

Purified from goat serum by ammonium sulphate precipitation followed by antigen affinity chromatography using the immunizing peptide.

Supplied at 0.5 mg/ml in Tris saline, 0.02% sodium azide, pH7.3 with 0.5% bovine serum albumin.

Aliquot and store at -20°C. Minimize freezing and thawing.

Applications Tested

Peptide ELISA: antibody detection limit dilution 1:16000.

IHC: Customer obtained staining in Mouse Placenta in a pattern consistent with in situ hybridisation results, and no staining in KO mice. This antibody has been successfully used in IHC on Mouse: M. Hughes et al, Placenta. 2013 Sep;34(9):831-5. PMID: 23830620.

Immunofluorescence: Strong expression of the protein seen in the membrane of NIH3T3 cells. Recommended concentration: 10µg/ml

Flow Cytometry: Flow cytometric analysis of NIH3T3 cells. Recommended concentration: 10ug/ml.

Species Reactivity

Tested: Mouse

Expected from sequence similarity: Mouse

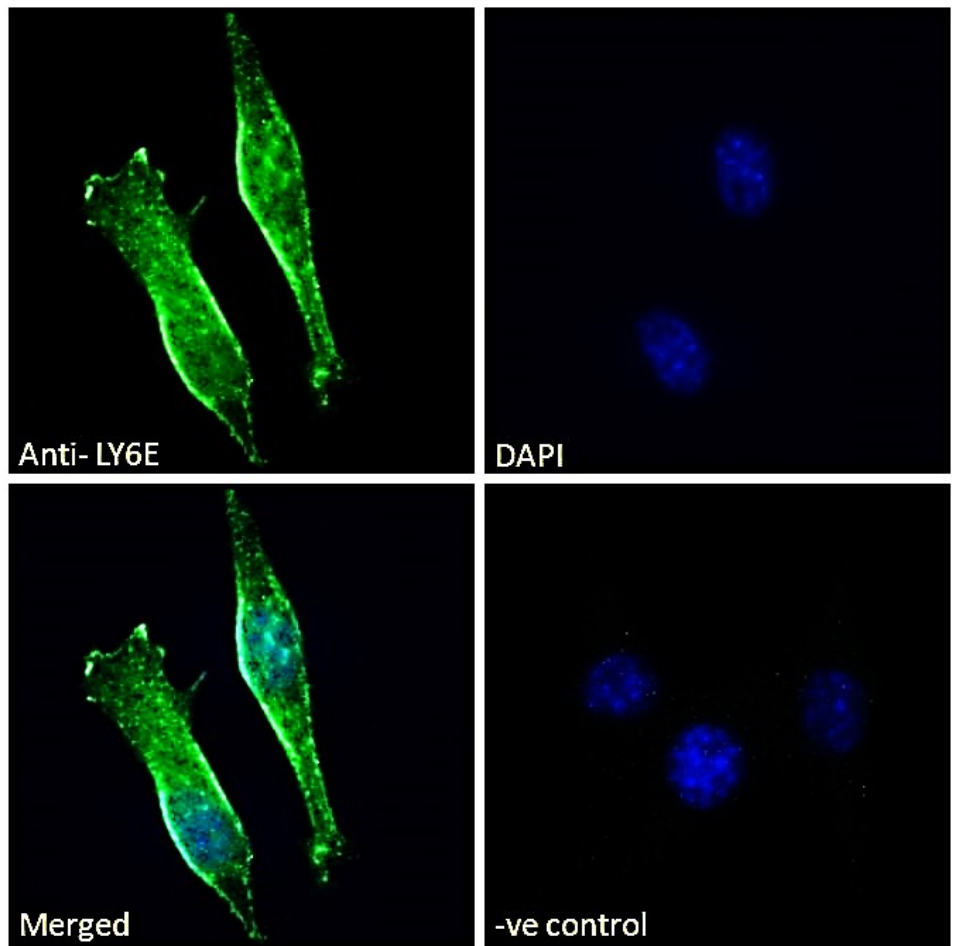
Specific Reference

This antibody has been successfully used in IHC on Mouse:

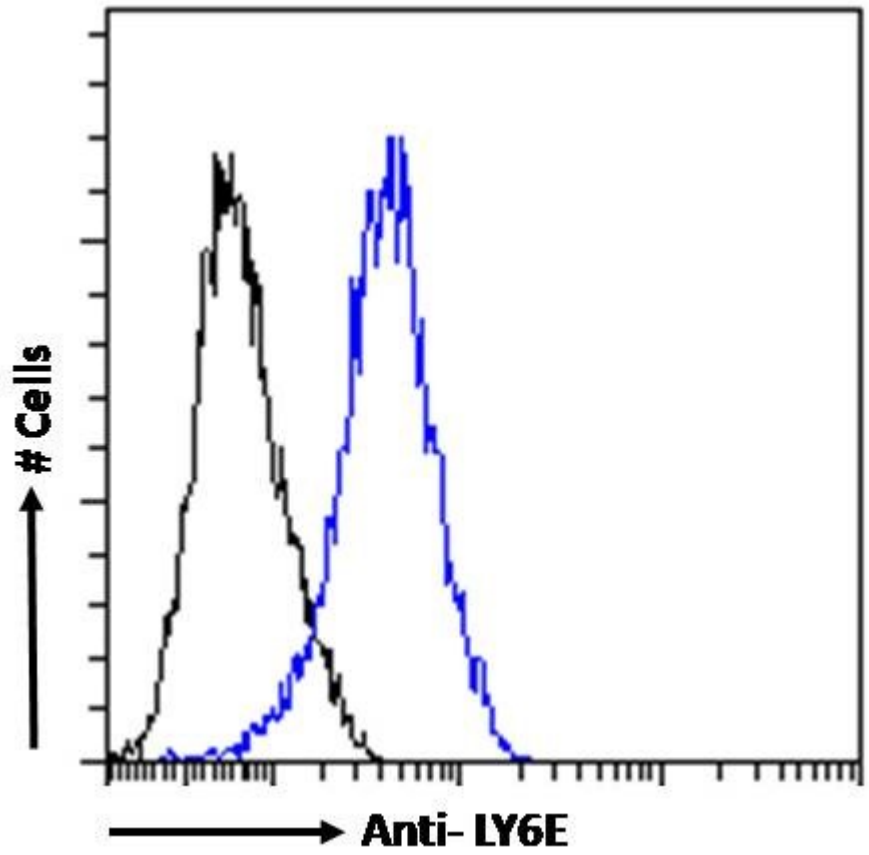
M. Hughes, B.V. Natale, D.G. Simmons, D.R.C. Natale

Ly6e expression is restricted to syncytiotrophoblast cells of the mouse placenta Placenta. 2013 Sep;34(9):831-5.

PMID: 23830620



EB10216 Immunofluorescence analysis of paraformaldehyde fixed NIH3T3 cells, permeabilized with 0.15% Triton. Primary incubation 1hr (10ug/ml) followed by Alexa Fluor 488 secondary antibody (2ug/ml), showing membrane staining. The nuclear stain is DAPI (blue). Negative control: Unimmunized goat IgG (10ug/ml) followed by Alexa Fluor 488 secondary antibody (2ug/ml).



EB10216 Flow cytometric analysis of paraformaldehyde fixed NIH3T3 cells (blue line), permeabilized with 0.5% Triton. Primary incubation 1hr (10ug/ml) followed by Alexa Fluor 488 secondary antibody (1ug/ml). IgG control: Unimmunized goat IgG (black line) followed by Alexa Fluor 488 secondary antibody.