



SZABO SCANDIC

Part of Europa Biosite

Produktinformation



Forschungsprodukte & Biochemikalien



Zellkultur & Verbrauchsmaterial



Diagnostik & molekulare Diagnostik



Laborgeräte & Service

Weitere Information auf den folgenden Seiten!
See the following pages for more information!



Lieferung & Zahlungsart

siehe unsere [Liefer- und Versandbedingungen](#)

Zuschläge

- Mindermengenzuschlag
- Trockeneiszuschlag
- Gefahrgutzuschlag
- Expressversand

SZABO-SCANDIC HandelsgmbH

Quellenstraße 110, A-1100 Wien

T. +43(0)1 489 3961-0

F. +43(0)1 489 3961-7

mail@szabo-scandic.com

www.szabo-scandic.com

[linkedin.com/company/szaboscandic](https://www.linkedin.com/company/szaboscandic) 



UK Office

Everest Biotech Ltd

Cherwell Innovation Centre
77 Heyford Park
Upper Heyford
Oxfordshire
OX25 5HD
UK

Enquiries:

info@everestbiotech.com

Sales:

sales@everestbiotech.com

Tech support:

support@everestbiotech.com

Tel: +44 (0)1869 238326

Fax: +44 (0)1869 238327

US Office

Everest Biotech c/o Abcore

405 Maple Street, Suite A106
Ramona,
CA 92065
USA

Inquiries:

info@everestbiotech.com

Sales:

usasales@everestbiotech.com

Tech support:

support@everestbiotech.com

Tel: 888-320-4628 (toll-free)

Fax: 888-841-9041

www.everestbiotech.com

**Research Use Only. Not for
diagnostic or therapeutic use.**

EB10220 - Goat Anti-UCHL1 (aa 211-221) Antibody

Size: 100µg specific antibody in 200µl



Target Protein

Principal Names: neuron cytoplasmic protein 9.5, PARK5, PGP9.5, PGP95, ubiquitin carboxyl-terminal esterase L1, ubiquitin carboxyl-terminal esterase L1 (ubiquitin thiolesterase), ubiquitin C-terminal hydrolase, Uch-L1, UCHL1

Official Symbol: UCHL1

Accession Number(s): NP_004172.2

Human GeneID(s): [7345](#)

Non-Human GeneID(s): 22223 (mouse), 29545 (rat)

Immunogen

Peptide with sequence EVRFSAVALCK, from the C Terminus of the protein sequence according to NP_004172.2.

Please note the [peptide](#) is available for sale.

Purification and Storage

Purified from goat serum by ammonium sulphate precipitation followed by antigen affinity chromatography using the immunizing peptide.

Supplied at 0.5 mg/ml in Tris saline, 0.02% sodium azide, pH7.3 with 0.5% bovine serum albumin.

Aliquot and store at -20°C. Minimize freezing and thawing.

Applications Tested

Peptide ELISA: antibody detection limit dilution 1:1000.

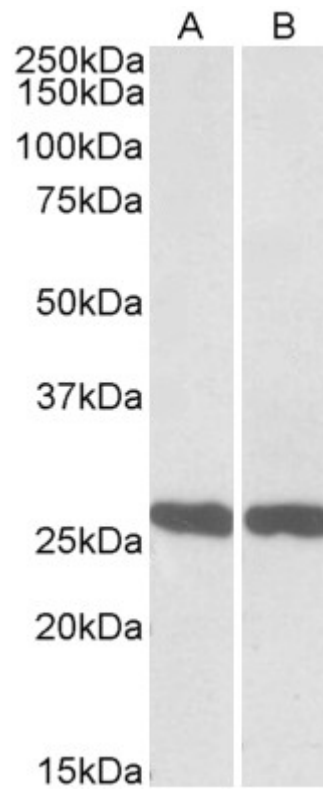
Western blot: Approx 26kDa band observed in Human Brain (Hippocampus) and Mouse and Rat Brain lysates (calculated MW of 24.8kDa according to Human NP_004172.2, Mouse NP_035800.2 and Rat NP_058933.2). Recommended concentration: 0.01-0.03µg/ml.

IHC: Paraffin embedded Human Testis. Recommended concentration: 5µg/ml.

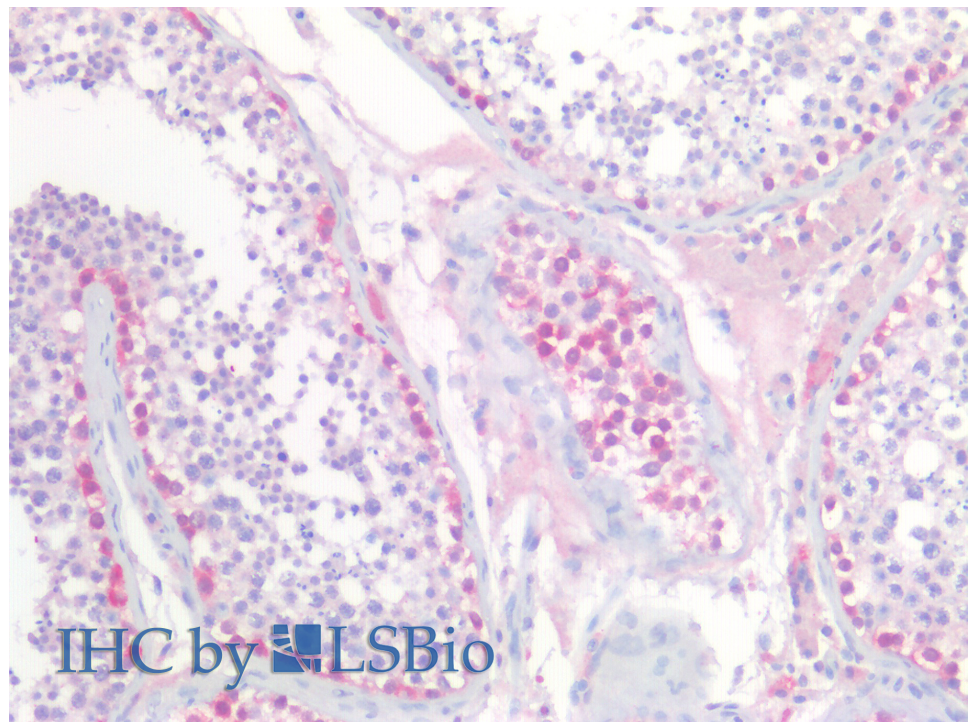
Species Reactivity

Tested: Human, Mouse, Rat

Expected from sequence similarity: Human, Mouse, Rat, Dog, Pig, Cow



EB10220 (0.01 μ g/ml) staining of Mouse (A) and Rat (B) Brain lysate (35 μ g protein in RIPA buffer). Primary incubation was 1 hour. Detected by chemiluminescence.



EB10220 (5 μ g/ml) staining of paraffin embedded Human Testis. Steamed antigen retrieval with citrate buffer pH 6, AP-staining.