



SZABO SCANDIC

Part of Europa Biosite

Produktinformation



Forschungsprodukte & Biochemikalien



Zellkultur & Verbrauchsmaterial



Diagnostik & molekulare Diagnostik



Laborgeräte & Service

Weitere Information auf den folgenden Seiten!
See the following pages for more information!



Lieferung & Zahlungsart

siehe unsere [Liefer- und Versandbedingungen](#)

Zuschläge

- Mindermengenzuschlag
- Trockeneiszuschlag
- Gefahrgutzuschlag
- Expressversand

SZABO-SCANDIC HandelsgmbH

Quellenstraße 110, A-1100 Wien

T. +43(0)1 489 3961-0

F. +43(0)1 489 3961-7

mail@szabo-scandic.com

www.szabo-scandic.com

[linkedin.com/company/szaboscandic](https://www.linkedin.com/company/szaboscandic) 



UK Office

Everest Biotech Ltd

Cherwell Innovation Centre
77 Heyford Park
Upper Heyford
Oxfordshire
OX25 5HD
UK

Enquiries:

info@everestbiotech.com

Sales:

sales@everestbiotech.com

Tech support:

support@everestbiotech.com

Tel: +44 (0)1869 238326

Fax: +44 (0)1869 238327

US Office

Everest Biotech c/o Abcore

405 Maple Street, Suite A106
Ramona,
CA 92065
USA

Inquiries:

info@everestbiotech.com

Sales:

usasales@everestbiotech.com

Tech support:

support@everestbiotech.com

Tel: 888-320-4628 (toll-free)

Fax: 888-841-9041

www.everestbiotech.com

**Research Use Only. Not for
diagnostic or therapeutic use.**

EB10498 - Goat Anti-PCBP1 (aa234-247) Antibody

Size: 100µg specific antibody in 200µl



Target Protein

Principal Names: alpha-CP1, heterogeneous nuclear ribonucleoprotein E1, heterogenous nuclear ribonucleoprotein E1, heterogenous nuclear ribonucleoprotein X, hnRNP-E1, hnRNP-X, HNRPE1, HNRPX, nucleic acid binding protein sub 2.3, poly(rC) binding protein 1, PCBP1

Official Symbol: PCBP1

Accession Number(s): CAA55016.1

Human GeneID(s): [5093](#)

Non-Human GeneID(s): 23983 (mouse), 500242 (rat)

Immunogen

Peptide with sequence C-ADLAKLNQVARQQSH, from the internal region of the protein sequence according to CAA55016.1.

Please note the [peptide](#) is available for sale.

Purification and Storage

Purified from goat serum by ammonium sulphate precipitation followed by antigen affinity chromatography using the immunizing peptide.

Supplied at 0.5 mg/ml in Tris saline, 0.02% sodium azide, pH7.3 with 0.5% bovine serum albumin.

Aliquot and store at -20°C. Minimize freezing and thawing.

Applications Tested

Peptide ELISA: antibody detection limit dilution 1:32000.

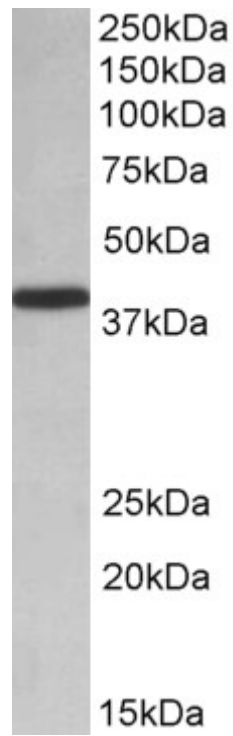
Western blot: Approx 38kDa band observed in lysates of cell line HeLa and in Human Placenta lysates (calculated MW of 37.5kDa according to NP_006187.2). Recommended concentration: 0.01-0.03µg/ml.

IHC: Paraffin embedded Human Lung (respiratory epithelium). Recommended concentration: 5µg/ml.

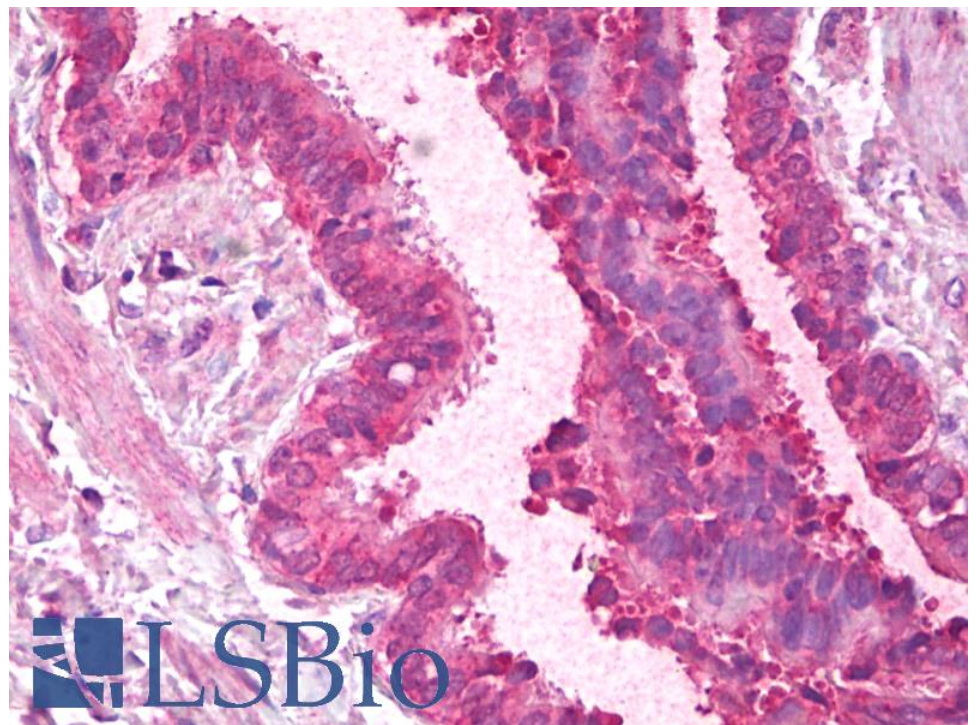
Species Reactivity

Tested: Human

Expected from sequence similarity: Human, Mouse, Rat, Dog, Pig, Cow



EB10498 (0.01µg/ml) staining of HeLa lysate (35µg protein in RIPA buffer). Primary incubation was 1 hour. Detected by chemiluminescence.



EB10498 (5µg/ml) staining of paraffin embedded Human Lung. Steamed antigen retrieval with citrate buffer Ph 6, AP-staining.