



SZABO SCANDIC

Part of Europa Biosite

Produktinformation



Forschungsprodukte & Biochemikalien



Zellkultur & Verbrauchsmaterial



Diagnostik & molekulare Diagnostik



Laborgeräte & Service

Weitere Information auf den folgenden Seiten!
See the following pages for more information!



Lieferung & Zahlungsart

siehe unsere [Liefer- und Versandbedingungen](#)

Zuschläge

- Mindermengenzuschlag
- Trockeneiszuschlag
- Gefahrgutzuschlag
- Expressversand

SZABO-SCANDIC HandelsgmbH

Quellenstraße 110, A-1100 Wien

T. +43(0)1 489 3961-0

F. +43(0)1 489 3961-7

mail@szabo-scandic.com

www.szabo-scandic.com

[linkedin.com/company/szaboscandic](https://www.linkedin.com/company/szaboscandic) 



UK Office

Everest Biotech Ltd

Cherwell Innovation Centre
77 Heyford Park
Upper Heyford
Oxfordshire
OX25 5HD
UK

Enquiries:

info@everestbiotech.com

Sales:

sales@everestbiotech.com

Tech support:

support@everestbiotech.com

Tel: +44 (0)1869 238326

Fax: +44 (0)1869 238327

US Office

Everest Biotech c/o Abcore

405 Maple Street, Suite A106
Ramona,
CA 92065
USA

Inquiries:

info@everestbiotech.com

Sales:

usasales@everestbiotech.com

Tech support:

support@everestbiotech.com

Tel: 888-320-4628 (toll-free)

Fax: 888-841-9041

www.everestbiotech.com

**Research Use Only. Not for
diagnostic or therapeutic use.**

EB10564 - Goat Anti-RUFY1 Antibody

Size: 100µg specific antibody in 200µl



Target Protein

Principal Names: RUFY1, RUN and FYVE domain containing 1, FLJ22251, RABIP4, ZFYVE12, FYVE-finger protein EIP1, OTTHUMP00000223250, RUN and FYVE domain-containing 1, RUN and FYVE domain-containing protein 1, rab4-interacting protein, zinc finger FYVE

Official Symbol: RUFY1

Accession Number(s): NP_079434.3; NP_001035541.1

Human GeneID(s): [80230](#)

Non-Human GeneID(s): 216724 (mouse), 360521 (rat)

Important Comments: This antibody is expected to recognize both reported isoforms (NP_079434.3; NP_001035541.1). Reported variants represent identical protein: NP_001035542.1, NP_001035541.1.

Immunogen

Peptide with sequence C-QKNEAITSFEGKT, from the internal region of the protein sequence according to NP_079434.3; NP_001035541.1.

Please note the [peptide](#) is available for sale.

Purification and Storage

Purified from goat serum by ammonium sulphate precipitation followed by antigen affinity chromatography using the immunizing peptide.

Supplied at 0.5 mg/ml in Tris saline, 0.02% sodium azide, pH7.3 with 0.5% bovine serum albumin.

Aliquot and store at -20°C. Minimize freezing and thawing.

Applications Tested

Peptide ELISA: antibody detection limit dilution 1:32000.

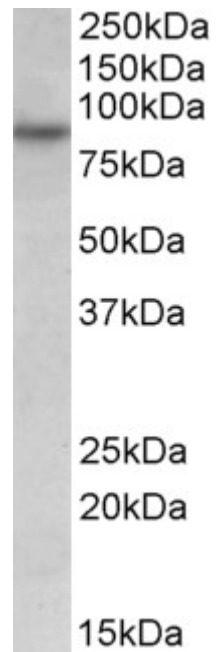
Western blot: Approx 85kDa band observed in lysates of cell line HeLa (calculated MW of 79.8kDa according to NP_079434.3). Recommended concentration: 0.05-0.2µg/ml. Primary incubation was 1 hour.

IHC: Paraffin embedded Human Small Intestine. Recommended concentration: 5µg/ml.

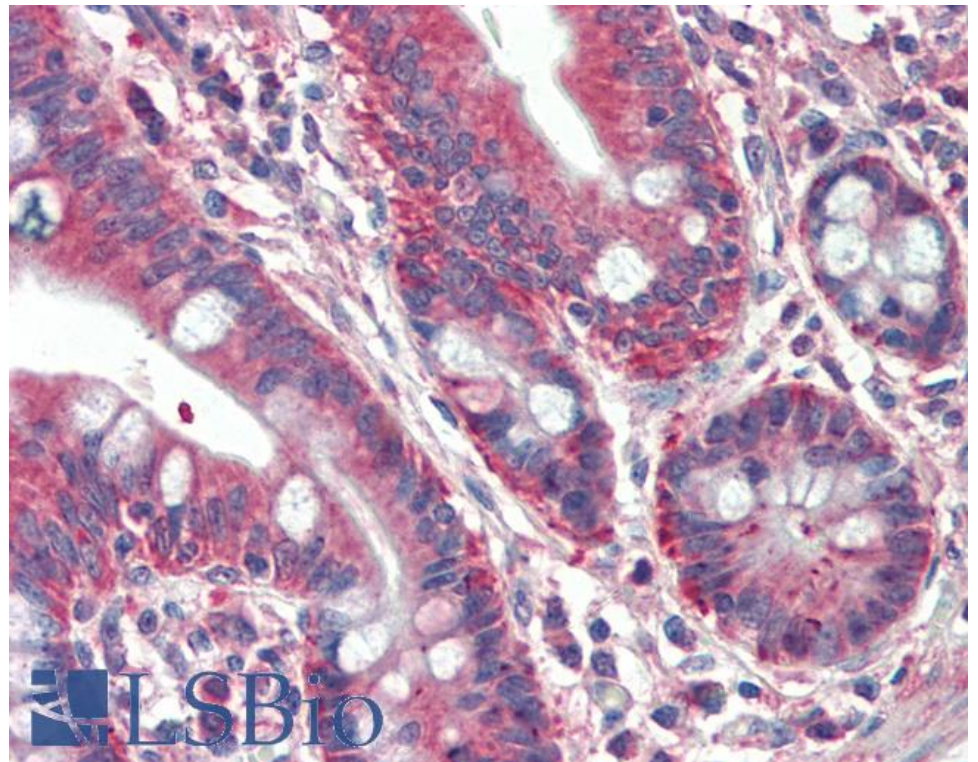
Species Reactivity

Tested: Human

Expected from sequence similarity: Human, Mouse, Rat, Dog, Cow



EB10564 (0.05µg/ml) staining of HeLa lysate (35µg protein in RIPA buffer). Detected by chemiluminescence.



EB10564 (5µg/ml) staining of paraffin embedded Human Small Intestine. Steamed antigen retrieval with citrate buffer Ph 6, AP-staining.