



SZABO SCANDIC

Part of Europa Biosite

Produktinformation



Forschungsprodukte & Biochemikalien



Zellkultur & Verbrauchsmaterial



Diagnostik & molekulare Diagnostik



Laborgeräte & Service

Weitere Information auf den folgenden Seiten!
See the following pages for more information!



Lieferung & Zahlungsart

siehe unsere [Liefer- und Versandbedingungen](#)

Zuschläge

- Mindermengenzuschlag
- Trockeneiszuschlag
- Gefahrgutzuschlag
- Expressversand

SZABO-SCANDIC HandelsgmbH

Quellenstraße 110, A-1100 Wien

T. +43(0)1 489 3961-0

F. +43(0)1 489 3961-7

mail@szabo-scandic.com

www.szabo-scandic.com

[linkedin.com/company/szaboscandic](https://www.linkedin.com/company/szaboscandic) 



UK Office

Everest Biotech Ltd

Cherwell Innovation Centre
77 Heyford Park
Upper Heyford
Oxfordshire
OX25 5HD
UK

Enquiries:

info@everestbiotech.com

Sales:

sales@everestbiotech.com

Tech support:

support@everestbiotech.com

Tel: +44 (0)1869 238326

Fax: +44 (0)1869 238327

US Office

Everest Biotech c/o Abcore

405 Maple Street, Suite A106
Ramona,
CA 92065
USA

Inquiries:

info@everestbiotech.com

Sales:

usasales@everestbiotech.com

Tech support:

support@everestbiotech.com

Tel: 888-320-4628 (toll-free)

Fax: 888-841-9041

www.everestbiotech.com

**Research Use Only. Not for
diagnostic or therapeutic use.**

EB10591 - Goat Anti-POLDIP2 Antibody

Size: 100µg specific antibody in 200µl



Target Protein

Principal Names: POLDIP2, polymerase (DNA-directed), delta interacting protein 2, DKFZp586F1524, PDIP38, POLD4, 38 kDa DNA polymerase delta interaction protein, p38, polymerase delta interacting protein 38, polymerase delta-interacting protein 2

Official Symbol: POLDIP2

Accession Number(s): NP_056399.1

Human GeneID(s): [26073](#)

Non-Human GeneID(s): 67811 (mouse)

Immunogen

Peptide with sequence KTHTYYQVLIDARDC, from the internal region of the protein sequence according to NP_056399.1.

Please note the [peptide](#) is available for sale.

Purification and Storage

Purified from goat serum by ammonium sulphate precipitation followed by antigen affinity chromatography using the immunizing peptide.

Supplied at 0.5 mg/ml in Tris saline, 0.02% sodium azide, pH7.3 with 0.5% bovine serum albumin.

Aliquot and store at -20°C. Minimize freezing and thawing.

Applications Tested

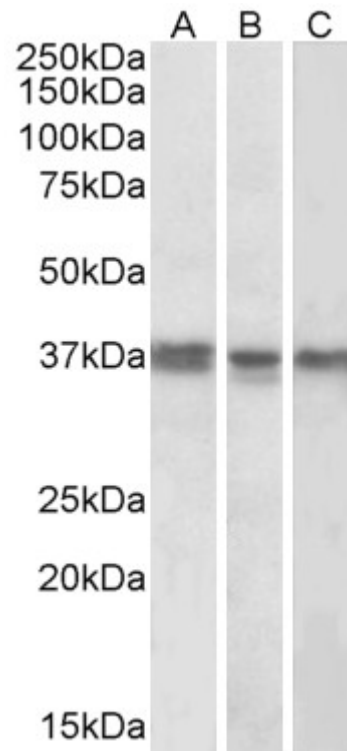
Peptide ELISA: antibody detection limit dilution 1:8000.

Western blot: Approx 37kDa band observed in lysates of cell lines K562 and MCF7 and of Mouse Liver (calculated MW of 42.0kDa according to NP_056399.1). Approx 37kDa band observed in Rat Vascular Smooth Muscle Cells lysates. The band diminished upon siRNA knock down. Recommended concentration: 1-3µg/ml.

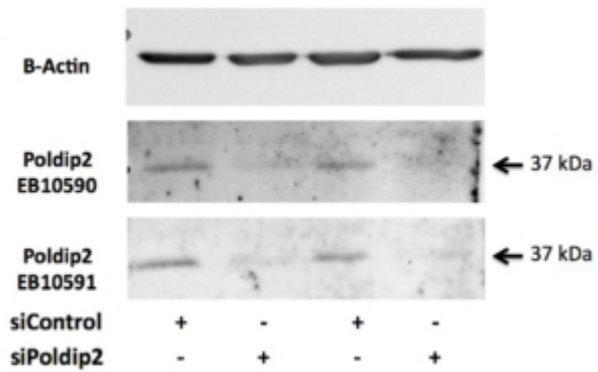
Species Reactivity

Tested: Human, Mouse, Rat

Expected from sequence similarity: Human, Rat, Dog, Cow



EB10591 (1µg/ml) staining of K562 (A), MCF7 (B) and Mouse Liver (C) lysates (35µg protein in RIPA buffer). Primary incubation was overnight at 4C. Detected by chemiluminescence.



EB10590 (0.5µg/ml) staining of Rat VSMC lysate (35µg protein in RIPA buffer). Primary incubation was overnight at 4C. Detected by chemiluminescence. Data provided by Everest Grant winner Dr. B. Lassegue, Emory University, Atlanta, USA



EB10591 (2 μ g/ml) staining of Mouse Liver lysate (35 μ g protein in RIPA buffer). Primary incubation was overnight at 4C. Detected by chemiluminescence.