



SZABO SCANDIC

Part of Europa Biosite

Produktinformation



Forschungsprodukte & Biochemikalien



Zellkultur & Verbrauchsmaterial



Diagnostik & molekulare Diagnostik



Laborgeräte & Service

Weitere Information auf den folgenden Seiten!
See the following pages for more information!



Lieferung & Zahlungsart

siehe unsere [Liefer- und Versandbedingungen](#)

Zuschläge

- Mindermengenzuschlag
- Trockeneiszuschlag
- Gefahrgutzuschlag
- Expressversand

SZABO-SCANDIC HandelsgmbH

Quellenstraße 110, A-1100 Wien

T. +43(0)1 489 3961-0

F. +43(0)1 489 3961-7

mail@szabo-scandic.com

www.szabo-scandic.com

[linkedin.com/company/szaboscandic](https://www.linkedin.com/company/szaboscandic) 



UK Office

Everest Biotech Ltd

Cherwell Innovation Centre
77 Heyford Park
Upper Heyford
Oxfordshire
OX25 5HD
UK

Enquiries:

info@everestbiotech.com

Sales:

sales@everestbiotech.com

Tech support:

support@everestbiotech.com

Tel: +44 (0)1869 238326

Fax: +44 (0)1869 238327

US Office

Everest Biotech c/o Abcore

405 Maple Street, Suite A106
Ramona,
CA 92065
USA

Inquiries:

info@everestbiotech.com

Sales:

usasales@everestbiotech.com

Tech support:

support@everestbiotech.com

Tel: 888-320-4628 (toll-free)

Fax: 888-841-9041

www.everestbiotech.com

**Research Use Only. Not for
diagnostic or therapeutic use.**

EB10619 - Goat Anti-Mucin 19 / Apomucin Antibody

Size: 100µg specific antibody in 200µl



Target Protein

Principal Names: Muc19, mucin 19, MUC-19, gel-forming secreted mucin-19, mucin-19, sublingual apomucin, mucin apoprotein

Official Symbol: Muc19

Accession Number(s): NP_997126.2

Non-Human GeneID(s): 239611 (mouse), 497227 (rat)

Immunogen

Peptide with sequence ECKRSVKYNYETFQ, from the C Terminus of the protein sequence according to NP_997126.2.

Please note the [peptide](#) is available for sale.

Purification and Storage

Purified from goat serum by ammonium sulphate precipitation followed by antigen affinity chromatography using the immunizing peptide.

Supplied at 0.5 mg/ml in Tris saline, 0.02% sodium azide, pH7.3 with 0.5% bovine serum albumin.

Aliquot and store at -20°C. Minimize freezing and thawing.

Applications Tested

Peptide ELISA: antibody detection limit dilution 1:128000.

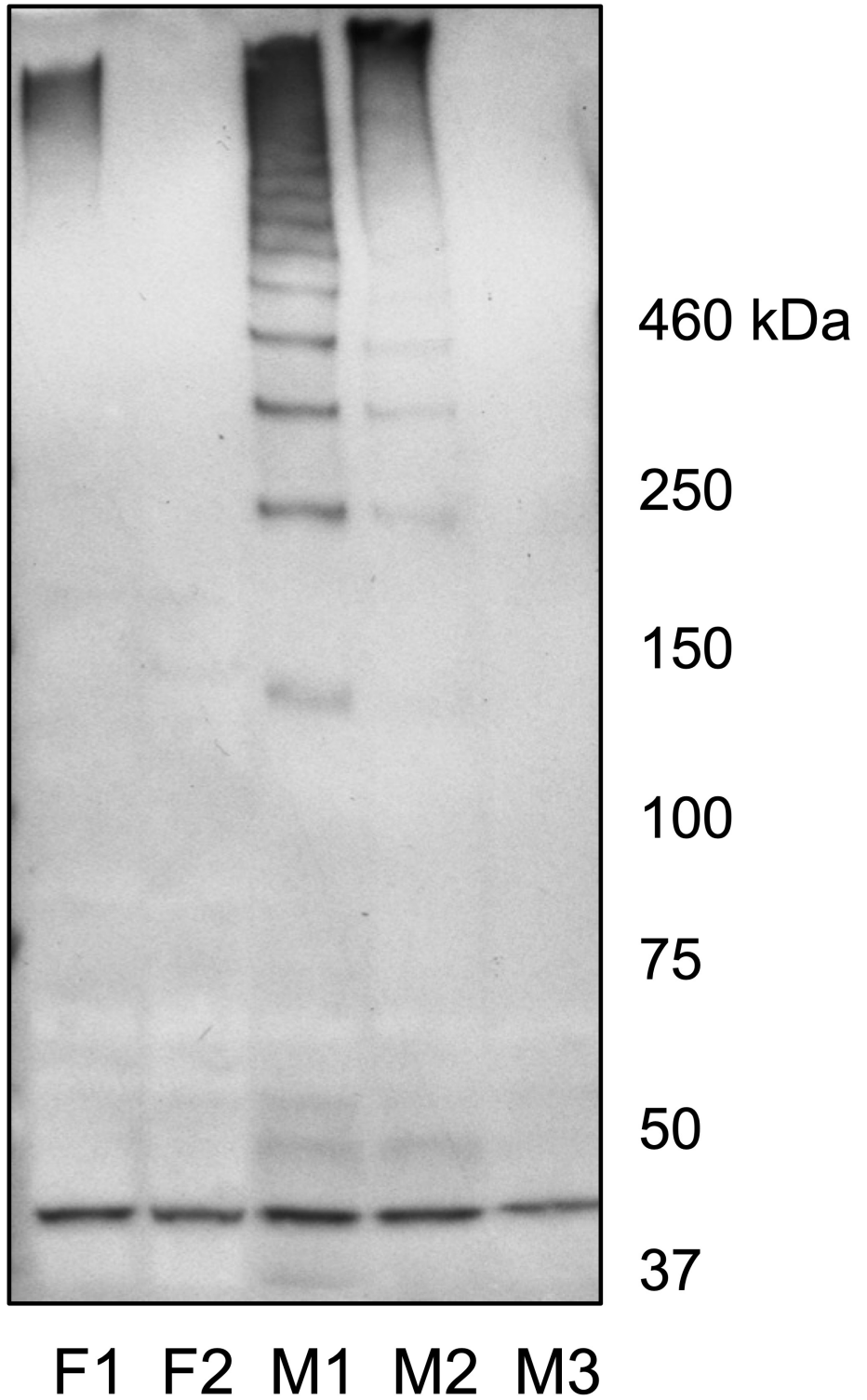
Western blot: A customer observed high MWt bands in salivary gland tissue from female or male C57BL/6 mice: Proteins were separated by electrophoresis through 3-8% gradient gels, transferred to nitrocellulose, and probed with primary antibody at 1:2000 dilution (0.25 µg/ml), followed by peroxidase-conjugated anti-goat at 1:50,000.

ICC/ IF: Positive staining in the sublingual salivary gland of the mouse, while cells remain negative in the submandibular salivary gland. Data provided by Everest Grant winner Melinda Larsen, State University of New York, Albany, NY.

Species Reactivity

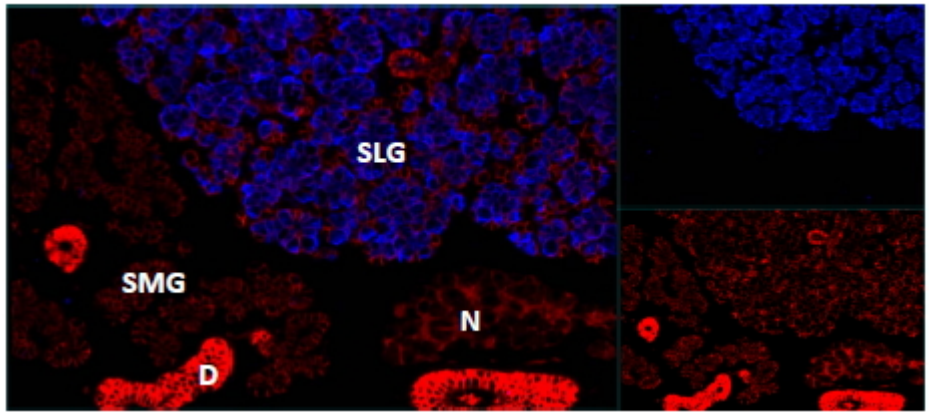
Tested: Mouse

Expected from sequence similarity: Mouse, Rat



EB10619 (0.25 $\mu\text{g/ml}$) staining of homogenized Mouse salivary gland tissue. (20 μg protein per lane). Detected by chemiluminescence.

MUC19 Na/K-ATPase



EB10619 (1.8ug/ml) staining cells of the sublingual salivary gland (SLG) in mouse, but not any cells of the submandibular salivary gland (SMG).