



SZABO SCANDIC

Part of Europa Biosite

Produktinformation



Forschungsprodukte & Biochemikalien



Zellkultur & Verbrauchsmaterial



Diagnostik & molekulare Diagnostik



Laborgeräte & Service

Weitere Information auf den folgenden Seiten!
See the following pages for more information!



Lieferung & Zahlungsart

siehe unsere [Liefer- und Versandbedingungen](#)

Zuschläge

- Mindermengenzuschlag
- Trockeneiszuschlag
- Gefahrgutzuschlag
- Expressversand

SZABO-SCANDIC HandelsgmbH

Quellenstraße 110, A-1100 Wien

T. +43(0)1 489 3961-0

F. +43(0)1 489 3961-7

mail@szabo-scandic.com

www.szabo-scandic.com

[linkedin.com/company/szaboscandic](https://www.linkedin.com/company/szaboscandic) 



UK Office

Everest Biotech Ltd

Cherwell Innovation Centre
77 Heyford Park
Upper Heyford
Oxfordshire
OX25 5HD
UK

Enquiries:

info@everestbiotech.com

Sales:

sales@everestbiotech.com

Tech support:

support@everestbiotech.com

Tel: +44 (0)1869 238326

Fax: +44 (0)1869 238327

US Office

Everest Biotech c/o Abcore

405 Maple Street, Suite A106
Ramona,
CA 92065
USA

Inquiries:

info@everestbiotech.com

Sales:

usasales@everestbiotech.com

Tech support:

support@everestbiotech.com

Tel: 888-320-4628 (toll-free)

Fax: 888-841-9041

www.everestbiotech.com

**Research Use Only. Not for
diagnostic or therapeutic use.**

EB10621 - Goat Anti-parotid secretory protein (mouse aa146-160) Antibody

Size: 100µg specific antibody in 200µl



Target Protein

Principal Names: Psp, parotid secretory protein, OTTMUSP00000018314, OTTMUSP00000036473, Bpifa2e

Official Symbol: Bpifa2

Accession Number(s): NP_032979.1

Non-Human GeneID(s): 19194 (mouse)

Immunogen

Peptide with sequence C-KTNAQTGLPEVTIGK, from the internal region of the protein sequence according to NP_032979.1.

Please note the [peptide](#) is available for sale.

Purification and Storage

Purified from goat serum by ammonium sulphate precipitation followed by antigen affinity chromatography using the immunizing peptide.

Supplied at 0.5 mg/ml in Tris saline, 0.02% sodium azide, pH7.3 with 0.5% bovine serum albumin.

Aliquot and store at -20°C. Minimize freezing and thawing.

Applications Tested

Peptide ELISA: antibody detection limit dilution 1:128000.

Western blot: Approx 25kDa band observed in Mouse mandibular glands from E17 onwards (calculated MW of 24.8kDa according to NP_032979.1). Recommended concentration: 1-3µg/ml. Data provided by Everest Grant winner Melinda Larsen, State University of New York, Albany, NY. This antibody has been successfully used in WB on Mouse, PMID: 32390232.

Immunocytochemistry: A subset of murine submandibular gland cells (E18) show specific staining in secretory granules. Recommended concentration 4µg/ml. Data provided by Everest Grant winner Melinda Larsen, State University of New York, Albany, NY.

Species Reactivity

Tested: Mouse

Expected from sequence similarity: Mouse

Specific References

This antibody has been successfully used in Western blot on Mouse:

Seshagiri Rao Nandula, Ian Huxford, Thomas T. Wheeler, Conrado Aparicio and Sven■Ulrik Gorr

The parotid secretory protein BPIFA2 is a salivary surfactant that affects lipopolysaccharide action

Exp Physiol. 2020 May 11. doi: 10.1113/EP088567

PMID: 32390232

This antibody has been successfully used in ICC/ IF on Mouse:

Tanaka, J., Ogawa, M., et al.

Generation of orthotopically functional salivary gland from embryonic stem cells. Nat Commun. 2018 Oct 11;9(1):4216.

PMID: 30310071

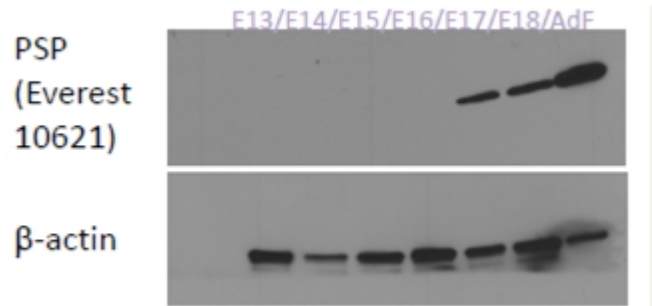
This antibody has been successfully used in IF on Mouse:

Ono H, Obana A, Usami Y, Sakai M, Nohara K, Egusa H, Sakai T.

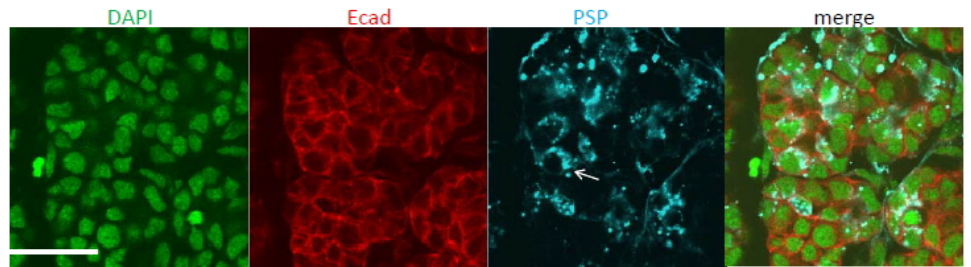
Regenerating Salivary Glands in the Microenvironment of Induced Pluripotent Stem Cells.

Biomed Res Int. 2015;2015:293570. doi: 10.1155/2015/293570. Epub 2015 Jun 22.

PMID: 26185754



EB10621 (1 μ g/ml) staining of Mouse Mandibular Gland cell lysates (35 μ g protein in RIPA buffer). Primary incubation was 1 hour. Detected by chemiluminescence (Super Signal).



EB10621 (4 μ g/ml) staining of Mouse Submandibular gland cells (in blue). Counter staining of Ecad in red and nuclear staining in green.