



# SZABO SCANDIC

Part of Europa Biosite

## Produktinformation



Forschungsprodukte & Biochemikalien



Zellkultur & Verbrauchsmaterial



Diagnostik & molekulare Diagnostik



Laborgeräte & Service

Weitere Information auf den folgenden Seiten!  
See the following pages for more information!



### Lieferung & Zahlungsart

siehe unsere [Liefer- und Versandbedingungen](#)

### Zuschläge

- Mindermengenzuschlag
- Trockeneiszuschlag
- Gefahrgutzuschlag
- Expressversand

### SZABO-SCANDIC HandelsgmbH

Quellenstraße 110, A-1100 Wien

T. +43(0)1 489 3961-0

F. +43(0)1 489 3961-7

[mail@szabo-scandic.com](mailto:mail@szabo-scandic.com)

[www.szabo-scandic.com](http://www.szabo-scandic.com)

[linkedin.com/company/szaboscandic](https://www.linkedin.com/company/szaboscandic) 



## UK Office

### Everest Biotech Ltd

Cherwell Innovation Centre  
77 Heyford Park  
Upper Heyford  
Oxfordshire  
OX25 5HD  
UK

Enquiries:

[info@everestbiotech.com](mailto:info@everestbiotech.com)

Sales:

[sales@everestbiotech.com](mailto:sales@everestbiotech.com)

Tech support:

[support@everestbiotech.com](mailto:support@everestbiotech.com)

Tel: +44 (0)1869 238326

Fax: +44 (0)1869 238327

## US Office

### Everest Biotech c/o Abcore

405 Maple Street, Suite A106  
Ramona,  
CA 92065  
USA

Inquiries:

[info@everestbiotech.com](mailto:info@everestbiotech.com)

Sales:

[usasales@everestbiotech.com](mailto:usasales@everestbiotech.com)

Tech support:

[support@everestbiotech.com](mailto:support@everestbiotech.com)

Tel: 888-320-4628 (toll-free)

Fax: 888-841-9041

[www.everestbiotech.com](http://www.everestbiotech.com)

**Research Use Only. Not for  
diagnostic or therapeutic use.**

## EB10644 - Goat Anti-RAN (aa 197-210) Antibody

Size: 100µg specific antibody in 200µl



### Target Protein

**Principal Names:** RAN, RAN, member RAS oncogene family, ARA24, Gsp1, TC4, GTP-binding nuclear protein Ran, GTPase Ran, OK/SW-cl.81, OTTHUMP00000166078, RanGTPase, androgen receptor-associated protein 24, guanosine triphosphatase Ran, member RAS oncogene

**Official Symbol:** RAN

**Accession Number(s):** NP\_006316.1

**Human GeneID(s):** [5901](#)

**Non-Human GeneID(s):** 19384 (mouse), 84509 (rat)

### Immunogen

Peptide with sequence C-YEHDLEVAQTTALP, from the C Terminus of the protein sequence according to NP\_006316.1.

Please note the [peptide](#) is available for sale.

### Purification and Storage

Purified from goat serum by ammonium sulphate precipitation followed by antigen affinity chromatography using the immunizing peptide.

Supplied at 0.5 mg/ml in Tris saline, 0.02% sodium azide, pH7.3 with 0.5% bovine serum albumin.

Aliquot and store at -20°C. Minimize freezing and thawing.

### Applications Tested

**Peptide ELISA:** antibody detection limit dilution 1:8000.

**Western blot:** Approx 25kDa band observed in Human, Mouse and Rat Testis lysates (calculated MW of 24.4kDa according to NP\_006316.1). Recommended concentration: 0.1-1µg/ml. Primary incubation was 1 hour.

**Immunofluorescence:** Strong expression of the protein seen in the cytoplasm and nuclei of A431 cells. Recommended concentration: 10µg/ml.

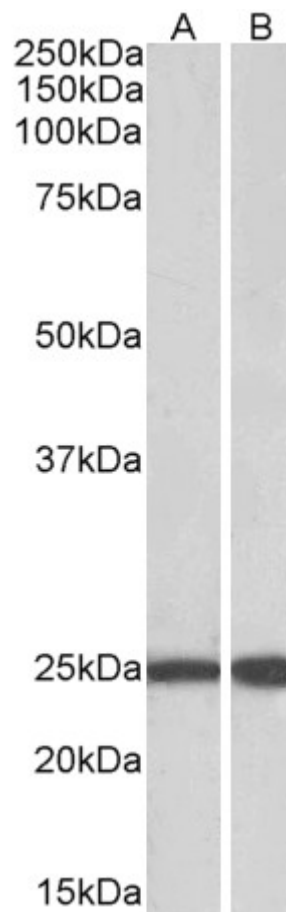
### Species Reactivity

**Tested:** Human, Mouse, Rat

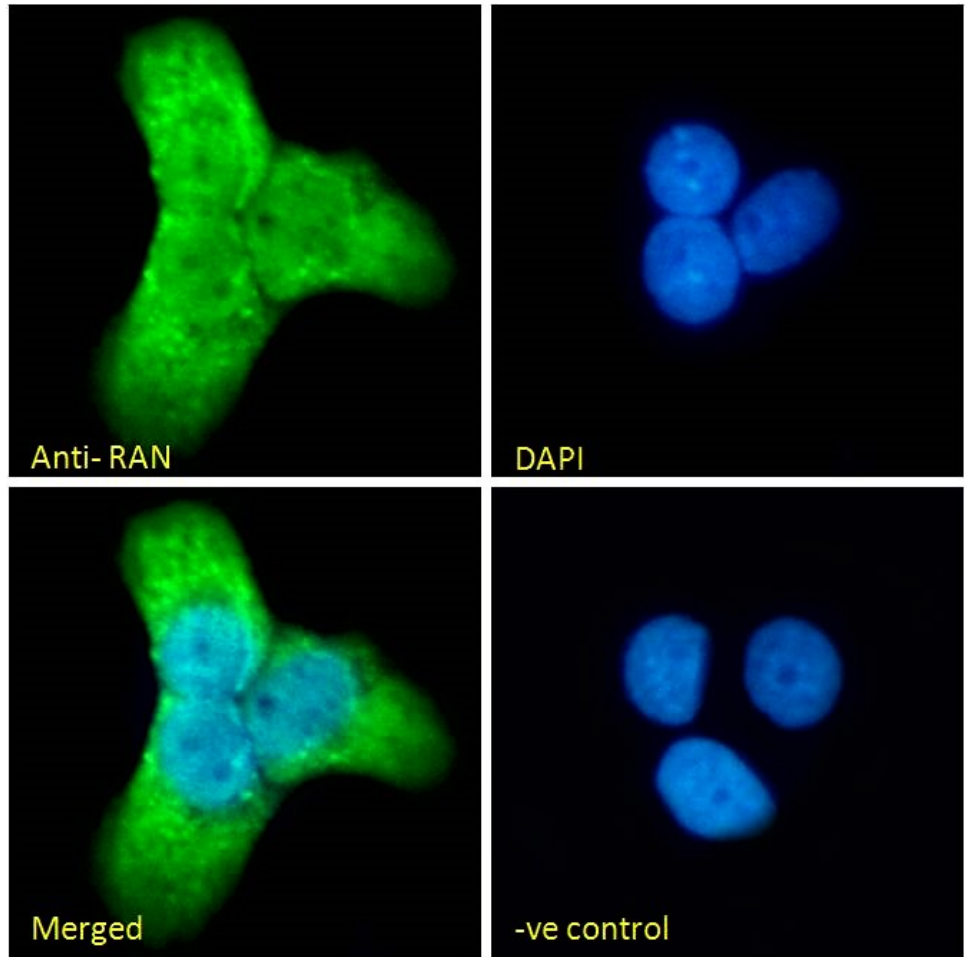
**Expected from sequence similarity:** Human, Mouse, Rat, Cow



EB10644 (1µg/ml) staining of Human Testis lysate (35µg protein in RIPA buffer). Detected by chemiluminescence.



EB10644 (0.1µg/ml) staining of Mouse (A) and Rat (B) Testis lysate (35µg protein in RIPA buffer). Detected by chemiluminescence.



EB10644 Immunofluorescence analysis of paraformaldehyde fixed A431 cells, permeabilized with 0.15% Triton. Primary incubation 1hr (10ug/ml) followed by Alexa Fluor 488 secondary antibody (2ug/ml), showing nuclear and cytoplasmic staining. The nuclear stain is DAPI (blue). Negative control: Unimmunized goat IgG (10ug/ml) followed by Alexa Fluor 488 secondary antibody (2ug/ml).