



SZABO SCANDIC

Part of Europa Biosite

Produktinformation



Forschungsprodukte & Biochemikalien



Zellkultur & Verbrauchsmaterial



Diagnostik & molekulare Diagnostik



Laborgeräte & Service

Weitere Information auf den folgenden Seiten!
See the following pages for more information!



Lieferung & Zahlungsart

siehe unsere [Liefer- und Versandbedingungen](#)

Zuschläge

- Mindermengenzuschlag
- Trockeneiszuschlag
- Gefahrgutzuschlag
- Expressversand

SZABO-SCANDIC HandelsgmbH

Quellenstraße 110, A-1100 Wien

T. +43(0)1 489 3961-0

F. +43(0)1 489 3961-7

mail@szabo-scandic.com

www.szabo-scandic.com

[linkedin.com/company/szaboscandic](https://www.linkedin.com/company/szaboscandic) 



UK Office

Everest Biotech Ltd

Cherwell Innovation Centre
77 Heyford Park
Upper Heyford
Oxfordshire
OX25 5HD
UK

Enquiries:

info@everestbiotech.com

Sales:

sales@everestbiotech.com

Tech support:

support@everestbiotech.com

Tel: +44 (0)1869 238326

Fax: +44 (0)1869 238327

US Office

Everest Biotech c/o Abcore

405 Maple Street, Suite A106
Ramona,
CA 92065
USA

Inquiries:

info@everestbiotech.com

Sales:

usasales@everestbiotech.com

Tech support:

support@everestbiotech.com

Tel: 888-320-4628 (toll-free)

Fax: 888-841-9041

www.everestbiotech.com

**Research Use Only. Not for
diagnostic or therapeutic use.**

EB10705 - Goat Anti-CRTC2 Antibody

Size: 100µg specific antibody in 200µl



Target Protein

Principal Names: Crtc2, CREB regulated transcription coactivator 2, 4632407F12Rik, Torc2, OTTMUSP00000023505, transducer of regulated cAMP response element-binding protein (CREB) 2

Official Symbol: CRTC2

Accession Number(s): NP_083157.1

Human GeneID(s): [200186](#)

Non-Human GeneID(s): 74343 (mouse), 310615 (rat)

Immunogen

Peptide with sequence C-DPAVEDSFRSDRLQ, from the C Terminus of the protein sequence according to NP_083157.1.

Please note the [peptide](#) is available for sale.

Purification and Storage

Purified from goat serum by ammonium sulphate precipitation followed by antigen affinity chromatography using the immunizing peptide.

Supplied at 0.5 mg/ml in Tris saline, 0.02% sodium azide, pH7.3 with 0.5% bovine serum albumin.

Aliquot and store at -20°C. Minimize freezing and thawing.

Applications Tested

Peptide ELISA: antibody detection limit dilution 1:64000.

Western blot: Approx 90kDa observed in lysates of cell line Jurkat and in preliminary testing of NIH3T3, and approx 85kDa in Rat Brain lysates and lysates of cell line A431 (calculated MW of 73.2kDa according to Human, NP_083157.1) and Rat NP_001029067.1). These molecular weights are routinely observed by other sources. Recommended concentration: 1-3µg/ml. Primary incubation 1 hour at room temperature.

Immunofluorescence: Strong expression of the protein seen in the nuclei of HeLa and U2OS cells. Recommended concentration: 10µg/ml.

Flow Cytometry: Flow cytometric analysis of HeLa cells. Recommended concentration: 10µg/ml.

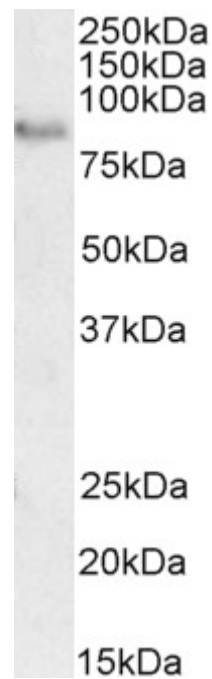
Species Reactivity

Tested: Human, Rat

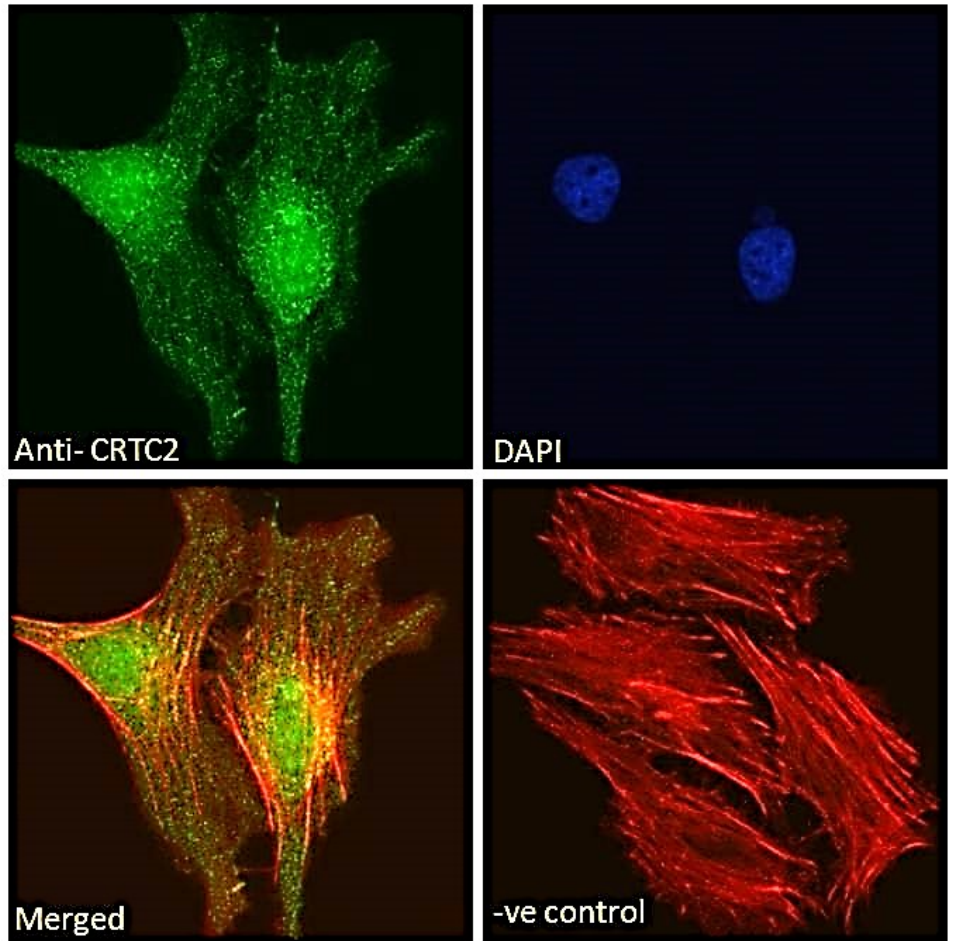
Expected from sequence similarity: Human, Mouse, Rat, Dog, Pig, Cow



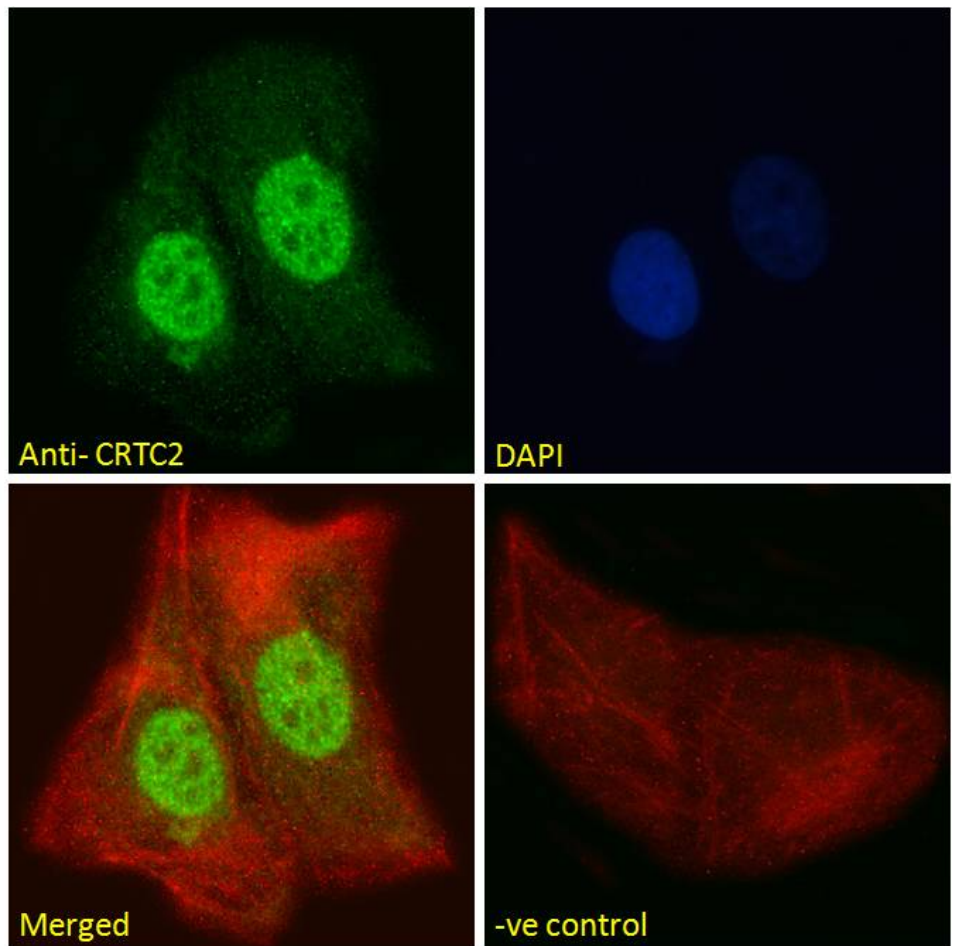
EB10705 (1 μ g/ml) staining of Jurkat (A) and (2 μ g/ml) A431 (B) cell lysate (35 μ g protein in RIPA buffer). Detected by chemiluminescence.



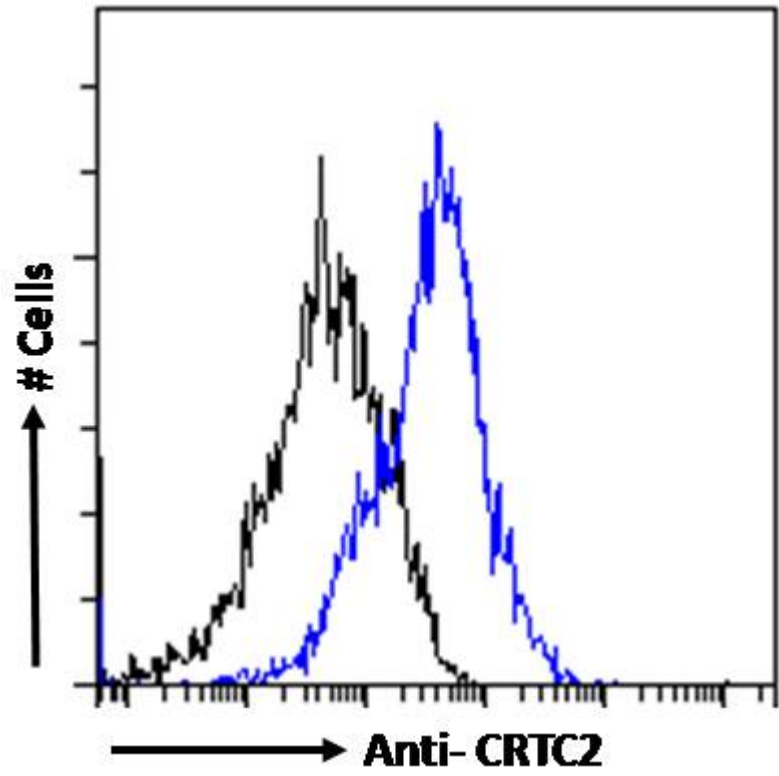
EB10705 (2 μ g/ml) staining of Rat Brain lysate (35 μ g protein in RIPA buffer). Detected by chemiluminescence.



EB10705 Immunofluorescence analysis of paraformaldehyde fixed HeLa cells, permeabilized with 0.15% Triton. Primary incubation 1hr (10ug/ml) followed by Alexa Fluor 488 secondary antibody (2ug/ml), showing strong nuclear staining. Actin filaments were stained with phalloidin (red) and the nuclear stain is DAPI (blue). Negative control: Unimmunized goat IgG (10ug/ml) followed by Alexa Fluor 488 secondary antibody (2ug/ml).



EB10705 Immunofluorescence analysis of paraformaldehyde fixed U2OS cells, permeabilized with 0.15% Triton. Primary incubation 1hr (10ug/ml) followed by Alexa Fluor 488 secondary antibody (2ug/ml), showing strong nuclear staining. Actin filaments were stained with phalloidin (red) and the nuclear stain is DAPI (blue). Negative control: Unimmunized goat IgG (10ug/ml) followed by Alexa Fluor 488 secondary antibody (2ug/ml).



EB10705 Flow cytometric analysis of paraformaldehyde fixed HeLa cells (blue line), permeabilized with 0.5% Triton. Primary incubation 1hr (10ug/ml) followed by Alexa Fluor 488 secondary antibody (1ug/ml). IgG control: Unimmunized goat IgG (black line) followed by Alexa Fluor 488 secondary antibody.