



SZABO SCANDIC

Part of Europa Biosite

Produktinformation



Forschungsprodukte & Biochemikalien



Zellkultur & Verbrauchsmaterial



Diagnostik & molekulare Diagnostik



Laborgeräte & Service

Weitere Information auf den folgenden Seiten!
See the following pages for more information!



Lieferung & Zahlungsart

siehe unsere [Liefer- und Versandbedingungen](#)

Zuschläge

- Mindermengenzuschlag
- Trockeneiszuschlag
- Gefahrgutzuschlag
- Expressversand

SZABO-SCANDIC HandelsgmbH

Quellenstraße 110, A-1100 Wien

T. +43(0)1 489 3961-0

F. +43(0)1 489 3961-7

mail@szabo-scandic.com

www.szabo-scandic.com

[linkedin.com/company/szaboscandic](https://www.linkedin.com/company/szaboscandic) 



UK Office

Everest Biotech Ltd

Cherwell Innovation Centre
77 Heyford Park
Upper Heyford
Oxfordshire
OX25 5HD
UK

Enquiries:

info@everestbiotech.com

Sales:

sales@everestbiotech.com

Tech support:

support@everestbiotech.com

Tel: +44 (0)1869 238326

Fax: +44 (0)1869 238327

US Office

Everest Biotech c/o Abcore

405 Maple Street, Suite A106
Ramona,
CA 92065
USA

Inquiries:

info@everestbiotech.com

Sales:

usasales@everestbiotech.com

Tech support:

support@everestbiotech.com

Tel: 888-320-4628 (toll-free)

Fax: 888-841-9041

www.everestbiotech.com

**Research Use Only. Not for
diagnostic or therapeutic use.**

EB10797 - Goat Anti-MOB2 (aa128-140) Antibody

Size: 100µg specific antibody in 200µl



Target Protein

Principal Names: MOB2, HCCA2, HCCA2 protein, mob2 homolog, mps one binder kinase activator-like 2

Official Symbol: MOB2

Accession Number(s): NP_001165694.1; NP_443731.2

Human GeneID(s): [81532](#)

Non-Human GeneID(s): 101513 (mouse), 499288 (rat)

Important Comments: This antibody is expected to recognize both reported isoforms (NP_001165694.1; NP_443731.2) only.

Immunogen

Peptide with sequence DERGKKVKCTAPQ, from the internal region of the protein sequence according to NP_001165694.1; NP_443731.2.

Please note the [peptide](#) is available for sale.

Purification and Storage

Purified from goat serum by ammonium sulphate precipitation followed by antigen affinity chromatography using the immunizing peptide.

Supplied at 0.5 mg/ml in Tris saline, 0.02% sodium azide, pH7.3 with 0.5% bovine serum albumin.

Aliquot and store at -20°C. Minimize freezing and thawing.

Applications Tested

Peptide ELISA: antibody detection limit dilution 1:128000.

Western blot: Approx 30kDa band observed in lysates of cell line Jurkat (calculated MW of 30.2kDa according to NP_001165694.1). Recommended concentration: 0.02-0.06µg/ml. An additional band of unknown identity was also consistently observed at 48kDa. This band was successfully blocked by incubation with the immunizing peptide. We would appreciate any feedback from people in the field - have any such results been reported with other antibodies/lysates? Have any further splice variants/modified forms been reported?

IHC: In paraffin embedded Human Lung shows staining of smooth muscle cells, vasculature and apical secretory granules in the epithelium of the bronchiole. Recommended concentration: 5-10µg/ml.

Species Reactivity

Tested: Human

Expected from sequence similarity: Human, Mouse, Rat, Dog, Cow

Specific Reference

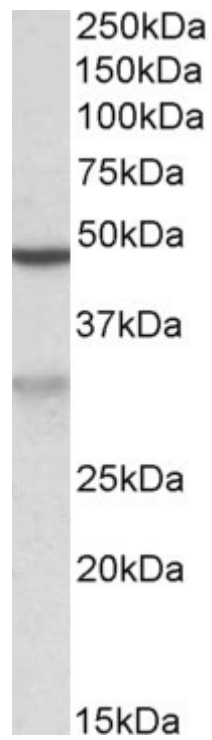
This antibody has been successfully used in Western blot on Rat:

Fang KM, Liu YY, Lin CH, Fan SS, Tsai CH, Tzeng SF.

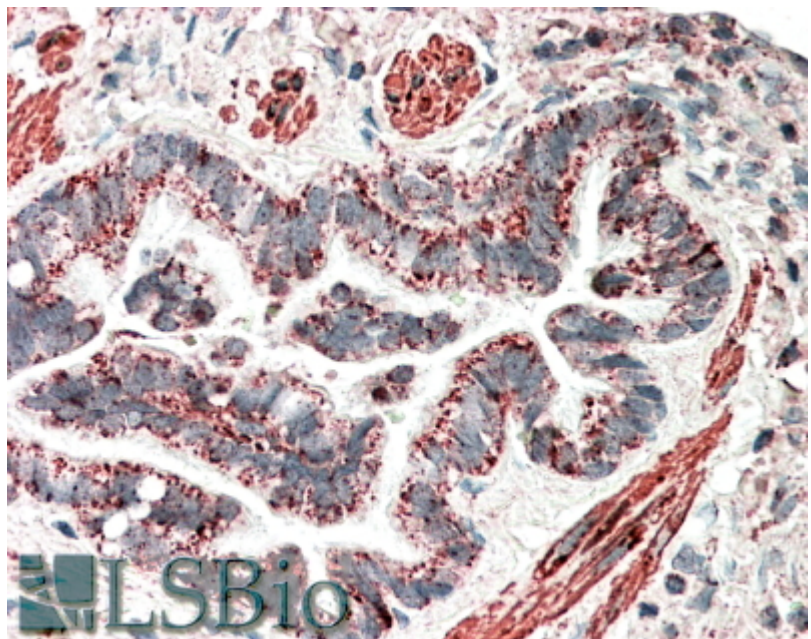
Mps one binder 2 gene upregulation in the stellation of astrocytes induced by cAMP-dependent pathway.

J Cell Biochem. 2012 Sep;113(9):3019-28. doi: 10.1002/jcb.24180.

PMID: 22566124



EB10797 (0.02 μ g/ml) staining of Jurkat lysate (35 μ g protein in RIPA buffer). Primary incubation was 1 hour. Detected by chemiluminescence.



EB10797 (5 μ g/ml) staining of paraffin embedded Human Lung. Steamed antigen retrieval with citrate buffer pH 6, AP-staining.