



SZABO SCANDIC

Part of Europa Biosite

Produktinformation



Forschungsprodukte & Biochemikalien



Zellkultur & Verbrauchsmaterial



Diagnostik & molekulare Diagnostik



Laborgeräte & Service

Weitere Information auf den folgenden Seiten!
See the following pages for more information!



Lieferung & Zahlungsart

siehe unsere [Liefer- und Versandbedingungen](#)

Zuschläge

- Mindermengenzuschlag
- Trockeneiszuschlag
- Gefahrgutzuschlag
- Expressversand

SZABO-SCANDIC HandelsgmbH

Quellenstraße 110, A-1100 Wien

T. +43(0)1 489 3961-0

F. +43(0)1 489 3961-7

mail@szabo-scandic.com

www.szabo-scandic.com

[linkedin.com/company/szaboscandic](https://www.linkedin.com/company/szaboscandic) 



UK Office

Everest Biotech Ltd

Cherwell Innovation Centre
77 Heyford Park
Upper Heyford
Oxfordshire
OX25 5HD
UK

Enquiries:

info@everestbiotech.com

Sales:

sales@everestbiotech.com

Tech support:

support@everestbiotech.com

Tel: +44 (0)1869 238326

Fax: +44 (0)1869 238327

US Office

Everest Biotech c/o Abcore

405 Maple Street, Suite A106
Ramona,
CA 92065
USA

Inquiries:

info@everestbiotech.com

Sales:

usasales@everestbiotech.com

Tech support:

support@everestbiotech.com

Tel: 888-320-4628 (toll-free)

Fax: 888-841-9041

www.everestbiotech.com

**Research Use Only. Not for
diagnostic or therapeutic use.**

EB10810 - Goat Anti-ZIC2 Antibody

Size: 100µg specific antibody in 200µl



Target Protein

Principal Names: ZIC2, Zic family member 2 (odd-paired homolog, Drosophila), HPE5, Zic family member 2 (odd-paired Drosophila homolog), Zinc finger protein of the cerebellum 2, zinc finger protein ZIC 2

Official Symbol: ZIC2

Accession Number(s): NP_009060.2

Human GeneID(s): [7546](#)

Non-Human GeneID(s): 22772 (mouse), 361096 (rat)

Important Comments: This antibody is expected to NOT cross-react with other ZIC proteins.

Immunogen

Peptide with sequence C-HSGLSSNFNEWY, from the C Terminus of the protein sequence according to NP_009060.2.

Please note the [peptide](#) is available for sale.

Purification and Storage

Purified from goat serum by ammonium sulphate precipitation followed by antigen affinity chromatography using the immunizing peptide.

Supplied at 0.5 mg/ml in Tris saline, 0.02% sodium azide, pH7.3 with 0.5% bovine serum albumin.

Aliquot and store at -20°C. Minimize freezing and thawing.

Applications Tested

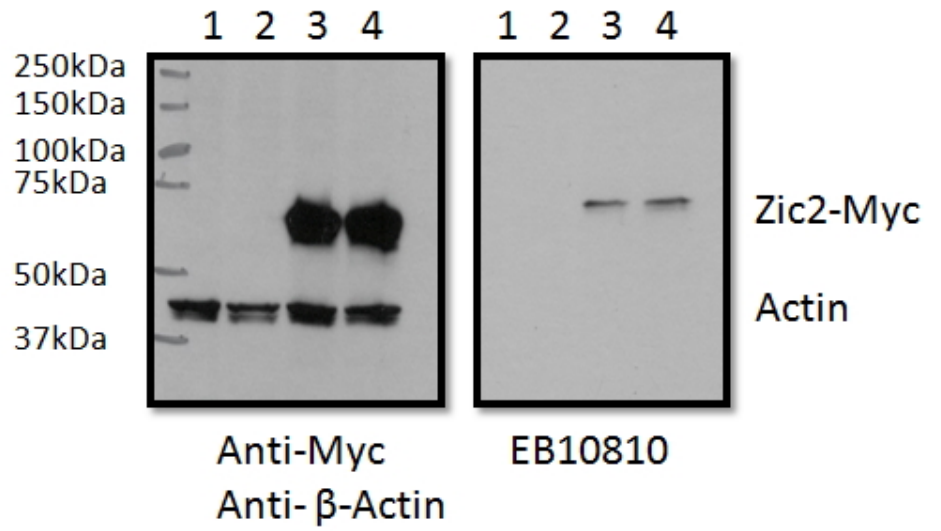
Peptide ELISA: antibody detection limit dilution 1:1000.

Western blot: In transfected RWPE1 transiently expressing Human ZIC2-Myc a band of approx. 65kDa is observed. This band is not observed in the non-transfected RWPE1, nor when GFP is transiently expressed. The calculated molecular size is 55.0kDa according to NP_009060.2 and 58.6kDa for the ZIC2-Myc protein. Data provided by Nathan Bowen and Maryam Boseman, Clark Atlanta University, GA, USA.. We have observed an approx 75kDa band in Human Brain (Cerebellum and Cerebral Cortex) lysates Recommended concentration, 0.5-2µg/ml.

Species Reactivity

Tested: Human

Expected from sequence similarity: Human, Mouse, Rat, Dog, Cow



RWPE1 lysate (60ug protein in RIPA buffer) overexpressing Human ZIC2 with C-terminal MYC tag probed with EB10810 (0.5ug/ml) in the right panel and probed with anti-MYC Tag (1/1000) and anti-beta-Actin in the left panel. Mock-transfected RWPE1 in lanes 1 and expressing GFP in lanes 2. Primary incubations were overnight at 4C. Detected by chemiluminescence.