



SZABO SCANDIC

Part of Europa Biosite

Produktinformation



Forschungsprodukte & Biochemikalien



Zellkultur & Verbrauchsmaterial



Diagnostik & molekulare Diagnostik



Laborgeräte & Service

Weitere Information auf den folgenden Seiten!
See the following pages for more information!



Lieferung & Zahlungsart

siehe unsere [Liefer- und Versandbedingungen](#)

Zuschläge

- Mindermengenzuschlag
- Trockeneiszuschlag
- Gefahrgutzuschlag
- Expressversand

SZABO-SCANDIC HandelsgmbH

Quellenstraße 110, A-1100 Wien

T. +43(0)1 489 3961-0

F. +43(0)1 489 3961-7

mail@szabo-scandic.com

www.szabo-scandic.com

[linkedin.com/company/szaboscandic](https://www.linkedin.com/company/szaboscandic) 



UK Office

Everest Biotech Ltd

Cherwell Innovation Centre
77 Heyford Park
Upper Heyford
Oxfordshire
OX25 5HD
UK

Enquiries:

info@everestbiotech.com

Sales:

sales@everestbiotech.com

Tech support:

support@everestbiotech.com

Tel: +44 (0)1869 238326

Fax: +44 (0)1869 238327

US Office

Everest Biotech c/o Abcore

405 Maple Street, Suite A106
Ramona,
CA 92065
USA

Inquiries:

info@everestbiotech.com

Sales:

usasales@everestbiotech.com

Tech support:

support@everestbiotech.com

Tel: 888-320-4628 (toll-free)

Fax: 888-841-9041

www.everestbiotech.com

**Research Use Only. Not for
diagnostic or therapeutic use.**

EB10841 - Goat Anti-Plakophilin 2 (aa125-139) Antibody

Size: 100µg specific antibody in 200µl



Target Protein

Principal Names: PKP2, plakophilin 2, ARVD9, MGC177501, plakophilin-2

Official Symbol: PKP2

Accession Number(s): NP_001005242.2; NP_004563.2

Human GeneID(s): [5318](#)

Non-Human GeneID(s): 67451 (mouse), 287925 (rat)

Important Comments: This antibody is expected to recognize both reported isoforms (NP_001005242.2; NP_004563.2).

Immunogen

Peptide with sequence C-RGTAQYSSQKSVEER, from the internal region of the protein sequence according to NP_001005242.2; NP_004563.2.

Please note the [peptide](#) is available for sale.

Purification and Storage

Purified from goat serum by ammonium sulphate precipitation followed by antigen affinity chromatography using the immunizing peptide.

Supplied at 0.5 mg/ml in Tris saline, 0.02% sodium azide, pH7.3 with 0.5% bovine serum albumin.

Aliquot and store at -20°C. Minimize freezing and thawing.

Applications Tested

Peptide ELISA: antibody detection limit dilution 1:16000.

Western blot: Approx 100kDa band observed in Mouse Heart lysates (calculated MW of 88.1kDa according to Mouse NP_080439.1 and 87.8kDa according to Rat NP_001093969.1). Recommended concentration: 0.3-1µg/ml. Primary incubation was 1 hour. This antibody has been successfully used in WB on Mouse, PMID: 37833253.

IHC: Paraffin embedded Human Prostate. Recommended concentration: 3.75µg/ml.

Species Reactivity

Tested: Human, Mouse

Expected from sequence similarity: Human, Mouse, Rat, Dog, Cow

Specific Reference

This antibody has been successfully used in Western blot on Mouse:

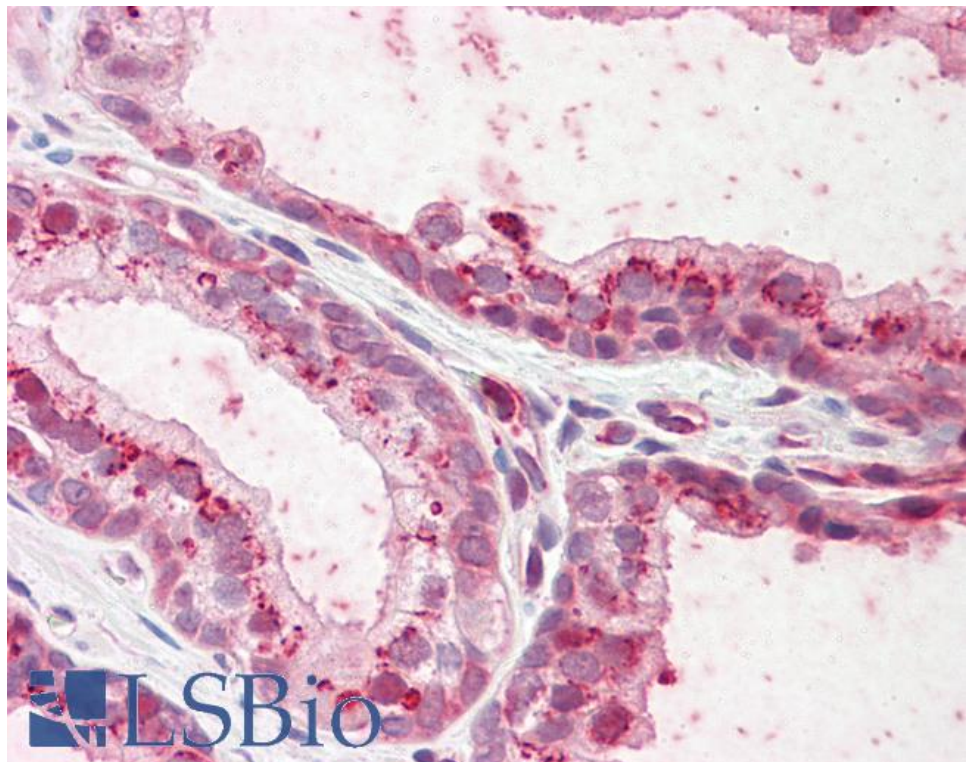
Nieves García-Quintáns, Silvia Sacristán, Cristina Márquez-López, Cristina Sánchez-Ramos, Fernando Martínez-de-Benito, David Siniscalco, Andrés González-Guerra, Emilio Camafeita, Marta Roche-Molina, Mariya Lytvyn, David Morera, María I. Guillen, María A. Sanguino, David Sanz-Rosa, Daniel Martín-Pérez, Ricardo Garcia & Juan A. Berna

MYH10 activation rescues contractile defects in arrhythmogenic cardiomyopathy (ACM). Nat Commun. 2023 Oct 13;14(1):6461.

PMID: 37833253



EB10841 (0.3 μ g/ml) staining of Mouse Heart lysate (35 μ g protein in RIPA buffer). Detected by chemiluminescence.



EB10841 (3.75 μ g/ml) staining of paraffin embedded Human Prostate. Steamed antigen retrieval with citrate buffer pH 6, AP-staining.