



SZABO SCANDIC

Part of Europa Biosite

Produktinformation



Forschungsprodukte & Biochemikalien



Zellkultur & Verbrauchsmaterial



Diagnostik & molekulare Diagnostik



Laborgeräte & Service

Weitere Information auf den folgenden Seiten!
See the following pages for more information!



Lieferung & Zahlungsart

siehe unsere [Liefer- und Versandbedingungen](#)

Zuschläge

- Mindermengenzuschlag
- Trockeneiszuschlag
- Gefahrgutzuschlag
- Expressversand

SZABO-SCANDIC HandelsgmbH

Quellenstraße 110, A-1100 Wien

T. +43(0)1 489 3961-0

F. +43(0)1 489 3961-7

mail@szabo-scandic.com

www.szabo-scandic.com

[linkedin.com/company/szaboscandic](https://www.linkedin.com/company/szaboscandic) 



UK Office

Everest Biotech Ltd

Cherwell Innovation Centre
77 Heyford Park
Upper Heyford
Oxfordshire
OX25 5HD
UK

Enquiries:

info@everestbiotech.com

Sales:

sales@everestbiotech.com

Tech support:

support@everestbiotech.com

Tel: +44 (0)1869 238326

Fax: +44 (0)1869 238327

US Office

Everest Biotech c/o Abcore

405 Maple Street, Suite A106
Ramona,
CA 92065
USA

Inquiries:

info@everestbiotech.com

Sales:

usasales@everestbiotech.com

Tech support:

support@everestbiotech.com

Tel: 888-320-4628 (toll-free)

Fax: 888-841-9041

www.everestbiotech.com

**Research Use Only. Not for
diagnostic or therapeutic use.**

EB10878 - Goat Anti-TXNDC5 (aa269-282) Antibody

Size: 100µg specific antibody in 200µl



Target Protein

Principal Names: TXNDC5, thioredoxin domain containing 5 (endoplasmic reticulum), ERP46, EndoPDI, Hcc-2, MGC3178, PDIA15, UNQ364, ER protein 46, endoplasmic reticulum resident protein 46, endothelial protein disulphide isomerase, endoplasmic reticulum protein ERp46, protein disulfide isomerase family A, member 15, thioredoxin domain-containing protein 5, thioredoxin related protein, thioredoxin-like protein p46

Official Symbol: TXNDC5

Accession Number(s): NP_110437.2; NP_001139021.1

Human GeneID(s): [81567](#)

Non-Human GeneID(s): 105245 (mouse)

Important Comments: This antibody is expected to recognize both reported isoforms (NP_110437.2; NP_001139021.1).

Immunogen

Peptide with sequence C-RDGKKVDQYK GKRD, from the internal region of the protein sequence according to NP_110437.2; NP_001139021.1.

Please note the [peptide](#) is available for sale.

Purification and Storage

Purified from goat serum by ammonium sulphate precipitation followed by antigen affinity chromatography using the immunizing peptide.

Supplied at 0.5 mg/ml in Tris saline, 0.02% sodium azide, pH7.3 with 0.5% bovine serum albumin.

Aliquot and store at -20°C. Minimize freezing and thawing.

Applications Tested

Peptide ELISA: antibody detection limit dilution 1:64000.

Western blot: Approx 50+38kDa bands observed in Human Lymph Nodes lysates (calculated MW of 47.6kDa according to NP_110437.2 and of 36.2kDa according to NP_001139021.1). A 48kDa band was observed in Mouse Lymph Node while a 37-38kDa doublet was observed in Mouse Stomach lysates and in Mouse Intestine lysates.

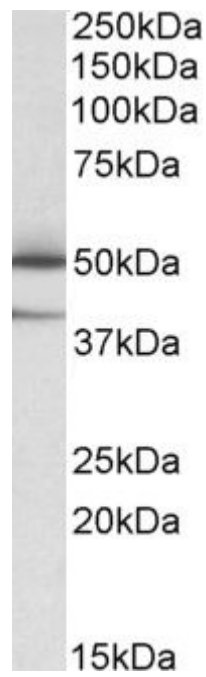
Recommended concentration: 0.03-0.1µg/ml. Primary incubation was 1 hour.

IHC: Paraffin embedded Human Small Intestine. Recommended concentration: 3.75µg/ml.

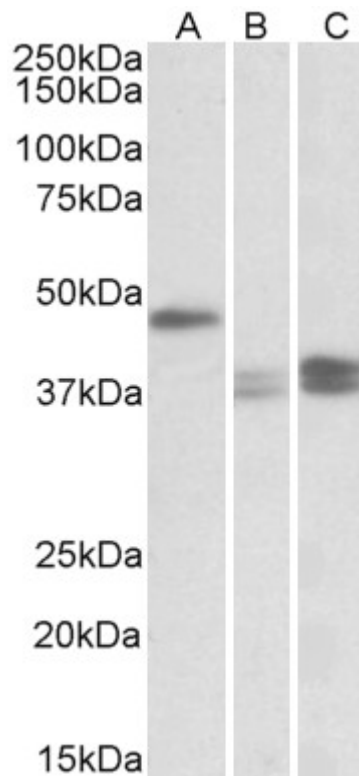
Species Reactivity

Tested: Human, Mouse

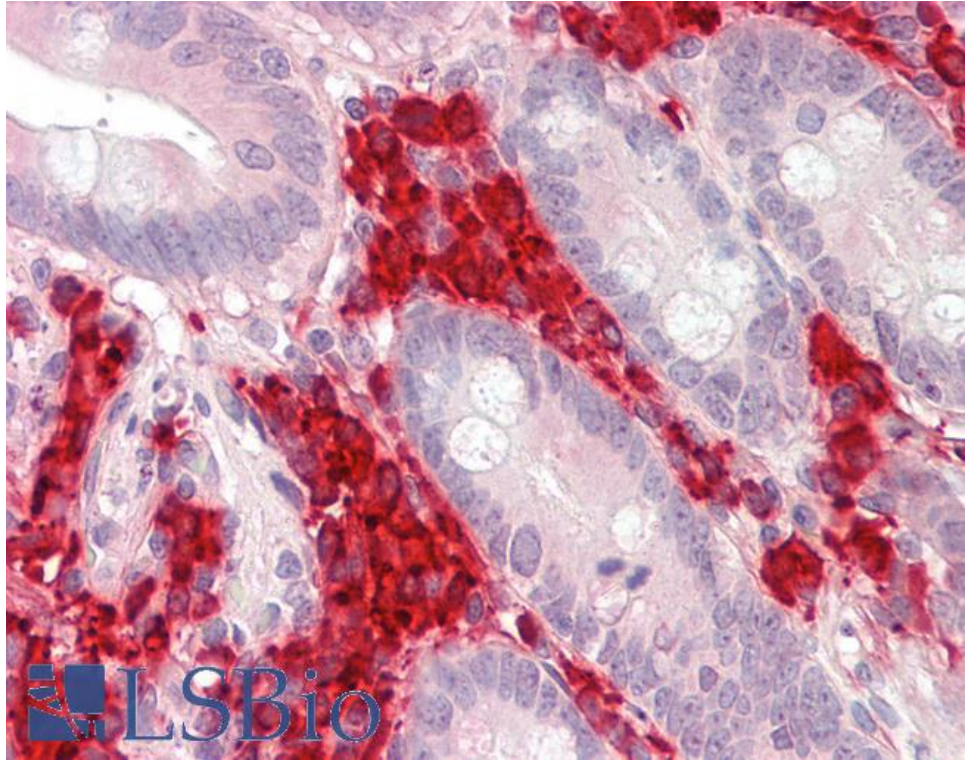
Expected from sequence similarity: Human, Mouse, Cow



EB10878 (0.05 μ g/ml) staining of Human Lymph Nodes lysate (35 μ g protein in RIPA buffer). Detected by chemiluminescence.



EB10878 (0.1 μ g/ml) staining of Mouse Lymph Nodes (A), Stomach (B) and Intestine (C) lysates (35 μ g protein in RIPA buffer). Detected by chemiluminescence.



EB10878 (3.75µg/ml) staining of paraffin embedded Human Small Intestine. Steamed antigen retrieval with citrate buffer pH 6, AP-staining.