



SZABO SCANDIC

Part of Europa Biosite

Produktinformation



Forschungsprodukte & Biochemikalien



Zellkultur & Verbrauchsmaterial



Diagnostik & molekulare Diagnostik



Laborgeräte & Service

Weitere Information auf den folgenden Seiten!
See the following pages for more information!



Lieferung & Zahlungsart

siehe unsere [Liefer- und Versandbedingungen](#)

Zuschläge

- Mindermengenzuschlag
- Trockeneiszuschlag
- Gefahrgutzuschlag
- Expressversand

SZABO-SCANDIC HandelsgmbH

Quellenstraße 110, A-1100 Wien

T. +43(0)1 489 3961-0

F. +43(0)1 489 3961-7

mail@szabo-scandic.com

www.szabo-scandic.com

[linkedin.com/company/szaboscandic](https://www.linkedin.com/company/szaboscandic) 



UK Office

Everest Biotech Ltd

Cherwell Innovation Centre
77 Heyford Park
Upper Heyford
Oxfordshire
OX25 5HD
UK

Enquiries:

info@everestbiotech.com

Sales:

sales@everestbiotech.com

Tech support:

support@everestbiotech.com

Tel: +44 (0)1869 238326

Fax: +44 (0)1869 238327

US Office

Everest Biotech c/o Abcore

405 Maple Street, Suite A106
Ramona,
CA 92065
USA

Inquiries:

info@everestbiotech.com

Sales:

usasales@everestbiotech.com

Tech support:

support@everestbiotech.com

Tel: 888-320-4628 (toll-free)

Fax: 888-841-9041

www.everestbiotech.com

**Research Use Only. Not for
diagnostic or therapeutic use.**

EB10879 - Goat Anti-TXNDC5 (aa281-295) Antibody

Size: 100µg specific antibody in 200µl



Target Protein

Principal Names: TXNDC5, thioredoxin domain containing 5 (endoplasmic reticulum), ERP46, EndoPDI, Hcc-2, MGC3178, PDIA15, UNQ364, ER protein 46, endoplasmic reticulum protein ERp46, endoplasmic reticulum resident protein 46, endothelial protein disulphide isomerase, protein disulfide isomerase family A, member 15, thioredoxin domain-containing protein 5, thioredoxin related protein, thioredoxin-like protein p46

Official Symbol: TXNDC5

Accession Number(s): NP_110437.2; NP_001139021.1

Human GeneID(s): [81567](#)

Non-Human GeneID(s): 105245 (mouse)

Important Comments: This antibody is expected to recognize both reported isoforms (NP_110437.2; NP_001139021.1).

Immunogen

Peptide with sequence C-RDLESLREYVESQLQ, from the internal region of the protein sequence according to NP_110437.2; NP_001139021.1.

Please note the [peptide](#) is available for sale.

Purification and Storage

Purified from goat serum by ammonium sulphate precipitation followed by antigen affinity chromatography using the immunizing peptide.

Supplied at 0.5 mg/ml in Tris saline, 0.02% sodium azide, pH7.3 with 0.5% bovine serum albumin.

Aliquot and store at -20°C. Minimize freezing and thawing.

Applications Tested

Peptide ELISA: antibody detection limit dilution 1:16000.

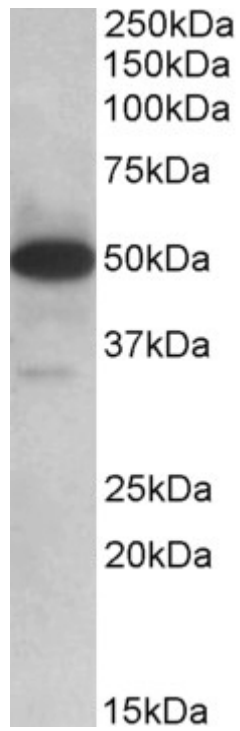
Western blot: Approx 50kDa plus faint 35kDa bands observed in Human Lymph Nodes lysates and 48kDa in Mouse Lymph Node and in Mouse Intestine lysates (calculated MW of 47.6kDa according to Human NP_110437.2, 46.4kDa to Mouse NP_663342.3) and of 36.2kDa according to Human NP_001139021.1. Recommended concentration: 0.1-0.3µg/ml. Primary incubation was 1 hour.

IHC: Paraffin embedded Human Small Intestine. Recommended concentration: 3.75µg/ml.

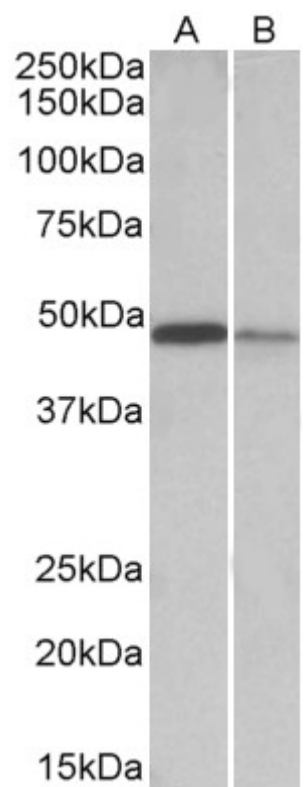
Species Reactivity

Tested: Human, Mouse

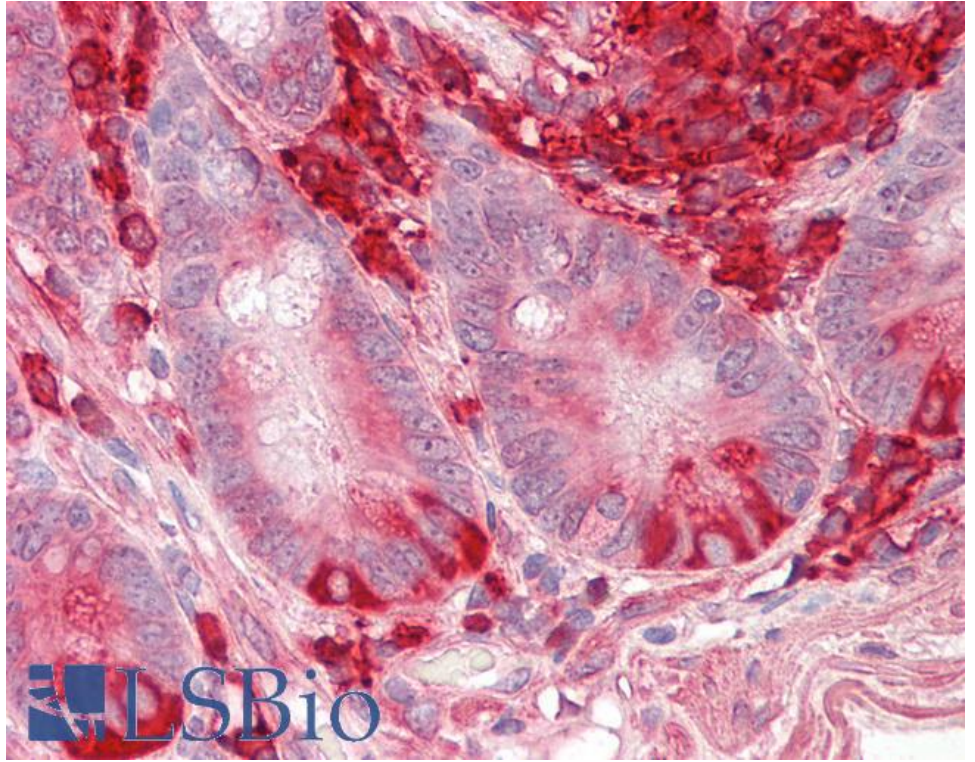
Expected from sequence similarity: Human, Mouse, Cow



EB10879 (0.1µg/ml) staining of Human Lymph Nodes lysate (35µg protein in RIPA buffer). Detected by chemiluminescence.



EB10679 (0.1µg/ml) staining of Mouse Lymph Nodes (A) and Mouse Intestine (B) lysates (35µg protein in RIPA buffer). Detected by chemiluminescence.



EB10879 (3.75µg/ml) staining of paraffin embedded Human Small Intestine. Steamed antigen retrieval with citrate buffer Ph 6, AP-staining.