



SZABO SCANDIC

Part of Europa Biosite

Produktinformation



Forschungsprodukte & Biochemikalien



Zellkultur & Verbrauchsmaterial



Diagnostik & molekulare Diagnostik



Laborgeräte & Service

Weitere Information auf den folgenden Seiten!
See the following pages for more information!



Lieferung & Zahlungsart

siehe unsere [Liefer- und Versandbedingungen](#)

Zuschläge

- Mindermengenzuschlag
- Trockeneiszuschlag
- Gefahrgutzuschlag
- Expressversand

SZABO-SCANDIC HandelsgmbH

Quellenstraße 110, A-1100 Wien

T. +43(0)1 489 3961-0

F. +43(0)1 489 3961-7

mail@szabo-scandic.com

www.szabo-scandic.com

[linkedin.com/company/szaboscandic](https://www.linkedin.com/company/szaboscandic) 



UK Office

Everest Biotech Ltd

Cherwell Innovation Centre
77 Heyford Park
Upper Heyford
Oxfordshire
OX25 5HD
UK

Enquiries:

info@everestbiotech.com

Sales:

sales@everestbiotech.com

Tech support:

support@everestbiotech.com

Tel: +44 (0)1869 238326

Fax: +44 (0)1869 238327

US Office

Everest Biotech c/o Abcore

405 Maple Street, Suite A106
Ramona,
CA 92065
USA

Inquiries:

info@everestbiotech.com

Sales:

usasales@everestbiotech.com

Tech support:

support@everestbiotech.com

Tel: 888-320-4628 (toll-free)

Fax: 888-841-9041

www.everestbiotech.com

**Research Use Only. Not for
diagnostic or therapeutic use.**

EB10888 - Goat Anti-PTCH1 (aa266-280) Antibody

Size: 100µg specific antibody in 200µl



Target Protein

Principal Names: PTCH1, patched 1, BCNS, FLJ26746, FLJ42602, HPE7, NBCCS, PTC, PTC1, PTCH11, OTTHUMP00000021709, OTTHUMP00000021710, PTCH protein +12b, PTCH protein +4', PTCH protein -10, patched homolog 1, protein patched homolog 1

Official Symbol: PTCH1

Accession Number(s): NP_000255.2; NP_001077072.1; NP_001077071.1; NP_001077073.1

Human GeneID(s): [5727](#)

Non-Human GeneID(s): 19206 (mouse), 89830 (rat)

Important Comments: This antibody is expected to recognize all reported isoforms (NP_000255.2; NP_001077072.1; NP_001077071.1; NP_001077073.1). Reported variants represent identical protein: NP_001077075.1, NP_001077074.1, NP_001077073.1, NP_001077076.1

Immunogen

Peptide with sequence C-EELKKINYQVDSWEE, from the internal region of the protein sequence according to NP_000255.2; NP_001077072.1; NP_001077071.1; NP_001077073.1.

Please note the [peptide](#) is available for sale.

Purification and Storage

Purified from goat serum by ammonium sulphate precipitation followed by antigen affinity chromatography using the immunizing peptide.

Supplied at 0.5 mg/ml in Tris saline, 0.02% sodium azide, pH7.3 with 0.5% bovine serum albumin.

Aliquot and store at -20°C. Minimize freezing and thawing.

Applications Tested

Peptide ELISA: antibody detection limit dilution 1:32000.

Western blot: Approx 140kDa band observed in Mouse fetal Kidney lysates (calculated MW of 159kDa according to NP_032983.1). This molecular weight is routinely observed by other sources. Recommended concentration: 1-3µg/ml. Primary incubation was 1 hour.

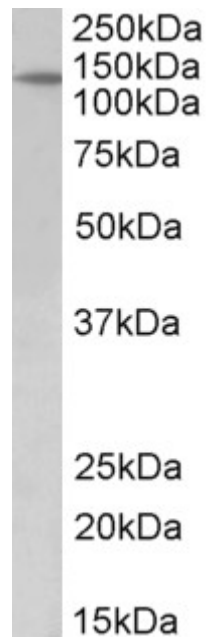
IHC: Paraffin embedded Human Brain (Cortex). Recommended concentration: 8µg/ml.

Immunofluorescence: Strong expression of the protein seen in the cytoplasm of HeLa cells. Recommended concentration: 5µg/ml.

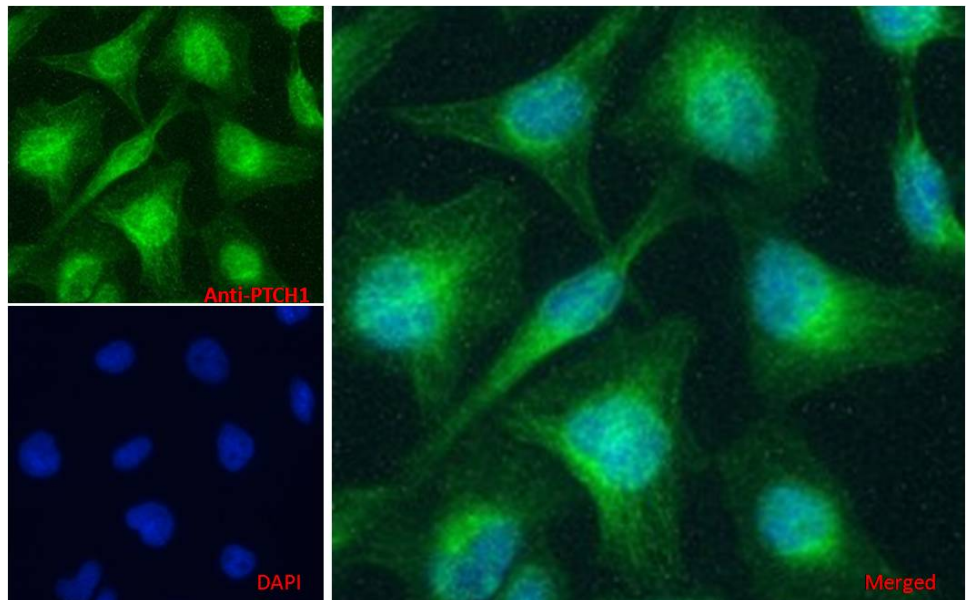
Species Reactivity

Tested: Human, Mouse

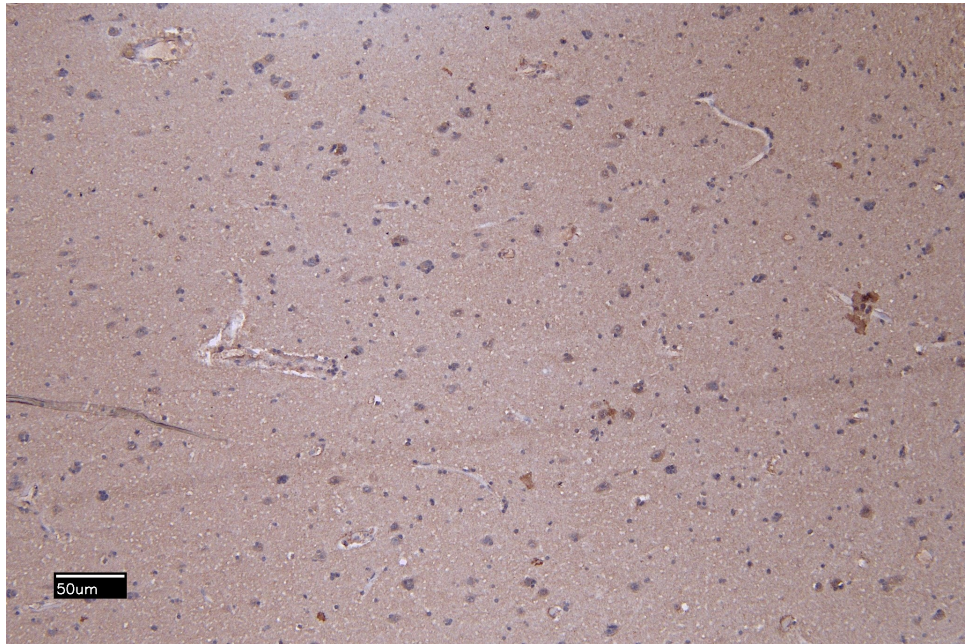
Expected from sequence similarity: Human, Mouse, Rat, Dog, Cow



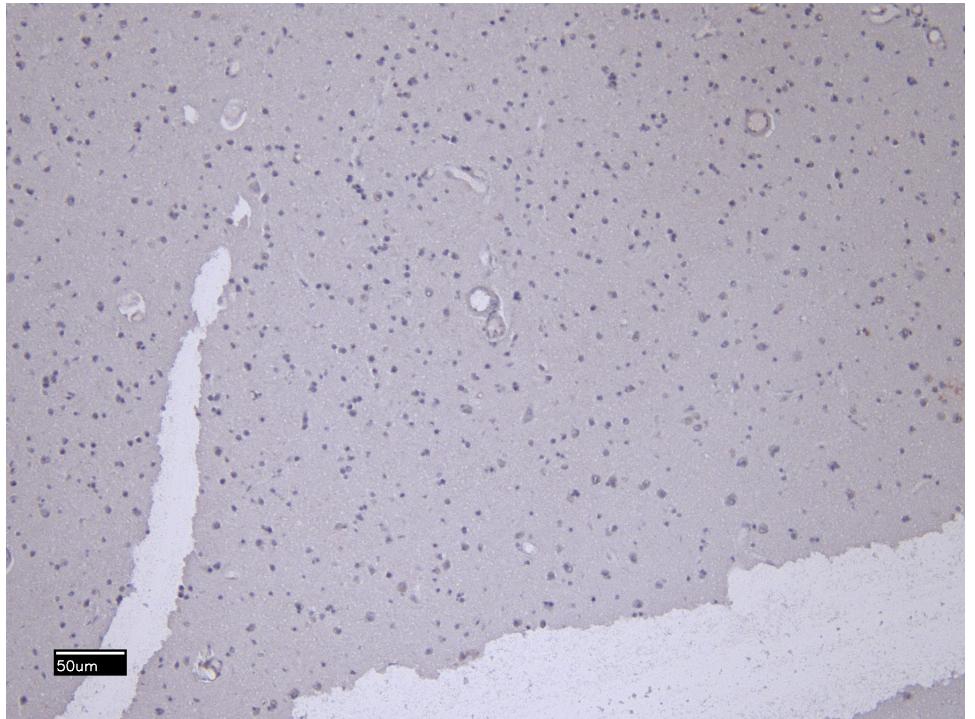
EB10888 (2 μ g/ml) staining of Mouse fetal Kidney lysate (35 μ g protein in RIPA buffer). Detected by chemiluminescence.



EB10888 Immunofluorescence analysis of paraformaldehyde fixed HeLa cells, permeabilized with 0.15% Triton. Primary incubation 1hr (5 μ g/ml) followed by Alexa Fluor 488 secondary antibody (1 μ g/ml), showing cytoplasmic and Golgi apparatus staining. The nuclear stain is DAPI (blue).



EB10888 (8µg/ml) staining of paraffin embedded Human Cortex. Heat induced antigen retrieval with citrate buffer pH 6, HRP-staining.



EB10888 Negative Control showing staining of paraffin embedded Human Cortex, with no primary antibody.