



SZABO SCANDIC

Part of Europa Biosite

Produktinformation



Forschungsprodukte & Biochemikalien



Zellkultur & Verbrauchsmaterial



Diagnostik & molekulare Diagnostik



Laborgeräte & Service

Weitere Information auf den folgenden Seiten!
See the following pages for more information!



Lieferung & Zahlungsart

siehe unsere [Liefer- und Versandbedingungen](#)

Zuschläge

- Mindermengenzuschlag
- Trockeneiszuschlag
- Gefahrgutzuschlag
- Expressversand

SZABO-SCANDIC HandelsgmbH

Quellenstraße 110, A-1100 Wien

T. +43(0)1 489 3961-0

F. +43(0)1 489 3961-7

mail@szabo-scandic.com

www.szabo-scandic.com

[linkedin.com/company/szaboscandic](https://www.linkedin.com/company/szaboscandic)



UK Office

Everest Biotech Ltd

Cherwell Innovation Centre
77 Heyford Park
Upper Heyford
Oxfordshire
OX25 5HD
UK

Enquiries:

info@everestbiotech.com

Sales:

sales@everestbiotech.com

Tech support:

support@everestbiotech.com

Tel: +44 (0)1869 238326

Fax: +44 (0)1869 238327

US Office

Everest Biotech c/o Abcore

405 Maple Street, Suite A106
Ramona,
CA 92065
USA

Inquiries:

info@everestbiotech.com

Sales:

usasales@everestbiotech.com

Tech support:

support@everestbiotech.com

Tel: 888-320-4628 (toll-free)

Fax: 888-841-9041

www.everestbiotech.com

**Research Use Only. Not for
diagnostic or therapeutic use.**

EB10922 - Goat Anti-Itih4 (mouse) Antibody

Size: 100µg specific antibody in 200µl



Target Protein

Principal Names: Itih4, inter-alpha (globulin) inhibitor H4 (plasma Kallikrein-sensitive glycoprotein), H4P, IHRP, ITIHL1, PK120, ITI heavy chain H4, ITI-HC4, OTTMUSP00000032461, PK-120, gp120, inter-alpha-inhibitor heavy chain 4, inter-alpha-trypsin inhibitor family heavy chain-related protein, inter-alpha-trypsin inhibitor heavy chain H4, inter-alpha-trypsin inhibitor, heavy chain-like, 1, inter-alpha-trypsin inhibitor, heavy chain-related protein, plasma kallikrein sensitive glycoprotein 120, plasma kallikrein-sensitive glycoprotein 120

Official Symbol: Itih4

Accession Number(s): NP_061216.2; NP_001152771.1

Non-Human GeneID(s): 16427 (mouse), 54404 (rat)

Important Comments: This antibody is expected to recognize both reported isoforms (NP_002209.2; NP_001159921.1).

Immunogen

Peptide with sequence C-KPEGQEQQVAEKP, from the internal region of the protein sequence according to NP_061216.2; NP_001152771.1.

Please note the [peptide](#) is available for sale.

Purification and Storage

Purified from goat serum by ammonium sulphate precipitation followed by antigen affinity chromatography using the immunizing peptide.

Supplied at 0.5 mg/ml in Tris saline, 0.02% sodium azide, pH7.3 with 0.5% bovine serum albumin.

Aliquot and store at -20°C. Minimize freezing and thawing.

Applications Tested

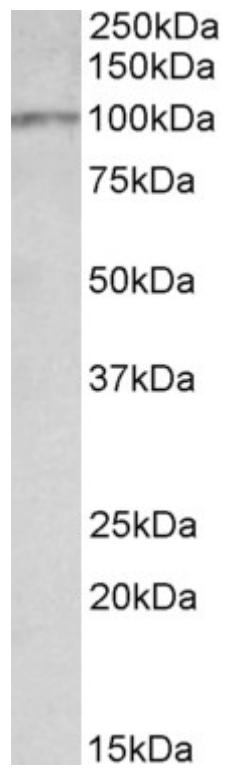
Peptide ELISA: antibody detection limit dilution 1:32000.

Western blot: Approx 100kDa band observed in Rat Liver lysates (calculated MW of 104kDa according to Rat NP_062242.2). Recommended concentration: 0.03-0.1µg/ml.

Species Reactivity

Tested: Rat

Expected from sequence similarity: Mouse, Rat



EB10922 (0.03 μ g/ml) staining of Rat Liver lysate (35 μ g protein in RIPA buffer). Primary incubation was 1 hour.
Detected by chemiluminescence.