



SZABO SCANDIC

Part of Europa Biosite

Produktinformation



Forschungsprodukte & Biochemikalien



Zellkultur & Verbrauchsmaterial



Diagnostik & molekulare Diagnostik



Laborgeräte & Service

Weitere Information auf den folgenden Seiten!
See the following pages for more information!



Lieferung & Zahlungsart

siehe unsere [Liefer- und Versandbedingungen](#)

Zuschläge

- Mindermengenzuschlag
- Trockeneiszuschlag
- Gefahrgutzuschlag
- Expressversand

SZABO-SCANDIC HandelsgmbH

Quellenstraße 110, A-1100 Wien

T. +43(0)1 489 3961-0

F. +43(0)1 489 3961-7

mail@szabo-scandic.com

www.szabo-scandic.com

[linkedin.com/company/szaboscandic](https://www.linkedin.com/company/szaboscandic)



UK Office

Everest Biotech Ltd

Cherwell Innovation Centre
77 Heyford Park
Upper Heyford
Oxfordshire
OX25 5HD
UK

Enquiries:

info@everestbiotech.com

Sales:

sales@everestbiotech.com

Tech support:

support@everestbiotech.com

Tel: +44 (0)1869 238326

Fax: +44 (0)1869 238327

US Office

Everest Biotech c/o Abcore

405 Maple Street, Suite A106
Ramona,
CA 92065
USA

Inquiries:

info@everestbiotech.com

Sales:

usasales@everestbiotech.com

Tech support:

support@everestbiotech.com

Tel: 888-320-4628 (toll-free)

Fax: 888-841-9041

www.everestbiotech.com

**Research Use Only. Not for
diagnostic or therapeutic use.**

EB10948 - Goat Anti-CD56 / NCAM1 (isoform 2) Antibody

Size: 100µg specific antibody in 200µl



Target Protein

Principal Names: NCAM1, neural cell adhesion molecule 1, CD56, MSK39, NCAM, N-CAM-1, NCAM-1, antigen recognized by monoclonal antibody 5.1H11, neural cell adhesion molecule, NCAM

Official Symbol: NCAM1

Accession Number(s): NP_851996.2

Human GeneID(s): [4684](#)

Non-Human GeneID(s): 24586 (rat)

Important Comments: This antibody is expected to recognize reported isoform 2 (NP_851996.2) only.

Immunogen

Peptide with sequence C-KASWTRPEKQETLD, from the internal region of the protein sequence according to NP_851996.2.

Please note the [peptide](#) is available for sale.

Purification and Storage

Purified from goat serum by ammonium sulphate precipitation followed by antigen affinity chromatography using the immunizing peptide.

Supplied at 0.5 mg/ml in Tris saline, 0.02% sodium azide, pH7.3 with 0.5% bovine serum albumin.

Aliquot and store at -20°C. Minimize freezing and thawing.

Applications Tested

Peptide ELISA: antibody detection limit dilution 1:32000.

Western blot: Approx 150-170kDa band observed in Human Cerebellum and Frontal Cortex lysates (calculated MW of 94.6kDa according to NP_851996.2). The observed molecular weight corresponds to the glycosylated form and is routinely observed by other sources. Recommended concentration: 0.03-0.3µg/ml. Primary incubation 1 hour at room temperature.

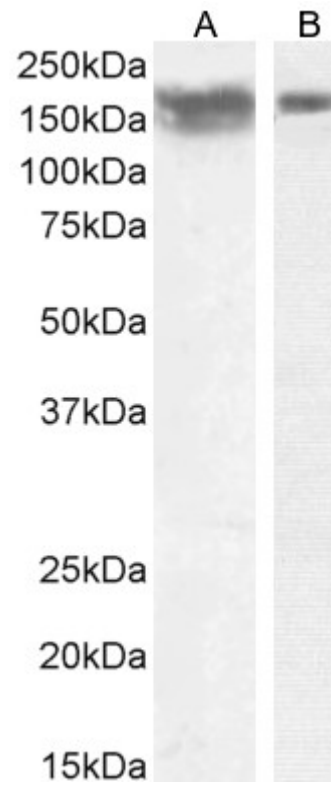
IHC: Paraffin embedded Human Adrenal Gland. Recommended concentration: 5µg/ml.

Flow Cytometry: Flow cytometric analysis of U251 cells. Recommended concentration: 10ug/ml.

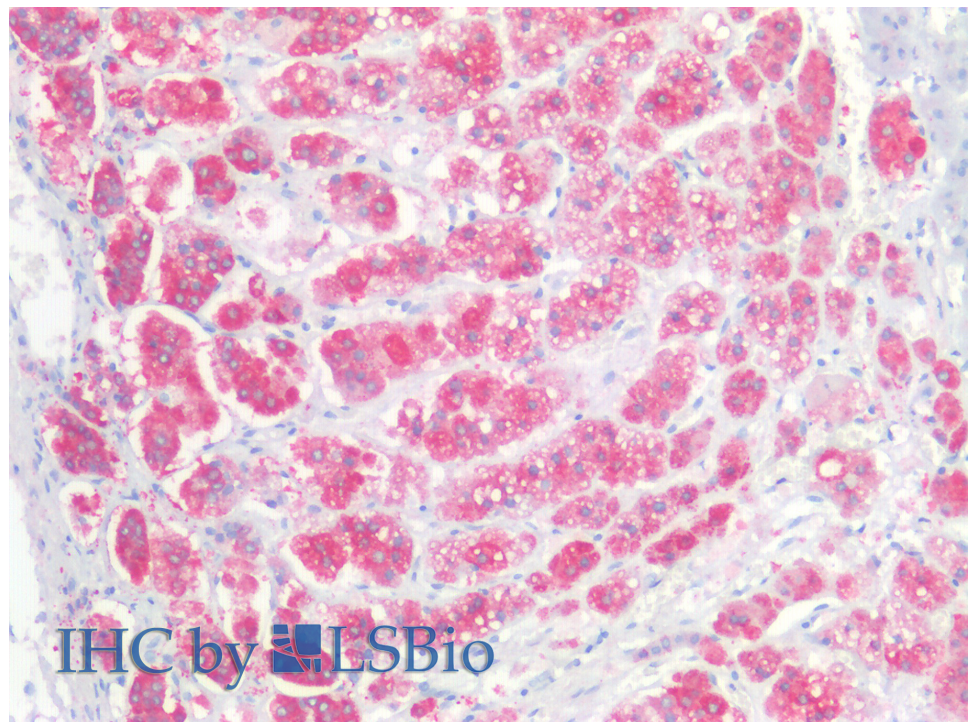
Species Reactivity

Tested: Human

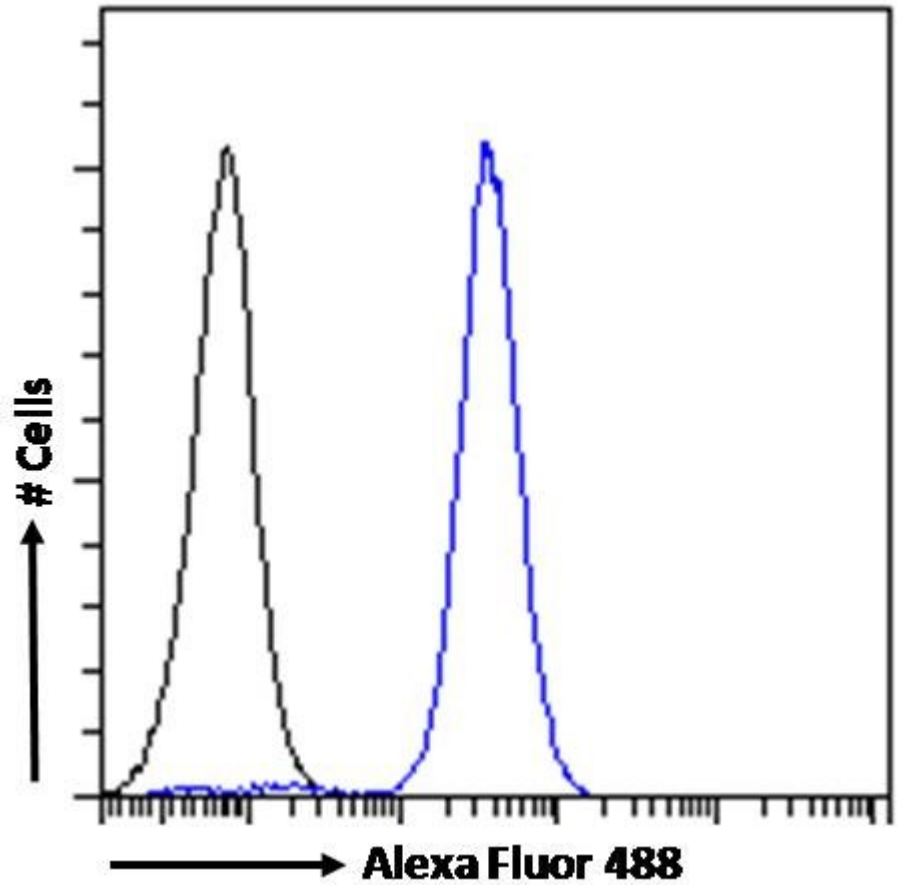
Expected from sequence similarity: Human, Rat, Pig, Cow



EB10948 (0.01 μ g/ml) staining of Human Frontal Cortex (A) and (0.1 μ g/ml) Cerebellum (B) lysate (35 μ g protein in RIPA buffer). Detected by chemiluminescence.



EB10948 (5 μ g/ml) staining of paraffin embedded Human Adrenal Gland. Steamed antigen retrieval with citrate buffer pH 6, AP-staining.



EB10948 Flow cytometric analysis of paraformaldehyde fixed U251 cells (blue line), permeabilized with 0.5% Triton. Primary incubation 1hr (10ug/ml) followed by Alexa Fluor 488 secondary antibody (1ug/ml). IgG control: Unimmunized goat IgG (black line) followed by Alexa Fluor 488 secondary antibody.