



SZABO SCANDIC

Part of Europa Biosite

Produktinformation



Forschungsprodukte & Biochemikalien



Zellkultur & Verbrauchsmaterial



Diagnostik & molekulare Diagnostik



Laborgeräte & Service

Weitere Information auf den folgenden Seiten!
See the following pages for more information!



Lieferung & Zahlungsart

siehe unsere [Liefer- und Versandbedingungen](#)

Zuschläge

- Mindermengenzuschlag
- Trockeneiszuschlag
- Gefahrgutzuschlag
- Expressversand

SZABO-SCANDIC HandelsgmbH

Quellenstraße 110, A-1100 Wien

T. +43(0)1 489 3961-0

F. +43(0)1 489 3961-7

mail@szabo-scandic.com

www.szabo-scandic.com

[linkedin.com/company/szaboscandic](https://www.linkedin.com/company/szaboscandic) 



UK Office

Everest Biotech Ltd

Cherwell Innovation Centre
77 Heyford Park
Upper Heyford
Oxfordshire
OX25 5HD
UK

Enquiries:

info@everestbiotech.com

Sales:

sales@everestbiotech.com

Tech support:

support@everestbiotech.com

Tel: +44 (0)1869 238326

Fax: +44 (0)1869 238327

US Office

Everest Biotech c/o Abcore

405 Maple Street, Suite A106
Ramona,
CA 92065
USA

Inquiries:

info@everestbiotech.com

Sales:

usasales@everestbiotech.com

Tech support:

support@everestbiotech.com

Tel: 888-320-4628 (toll-free)

Fax: 888-841-9041

www.everestbiotech.com

**Research Use Only. Not for
diagnostic or therapeutic use.**

EB10961 - Goat Anti-CB1 (isoform a) Antibody

Size: 100µg specific antibody in 200µl



Target Protein

Principal Names: CNR1, cannabinoid receptor 1 (brain), CANN6, CB-R, CB1, CB1A, CB1K5, CB1R, CNR, cannabinoid receptor 1, central cannabinoid receptor

Official Symbol: CNR1

Accession Number(s): NP_057167.2

Human GeneID(s): [1268](#)

Non-Human GeneID(s): 12801 (mouse), 25248 (rat)

Important Comments: This antibody is expected to recognize reported isoform a (NP_057167.2) only. Reported variants represent identical protein: NP_001153731.1, NP_001153732.1, NP_057167.2, NP_001153730.1, NP_001153698.1

Immunogen

Peptide with sequence SNDIQYEDIKGDMS-C, from the N Terminus of the protein sequence according to NP_057167.2.

Please note the [peptide](#) is available for sale.

Purification and Storage

Purified from goat serum by ammonium sulphate precipitation followed by antigen affinity chromatography using the immunizing peptide.

Supplied at 0.5 mg/ml in Tris saline, 0.02% sodium azide, pH7.3 with 0.5% bovine serum albumin.

Aliquot and store at -20°C. Minimize freezing and thawing.

Applications Tested

Peptide ELISA: antibody detection limit dilution 1:64000.

Western blot: Approx 52kDa band observed in lysates of cell lines A549 and NIH3T3 (calculated MW of 52.9kDa according to Human NP_057167.2 and 52.8kDa according to Mouse NP_031752.1). Recommended concentration: 0.3-1µg/ml. Primary incubation was 1 hour. This antibody has been successfully used in WB on Human: 33049367 and <http://doi.org/10.1089/can.2020.0107>.

Species Reactivity

Tested: Human, Mouse

Expected from sequence similarity: Human, Mouse, Rat, Dog, Cow

Specific References

This antibody has been successfully used in WB on Human:

Melissa L. Kozakiewicz, Jie Zhang, Sandra Leone-Kabler, Liliya M. Yamaleyeva, Anna G. McDonald, Brian C. Brost and Allyn C. Howlett

Differential Expression of CB1 Cannabinoid Receptor and Cannabinoid Receptor Interacting Protein 1a in Labor

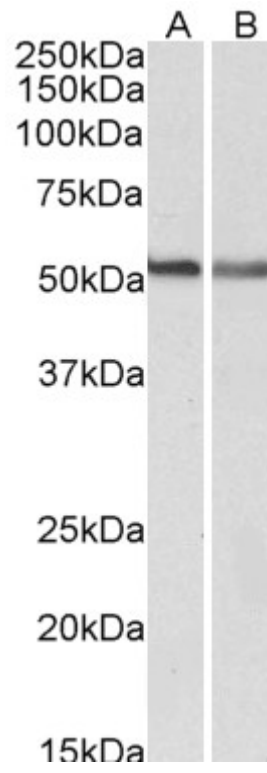
Cannabis and Cannabinoid Research (April 2021) <http://doi.org/10.1089/can.2020.0107>
PMID: 33998898

This antibody has been successfully used in WB on Human:

Erica L Lyons, Sandra Leone-Kabler, Alexander L Kovach, Brian F Thomas, Allyn C Howlett

Cannabinoid receptor subtype influence on neurogenesis in human SH-SY5Y cells
Mol Cell Neurosci. 2020 Oct 10;109:103566.

PMID: 33049367



EB10961 (0.3 μ g/ml) staining of A549 (A) and NIH3T3 (B) lysates (35 μ g protein in RIPA buffer). Detected by chemiluminescence.