



# SZABO SCANDIC

Part of Europa Biosite

## Produktinformation



Forschungsprodukte & Biochemikalien



Zellkultur & Verbrauchsmaterial



Diagnostik & molekulare Diagnostik



Laborgeräte & Service

Weitere Information auf den folgenden Seiten!  
See the following pages for more information!



### Lieferung & Zahlungsart

siehe unsere [Liefer- und Versandbedingungen](#)

### Zuschläge

- Mindermengenzuschlag
- Trockeneiszuschlag
- Gefahrgutzuschlag
- Expressversand

### SZABO-SCANDIC HandelsgmbH

Quellenstraße 110, A-1100 Wien

T. +43(0)1 489 3961-0

F. +43(0)1 489 3961-7

[mail@szabo-scandic.com](mailto:mail@szabo-scandic.com)

[www.szabo-scandic.com](http://www.szabo-scandic.com)

[linkedin.com/company/szaboscandic](https://www.linkedin.com/company/szaboscandic)



## UK Office

### Everest Biotech Ltd

Cherwell Innovation Centre  
77 Heyford Park  
Upper Heyford  
Oxfordshire  
OX25 5HD  
UK

Enquiries:

[info@everestbiotech.com](mailto:info@everestbiotech.com)

Sales:

[sales@everestbiotech.com](mailto:sales@everestbiotech.com)

Tech support:

[support@everestbiotech.com](mailto:support@everestbiotech.com)

Tel: +44 (0)1869 238326

Fax: +44 (0)1869 238327

## US Office

### Everest Biotech c/o Abcore

405 Maple Street, Suite A106  
Ramona,  
CA 92065  
USA

Inquiries:

[info@everestbiotech.com](mailto:info@everestbiotech.com)

Sales:

[usasales@everestbiotech.com](mailto:usasales@everestbiotech.com)

Tech support:

[support@everestbiotech.com](mailto:support@everestbiotech.com)

Tel: 888-320-4628 (toll-free)

Fax: 888-841-9041

[www.everestbiotech.com](http://www.everestbiotech.com)

**Research Use Only. Not for  
diagnostic or therapeutic use.**

## EB10995 - Goat Anti-IDH3A Antibody

Size: 100µg specific antibody in 200µl



### Target Protein

**Principal Names:** IDH3A, isocitrate dehydrogenase 3 (NAD+) alpha, H-IDH alpha, NAD(+)-specific ICDH subunit alpha, NAD(H)-specific isocitrate dehydrogenase alpha subunit, NAD+-specific ICDH, isocitrate dehydrogenase (NAD+) alpha chain, isocitrate dehydrogenase [NAD] subunit alpha, mitochondrial, isocitric dehydrogenase subunit alpha

**Official Symbol:** IDH3A

**Accession Number(s):** NP\_005521.1

**Human GeneID(s):** [3419](#)

**Non-Human GeneID(s):** 67834 (mouse), 114096 (rat)

### Immunogen

Peptide with sequence DFTEEICRRVKDLD, from the C Terminus of the protein sequence according to NP\_005521.1.

Please note the [peptide](#) is available for sale.

### Purification and Storage

Purified from goat serum by ammonium sulphate precipitation followed by antigen affinity chromatography using the immunizing peptide.

Supplied at 0.5 mg/ml in Tris saline, 0.02% sodium azide, pH7.3 with 0.5% bovine serum albumin.

Aliquot and store at -20°C. Minimize freezing and thawing.

### Applications Tested

**Peptide ELISA:** antibody detection limit dilution 1:32000.

**Western blot:** Approx 37kDa band observed in lysates of Human Lymph Nodes, and of cell line DAUDI, and 38kDa in Human, Mouse and Rat Spleen lysates and in Pig Spleen and Skeletal Muscle lysates (calculated MW of 39.6kDa according to NP\_005521.1).

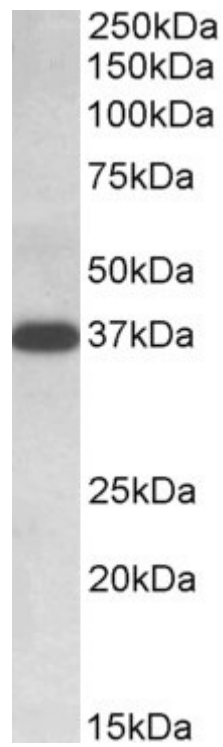
Recommended concentration: 0.1-0.3µg/ml. Primary incubation was 1 hour.

**IHC:** Paraffin embedded Human Thymus. Recommended concentration: 3.75µg/ml.

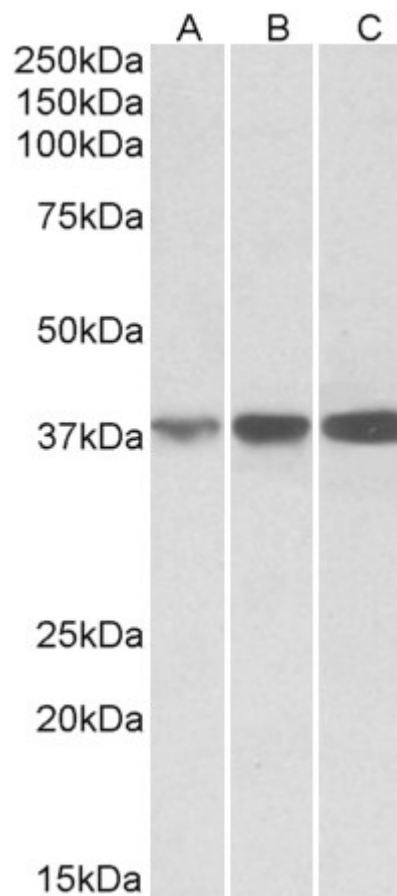
### Species Reactivity

**Tested:** Human, Mouse, Rat, Pig

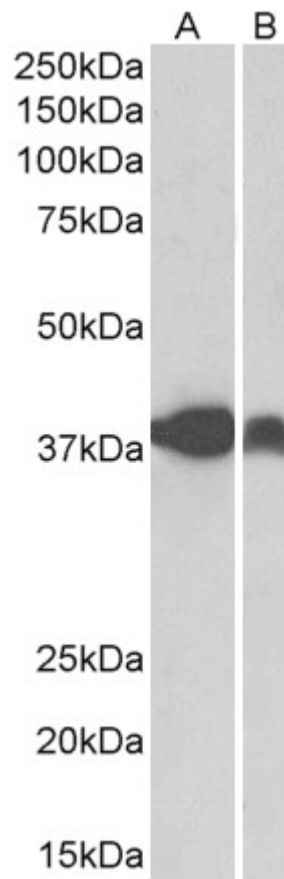
**Expected from sequence similarity:** Human, Mouse, Rat, Dog, Pig, Cow



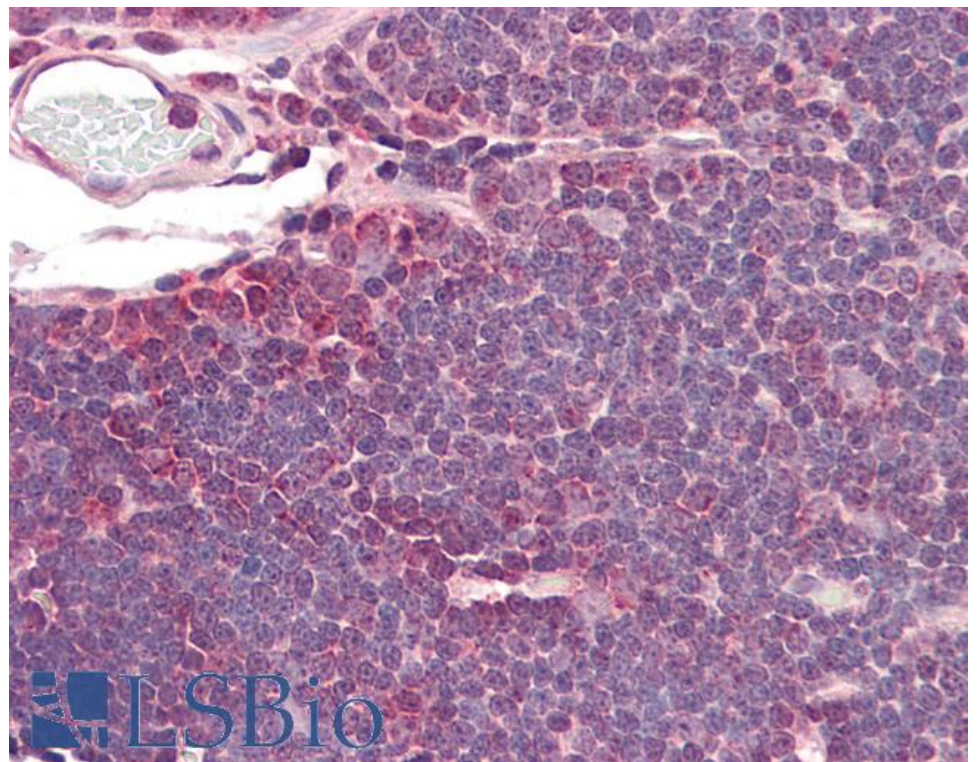
EB10995 (0.1µg/ml) staining of Human Lymph Nodes lysate (35µg protein in RIPA buffer). Detected by chemiluminescence.



EB10995 (0.1µg/ml) staining of Human (A), Mouse (B) and Rat (C) Spleen lysates (35µg protein in RIPA buffer). Detected by chemiluminescence.



EB10995 (0.3 $\mu$ g/ml) staining of Pig Spleen (A) and Pig Skeletal Muscle (B) lysates (35 $\mu$ g protein in RIPA buffer). Detected by chemiluminescence.



EB10995 (3.75 $\mu$ g/ml) staining of paraffin embedded Human Thymus. Steamed antigen retrieval with citrate buffer pH 6, AP-staining.