



SZABO SCANDIC

Part of Europa Biosite

Produktinformation



Forschungsprodukte & Biochemikalien



Zellkultur & Verbrauchsmaterial



Diagnostik & molekulare Diagnostik



Laborgeräte & Service

Weitere Information auf den folgenden Seiten!
See the following pages for more information!



Lieferung & Zahlungsart

siehe unsere [Liefer- und Versandbedingungen](#)

Zuschläge

- Mindermengenzuschlag
- Trockeneiszuschlag
- Gefahrgutzuschlag
- Expressversand

SZABO-SCANDIC HandelsgmbH

Quellenstraße 110, A-1100 Wien

T. +43(0)1 489 3961-0

F. +43(0)1 489 3961-7

mail@szabo-scandic.com

www.szabo-scandic.com

[linkedin.com/company/szaboscandic](https://www.linkedin.com/company/szaboscandic)



UK Office

Everest Biotech Ltd

Cherwell Innovation Centre
77 Heyford Park
Upper Heyford
Oxfordshire
OX25 5HD
UK

Enquiries:

info@everestbiotech.com

Sales:

sales@everestbiotech.com

Tech support:

support@everestbiotech.com

Tel: +44 (0)1869 238326

Fax: +44 (0)1869 238327

US Office

Everest Biotech c/o Abcore

405 Maple Street, Suite A106
Ramona,
CA 92065
USA

Inquiries:

info@everestbiotech.com

Sales:

usasales@everestbiotech.com

Tech support:

support@everestbiotech.com

Tel: 888-320-4628 (toll-free)

Fax: 888-841-9041

www.everestbiotech.com

**Research Use Only. Not for
diagnostic or therapeutic use.**

EB11000 - Goat Anti-IDH3G (aa337-350) Antibody

Size: 100µg specific antibody in 200µl



Target Protein

Principal Names: IDH3G, isocitrate dehydrogenase 3 (NAD+) gamma, H-IDHG, IDH-gamma, NAD (H)-specific isocitrate dehydrogenase gamma subunit, NAD(+)-specific ICDH subunit gamma, NAD+-specific ICDH, OTTHUMP00000025984, OTTHUMP00000025987, OTTHUMP00000025988, isocitrate dehydrogenase [NAD] subunit gamma, mitochondrial, isocitrate dehydrogenase, NAD(+)-specific, mitochondrial, gamma subunit, isocitric dehydrogenase subunit gamma

Official Symbol: IDH3G

Accession Number(s): NP_004126.1; NP_777358.1

Human GeneID(s): [3421](#)

Non-Human GeneID(s): 15929 (mouse), 25179 (rat)

Important Comments: This antibody is expected to recognize both reported isoforms (NP_004126.1; NP_777358.1).

Immunogen

Peptide with sequence C-DHLKLHSYATSIRK, from the internal region of the protein sequence according to NP_004126.1; NP_777358.1.

Please note the [peptide](#) is available for sale.

Purification and Storage

Purified from goat serum by ammonium sulphate precipitation followed by antigen affinity chromatography using the immunizing peptide.

Supplied at 0.5 mg/ml in Tris saline, 0.02% sodium azide, pH7.3 with 0.5% bovine serum albumin.

Aliquot and store at -20°C. Minimize freezing and thawing.

Applications Tested

Peptide ELISA: antibody detection limit dilution 1:16000.

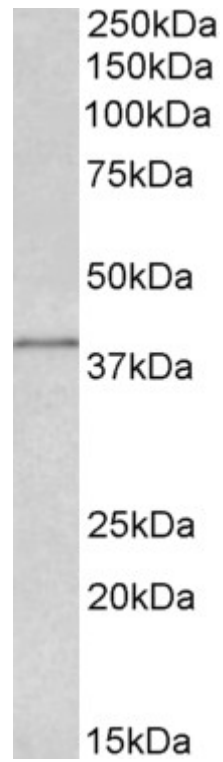
Western blot: Approx 38kDa band observed in lysates of cell line MCF7 and of Rat and Pig Heart (calculated MW of 41.5kDa according to NP_777358.1). Recommended concentration: 0.5-2µg/ml.

IHC: Paraffin embedded Human Kidney. Recommended concentration: 5µg/ml.

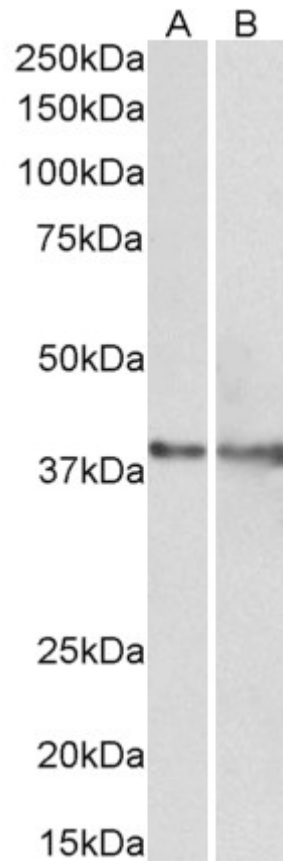
Species Reactivity

Tested: Human, Rat, Pig

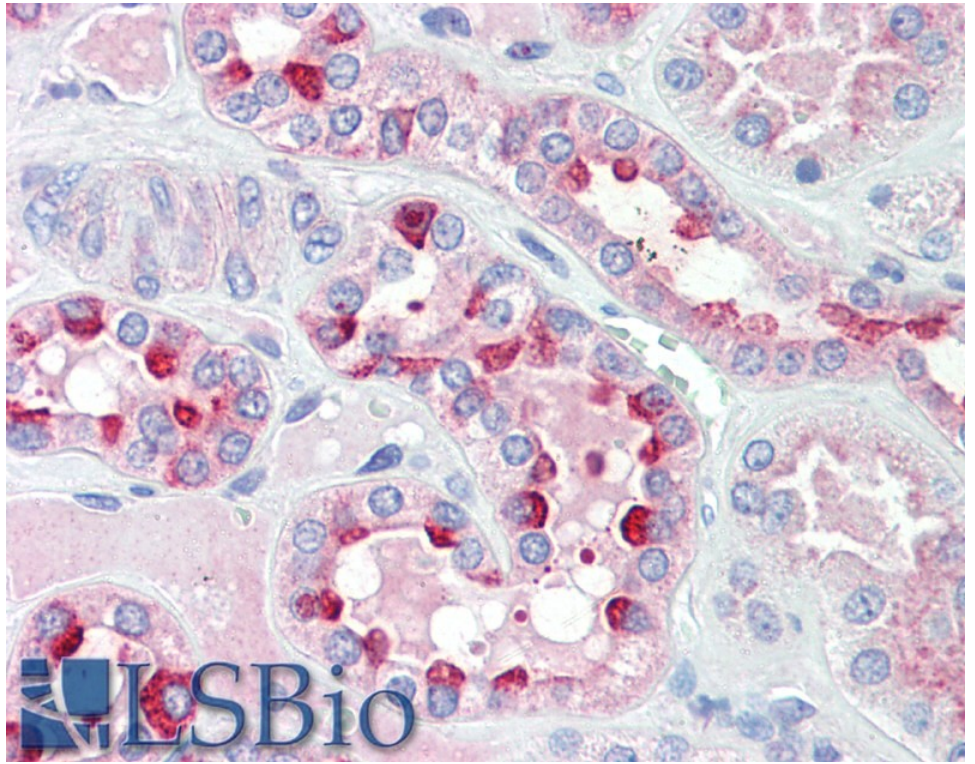
Expected from sequence similarity: Human, Mouse, Rat, Dog, Pig, Cow



EB11000 (0.5 μ g/ml) staining of MCF7 lysate (35 μ g protein in RIPA buffer). Primary incubation was 1 hour. Detected by chemiluminescence.



EB11000 (1 μ g/ml) staining of Rat (A) and Pig (B) Heart lysate (35 μ g protein in RIPA buffer). Primary incubation was 1 hour. Detected by chemiluminescence.



EB11000 (5µg/ml) staining of paraffin embedded Human Kidney. Steamed antigen retrieval with citrate buffer pH 6, AP-staining.