



SZABO SCANDIC

Part of Europa Biosite

Produktinformation



Forschungsprodukte & Biochemikalien



Zellkultur & Verbrauchsmaterial



Diagnostik & molekulare Diagnostik



Laborgeräte & Service

Weitere Information auf den folgenden Seiten!
See the following pages for more information!



Lieferung & Zahlungsart

siehe unsere [Liefer- und Versandbedingungen](#)

Zuschläge

- Mindermengenzuschlag
- Trockeneiszuschlag
- Gefahrgutzuschlag
- Expressversand

SZABO-SCANDIC HandelsgmbH

Quellenstraße 110, A-1100 Wien

T. +43(0)1 489 3961-0

F. +43(0)1 489 3961-7

mail@szabo-scandic.com

www.szabo-scandic.com

[linkedin.com/company/szaboscandic](https://www.linkedin.com/company/szaboscandic) 



UK Office

Everest Biotech Ltd

Cherwell Innovation Centre
77 Heyford Park
Upper Heyford
Oxfordshire
OX25 5HD
UK

Enquiries:

info@everestbiotech.com

Sales:

sales@everestbiotech.com

Tech support:

support@everestbiotech.com

Tel: +44 (0)1869 238326

Fax: +44 (0)1869 238327

US Office

Everest Biotech c/o Abcore

405 Maple Street, Suite A106
Ramona,
CA 92065
USA

Inquiries:

info@everestbiotech.com

Sales:

usasales@everestbiotech.com

Tech support:

support@everestbiotech.com

Tel: 888-320-4628 (toll-free)

Fax: 888-841-9041

www.everestbiotech.com

**Research Use Only. Not for
diagnostic or therapeutic use.**

EB11006 - Goat Anti-Htr1a (mouse) Antibody

Size: 100µg specific antibody in 200µl



Target Protein

Principal Names: Htr1a, 5-hydroxytryptamine (serotonin) receptor 1A, Gpcr18, 5-HT-1A, 5-HT1A receptor, 5-hydroxytryptamine receptor 1A, G-protein coupled receptor 18, serotonin receptor 1A, 5-HT-1A, 5-HT1A receptor, 5-hydroxytryptamine (serotonin) receptor 1A, 5-hydroxytryptamine receptor 1A, Gpcr18, G-protein coupled receptor 18, serotonin receptor 1A, Htr1a

Official Symbol: Htr1a

Accession Number(s): NP_032334.2

Human GeneID(s): [3350](#)

Non-Human GeneID(s): 15550 (mouse), 24473 (rat)

Immunogen

Peptide with sequence C-ERKNERTAEAKRK, from the internal region of the protein sequence according to NP_032334.2.

Please note the [peptide](#) is available for sale.

Purification and Storage

Purified from goat serum by ammonium sulphate precipitation followed by antigen affinity chromatography using the immunizing peptide.

Supplied at 0.5 mg/ml in Tris saline, 0.02% sodium azide, pH7.3 with 0.5% bovine serum albumin.

Aliquot and store at -20°C. Minimize freezing and thawing.

Applications Tested

Peptide ELISA: antibody detection limit dilution 1:128000.

Western blot: Approx 45kDa band observed in Mouse Brain lysates (calculated MW of 46.2kDa according to Mouse NP_032334.2). Recommended concentration: 1-3µg/ml. Additional bands of 75 and 18kDa of unknown identity were consistently observed. These bands were successfully blocked by incubation with the immunizing peptide. Primary incubation was 1 hour. Preliminary testing was unsuccessful on Rat Brain for this particular batch.

Species Reactivity

Tested: Human, Mouse

Expected from sequence similarity: Human, Mouse, Rat

Specific Reference

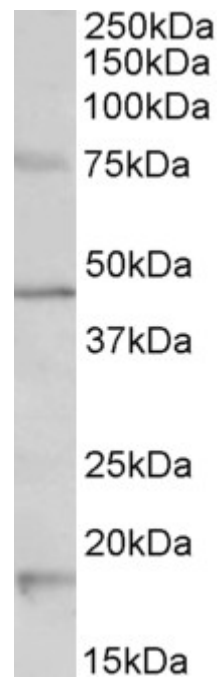
This antibody has been successfully used in Western blot on Human:

Cordeaux Y, Pasupathy D, Bacon J, Charnock-Jones DS, Smith GC.

Characterization of serotonin receptors in pregnant human myometrium.

J Pharmacol Exp Ther. 2009 Mar;328(3):682-91.

PMID: 19075042



EB11006 (1 μ g/ml) staining of Mouse Brain lysate (35 μ g protein in RIPA buffer). Detected by chemiluminescence.