



SZABO SCANDIC

Part of Europa Biosite

Produktinformation



Forschungsprodukte & Biochemikalien



Zellkultur & Verbrauchsmaterial



Diagnostik & molekulare Diagnostik



Laborgeräte & Service

Weitere Information auf den folgenden Seiten!
See the following pages for more information!



Lieferung & Zahlungsart

siehe unsere [Liefer- und Versandbedingungen](#)

Zuschläge

- Mindermengenzuschlag
- Trockeneiszuschlag
- Gefahrgutzuschlag
- Expressversand

SZABO-SCANDIC HandelsgmbH

Quellenstraße 110, A-1100 Wien

T. +43(0)1 489 3961-0

F. +43(0)1 489 3961-7

mail@szabo-scandic.com

www.szabo-scandic.com

[linkedin.com/company/szaboscandic](https://www.linkedin.com/company/szaboscandic) 



UK Office

Everest Biotech Ltd

Cherwell Innovation Centre
77 Heyford Park
Upper Heyford
Oxfordshire
OX25 5HD
UK

Enquiries:

info@everestbiotech.com

Sales:

sales@everestbiotech.com

Tech support:

support@everestbiotech.com

Tel: +44 (0)1869 238326

Fax: +44 (0)1869 238327

US Office

Everest Biotech c/o Abcore

405 Maple Street, Suite A106
Ramona,
CA 92065
USA

Inquiries:

info@everestbiotech.com

Sales:

usasales@everestbiotech.com

Tech support:

support@everestbiotech.com

Tel: 888-320-4628 (toll-free)

Fax: 888-841-9041

www.everestbiotech.com

**Research Use Only. Not for
diagnostic or therapeutic use.**

EB11042 - Goat Anti-NRF2 (aa445-458) Antibody

Size: 100µg specific antibody in 200µl



Target Protein

Principal Names: NFE2L2, nuclear factor (erythroid-derived 2)-like 2, NRF2, HEBP1, NF-E2-related factor 2, NFE2-related factor 2, OTTHUMP00000205251, OTTHUMP00000207980, nuclear factor erythroid 2-related factor 2, HEBP1, NFE2-related factor 2, NF-E2-related factor 2, NRF2, nuclear factor (erythroid-derived 2)-like 2, nuclear factor erythroid 2-related factor 2, nuclear factor, erythroid derived 2, like 2, OTTHUMP00000205251, OTTHUMP00000207980, NFE2L2

Official Symbol: NFE2L2

Accession Number(s): NP_006155.2; NP_001138884.1; NP_001138885.1; NP_001300831.1;

Human GeneID(s): [4780](#)

Non-Human GeneID(s): 18024 (mouse), 83619 (rat)

Important Comments: This antibody is expected to recognize all reported isoforms (

Immunogen

Peptide with sequence C-KHSSRLEAHLTRDE, from the internal region of the protein sequence according to NP_006155.2; NP_001138884.1; NP_001138885.1; NP_001300831.1;.

Please note the [peptide](#) is available for sale.

Purification and Storage

Purified from goat serum by ammonium sulphate precipitation followed by antigen affinity chromatography using the immunizing peptide.

Supplied at 0.5 mg/ml in Tris saline, 0.02% sodium azide, pH7.3 with 0.5% bovine serum albumin.

Aliquot and store at -20°C. Minimize freezing and thawing.

Applications Tested

Peptide ELISA: antibody detection limit dilution 1:64000.

Western blot: Approx 70kDa band observed in Human Lung lysates and approx 75kDa in preliminary testing of Mouse and Rat Liver and KNRK, MDCK, and nuclear NIH3T3 cell lysate (calculated MW of 67.8kDa according to NP_006155.2). This molecular weight rate is routinely observed by other sources. Recommended concentration: 0.3-1µg/ml. Primary incubation 1 hour at room temperature.

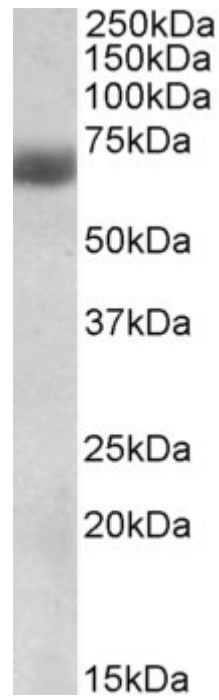
Immunofluorescence: Strong expression of the protein seen in the cytoplasm and nuclei of U2OS and HeLa cells. Recommended concentration: 10µg/ml.

Flow Cytometry: Flow cytometric analysis of HeLa cells. Recommended concentration: 10ug/ml.

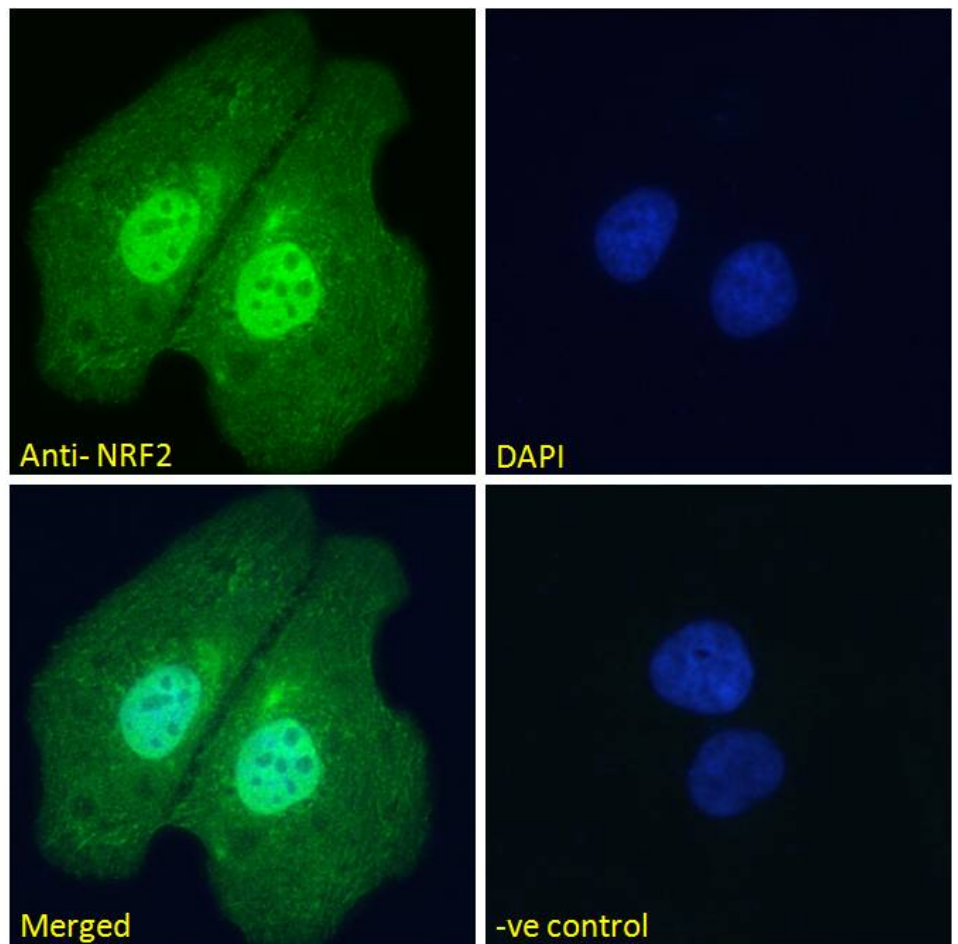
Species Reactivity

Tested: Human

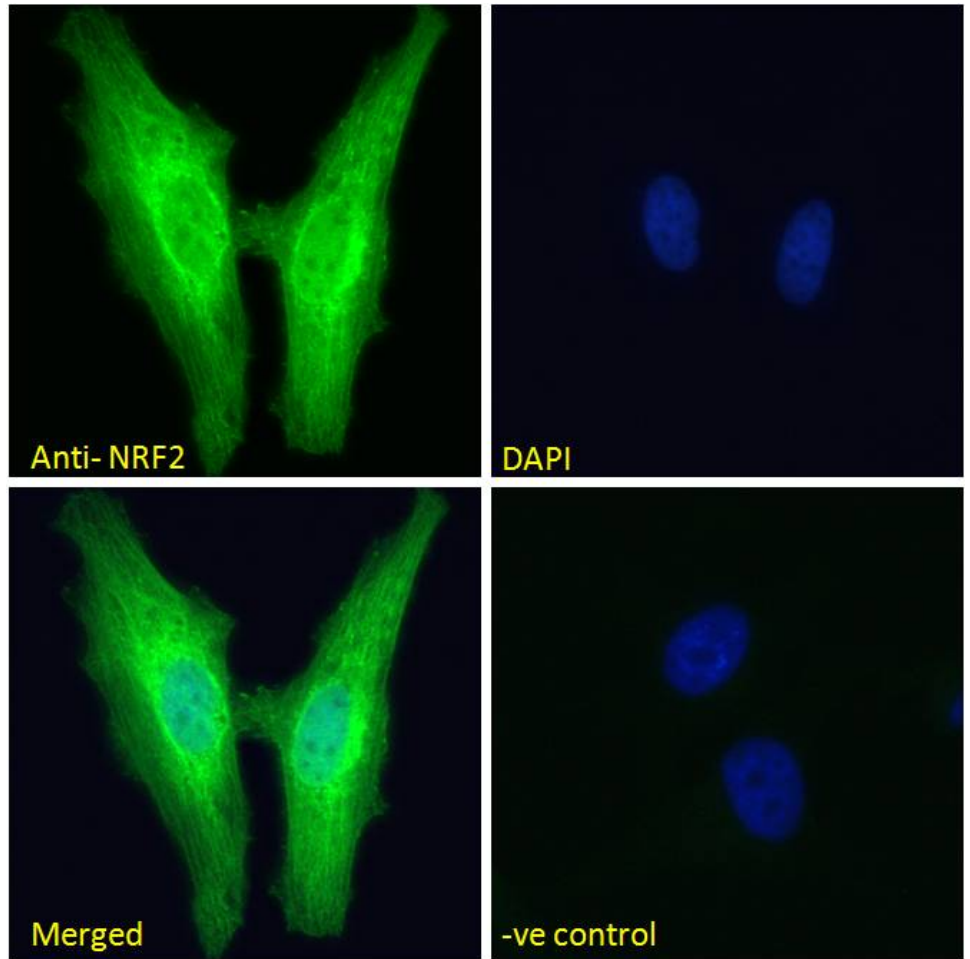
Expected from sequence similarity: Human, Mouse, Rat, Dog, Pig, Cow



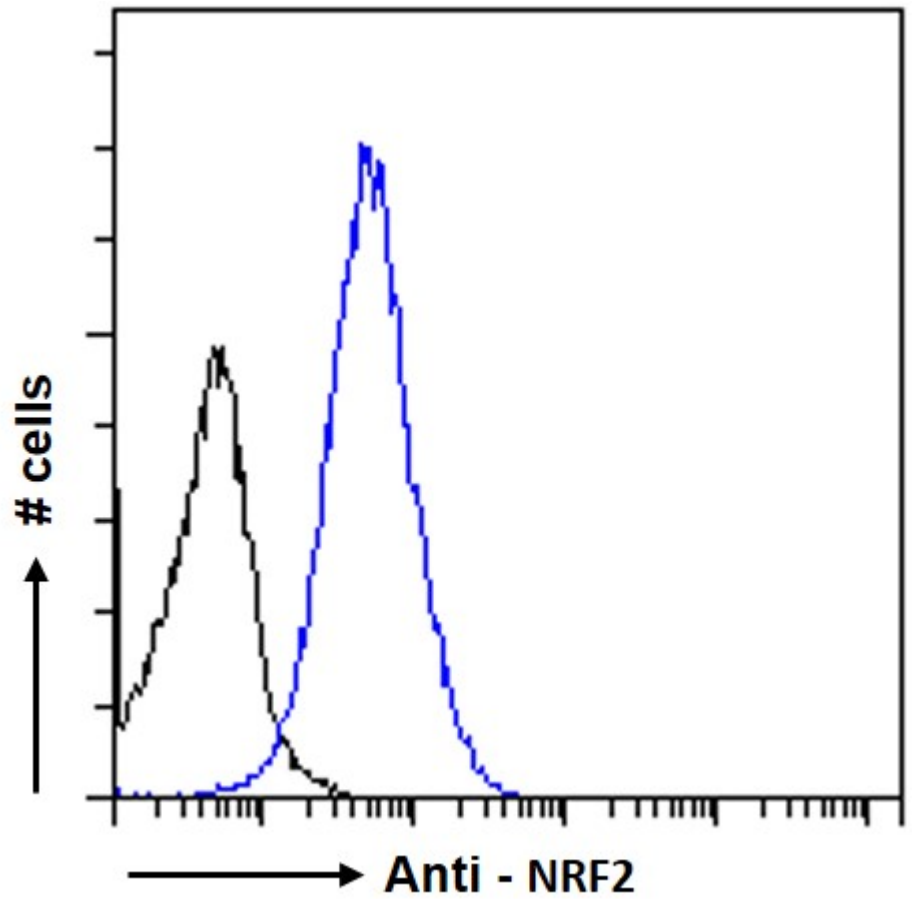
EB11042 (0.3 μ g/ml) staining of Human Lung lysate (35 μ g protein in RIPA buffer). Detected by chemiluminescence.



EB11042 Immunofluorescence analysis of paraformaldehyde fixed U2OS cells, permeabilized with 0.15% Triton. Primary incubation 1hr (10 μ g/ml) followed by Alexa Fluor 488 secondary antibody (2 μ g/ml), showing nuclear and cytoplasmic staining. The nuclear stain is DAPI (blue). Negative control: Unimmunized goat IgG (10 μ g/ml) followed by Alexa Fluor 488 secondary antibody (2 μ g/ml).



EB11042 Immunofluorescence analysis of paraformaldehyde fixed HeLa cells, permeabilized with 0.15% Triton. Primary incubation 1hr (10ug/ml) followed by Alexa Fluor 488 secondary antibody (2ug/ml), showing cytoplasmic and nuclear staining. The nuclear stain is DAPI (blue). Negative control: Unimmunized goat IgG (10ug/ml) followed by Alexa Fluor 488 secondary antibody (2ug/ml).



EB11042 Flow cytometric analysis of paraformaldehyde fixed HeLa cells (blue line), permeabilized with 0.5% Triton. Primary incubation 1hr (10ug/ml) followed by Alexa Fluor 488 secondary antibody (1ug/ml). IgG control: Unimmunized goat IgG (black line) followed by Alexa Fluor 488 secondary antibody.