



SZABO SCANDIC

Part of Europa Biosite

Produktinformation



Forschungsprodukte & Biochemikalien



Zellkultur & Verbrauchsmaterial



Diagnostik & molekulare Diagnostik



Laborgeräte & Service

Weitere Information auf den folgenden Seiten!
See the following pages for more information!



Lieferung & Zahlungsart

siehe unsere [Liefer- und Versandbedingungen](#)

Zuschläge

- Mindermengenzuschlag
- Trockeneiszuschlag
- Gefahrgutzuschlag
- Expressversand

SZABO-SCANDIC HandelsgmbH

Quellenstraße 110, A-1100 Wien

T. +43(0)1 489 3961-0

F. +43(0)1 489 3961-7

mail@szabo-scandic.com

www.szabo-scandic.com

[linkedin.com/company/szaboscandic](https://www.linkedin.com/company/szaboscandic) 



UK Office

Everest Biotech Ltd

Cherwell Innovation Centre
77 Heyford Park
Upper Heyford
Oxfordshire
OX25 5HD
UK

Enquiries:

info@everestbiotech.com

Sales:

sales@everestbiotech.com

Tech support:

support@everestbiotech.com

Tel: +44 (0)1869 238326

Fax: +44 (0)1869 238327

US Office

Everest Biotech c/o Abcore

405 Maple Street, Suite A106
Ramona,
CA 92065
USA

Inquiries:

info@everestbiotech.com

Sales:

usasales@everestbiotech.com

Tech support:

support@everestbiotech.com

Tel: 888-320-4628 (toll-free)

Fax: 888-841-9041

www.everestbiotech.com

**Research Use Only. Not for
diagnostic or therapeutic use.**

EB11045 - Goat Anti-Fgf23 (mouse) Antibody

Size: 100µg specific antibody in 200µl



Target Protein

Principal Names: ADHR, FGF-23, fibroblast growth factor 23, HPDR2, HYPF, phosphatonin, PHPTC, tumor-derived hypophosphatemia inducing factor, tumor-derived hypophosphatemia-inducing factor, Fgf23

Official Symbol: Fgf23

Accession Number(s): NP_073148.1

Non-Human GeneID(s): 64654 (mouse), 170583 (rat)

Immunogen

Peptide with sequence C-ENGYDVYLSQKHH, from the internal region of the protein sequence according to NP_073148.1.

Please note the [peptide](#) is available for sale.

Purification and Storage

Purified from goat serum by ammonium sulphate precipitation followed by antigen affinity chromatography using the immunizing peptide.

Supplied at 0.5 mg/ml in Tris saline, 0.02% sodium azide, pH7.3 with 0.5% bovine serum albumin.

Aliquot and store at -20°C. Minimize freezing and thawing.

Applications Tested

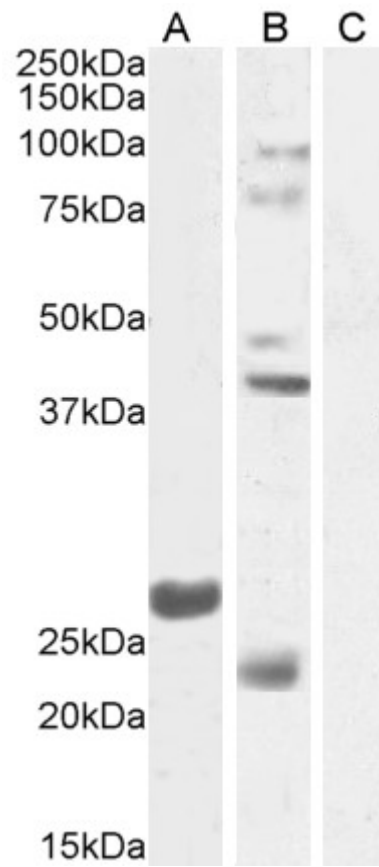
Peptide ELISA: antibody detection limit dilution 1:128000.

Western blot: Approx 27kDa band observed in Mouse Testis lysates (calculated MW of 27.7kDa according to NP_073148.1). Some lysates showed prominent bands at approx. 24+38kDa which were successfully blocked by incubation with the immunizing peptide and have been reported in the literature (Garringer et al., 2008, PMID:18682534).
Recommended concentration: 0.3-1µg/ml. Primary incubation 1 hour at room temperature.

Species Reactivity

Tested: Mouse

Expected from sequence similarity: Mouse, Rat



EB11045 (1 μ g/ml) staining of Mouse Testes lysate 1 (A) and Testes lysate 2 (B) + peptide (C) (35 μ g protein in RIPA buffer). Detected by chemiluminescence.